

Subaru Users' Meeting
17th June 2026, NAOJ

TAC Report

Takayuki Muto

(Subaru TAC14 Chair / Kogakuin University)

TAC14 Members

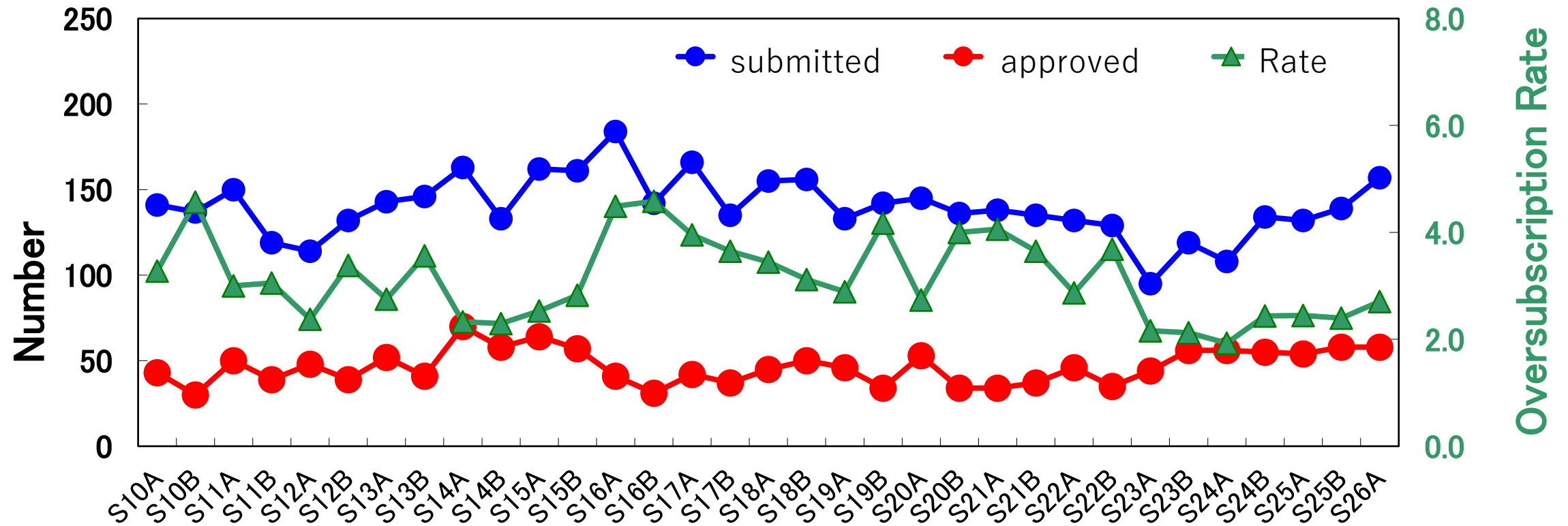
- TAC14: August 2025 (S26A) – July 2027 (S27B)
 - Takafumi Otsubo (University of Occupational and Environmental Health)
 - Yui Kawashima (Kyoto University)
 - Takafumi Kamizuka (University of Tokyo)
 - Takashi Moriya (NAOJ)
 - Kimihiko Nakajima (Kanazawa University)
 - Yuichi Harikane (University of Tokyo)
 - Hironao Miyatake (Nagoya University)
 - Kohei Ichikawa (Tohoku University)
 - Miho Ishigaki (NAOJ)
 - Takayuki Muto (Chair; Kogakuin University)
 - Teruyuki Hirano (ABC)

S26A Summary

- Submitted proposals: 157
 - including 2 intensive program
- Approved proposals: 58
 - Including 1 intensive program approved as a normal program
- Oversubscription rate: **2.7**
- Night requested: 444.92 n.
- Night approved: 107.93 n.
 - New intensive: 0 n.
 - Continuing intensive: 14.8 n.
- Oversubscription rate: **4.1**

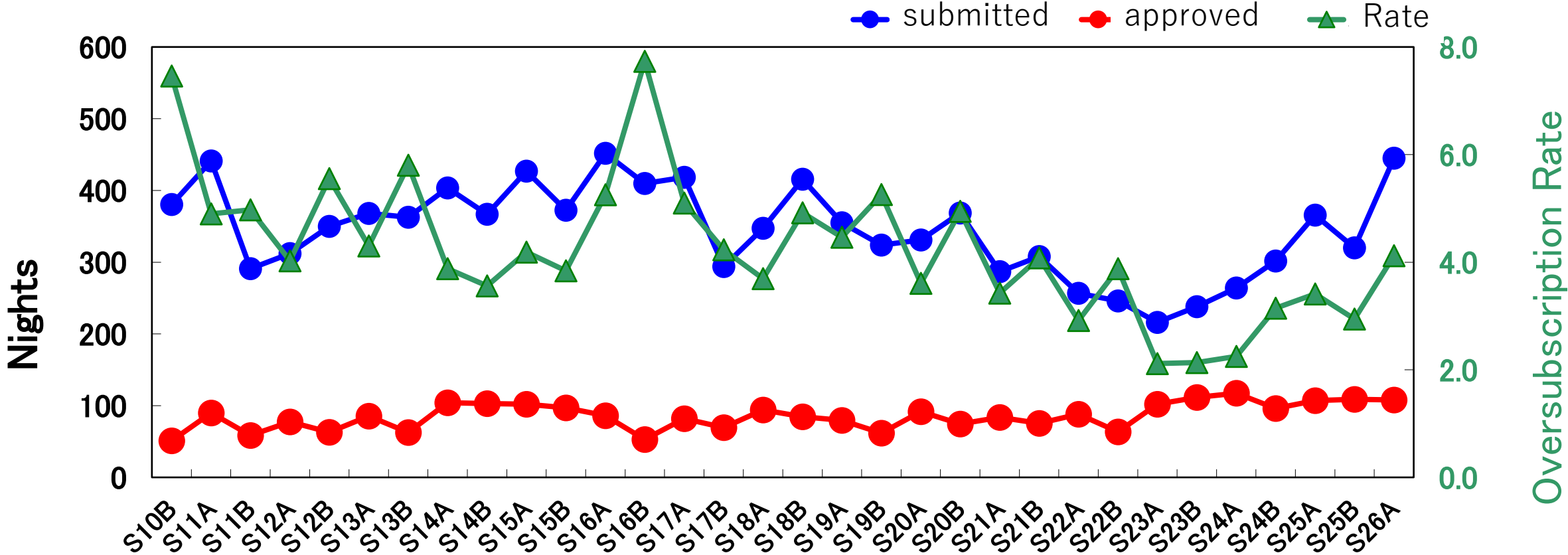
Proposal-Based Acceptance Rate

Submitted and Accepted Proposals S10A–S26A



Night-Based Acceptance Rate

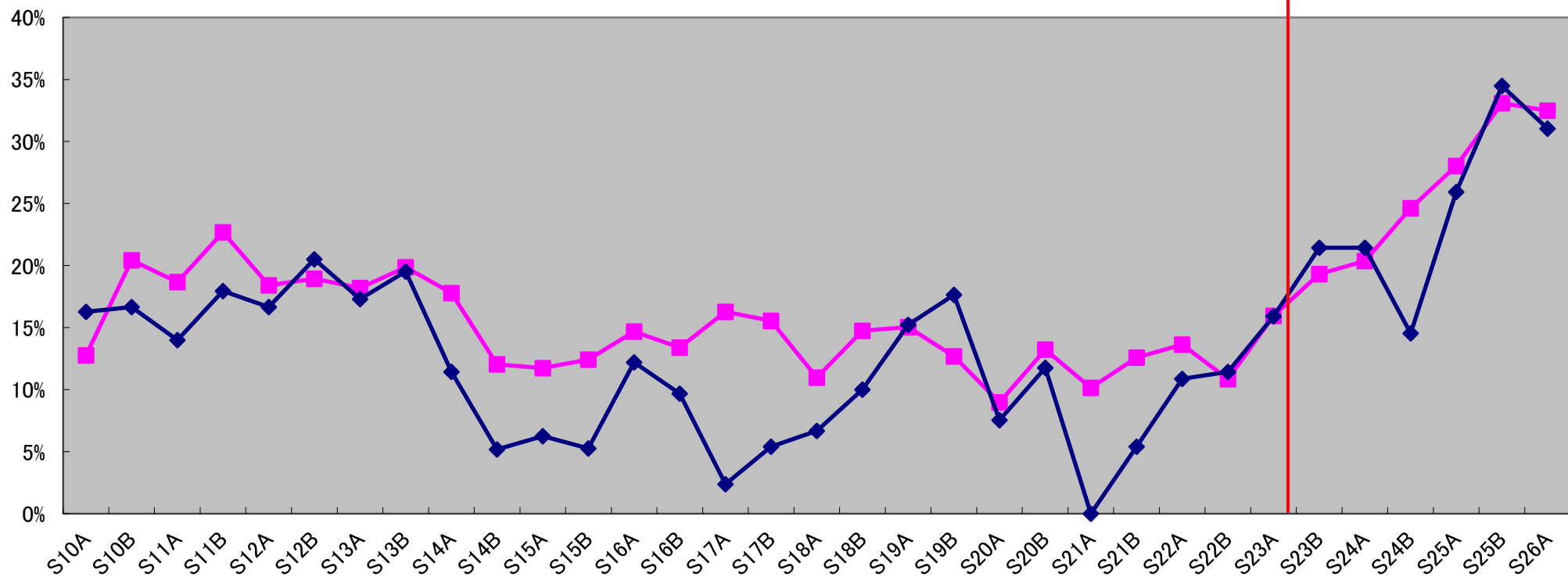
Submitted and Accepted Proposals S10A–S26A



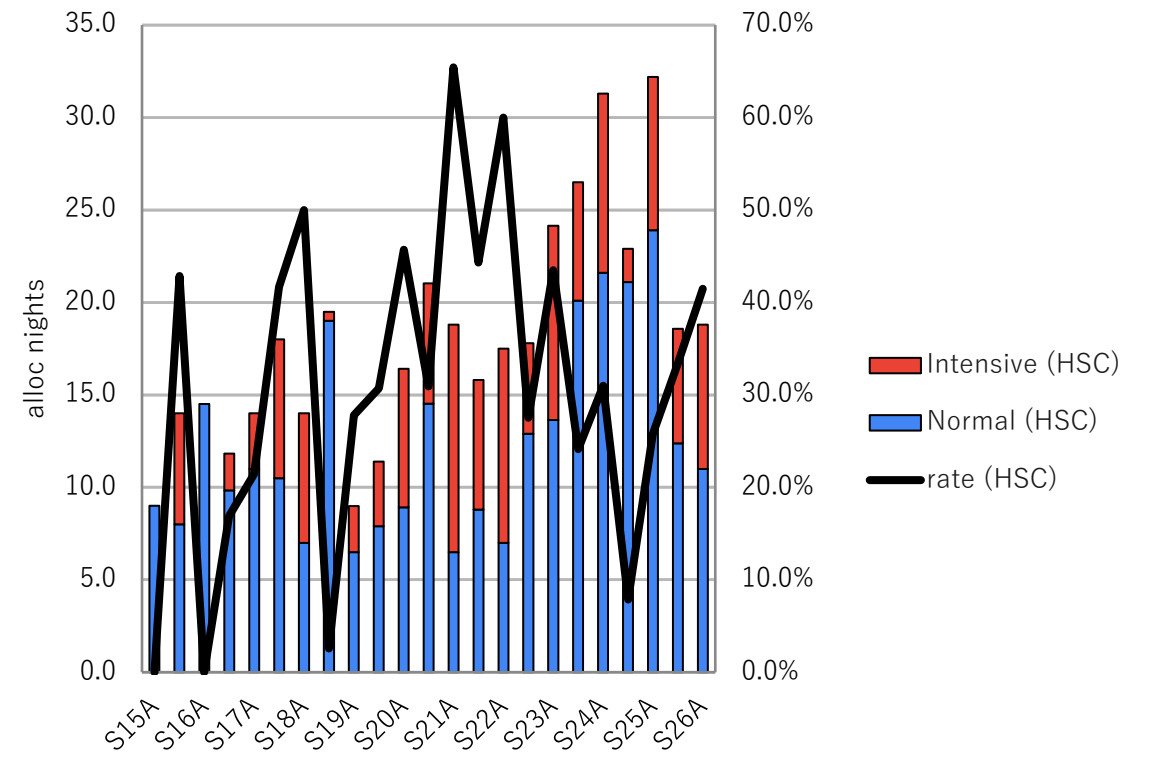
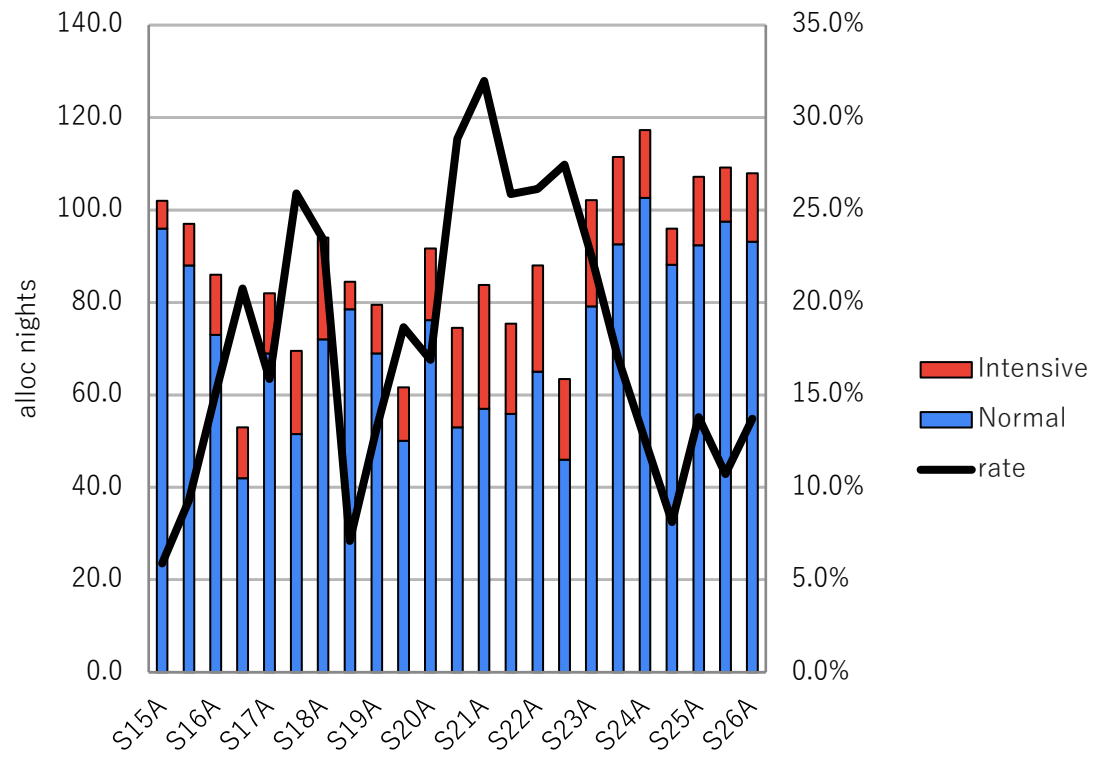
Student Proposals and Success Rate

Student Proposals (Proposal-Based) S10A-

■ Students fraction of submitted proposals ◆ Students fraction of approved proposals



Intensive Program



S26B Status

- Submitted proposals: 141
 - including 1 intensive program
- Approved proposals: 38
 - Including 1 intensive program
- Oversubscription rate: **3.7**
- Night requested: 388.75n.
- Night approved: 58.6n.
 - Including new intensive: 2n.
 - Including ongoing intensive: 16n.
- Oversubscription rate:
 - **6.6 incl. ongoing intensive**
 - **9.1 excl. ongoing intensive**

Available nights for normal programs are limited due to downtime

Proposal Preparation

- SJ Policy was updated in S26B and SJ Template is available
 - <https://ja.overleaf.com/read/tyxfpvdwxnyw#f9c6a9>
- Notes on PFS queue observations
- Provide all necessary information at proposal submission
 - Target List – cannot be modified after submitting your proposal
 - ROT, Fiber Hour, completion rate – obtained by running a pointing simulation using Target Uploader
 - **Run the pointing simulation. Only uploading the target list is not enough.**

PFS Community Filler Evaluation

- **PFS Community Filler proposal evaluation will be performed by TAC on S27A. We will NOT employ the Distributed Peer Review.**
- The evaluation will be simplified. Several TAC members read proposals to judge whether the proposal should be included in the queue.
- Issues on Community Filler DPR
 - Small number of proposals makes it difficult to guarantee that the final score is not biased.
 - Small number of groups that submit proposals. Overlaps of Co-Is make it difficult to assign the reviewers.

Normal Proposals by an Intensive Group

- A normal proposal is submitted by a group of an ongoing intensive program (with a different PI), asking for observations of the same targets with the same mode.
- This is not explicitly prohibited (only an intensive PI cannot submit a normal proposal) but **TAC decided it is not acceptable for this semester** (S26B).
- Discussions within SAC is ongoing about the “devotion” policy of the intensive program PI.

Subaru Observations and Life Events

- TAC has raised an issue to SAC **whether Subaru should have a policy if a life event occurs to the proposal PI while they are conducting a normal/intensive program.**
 - Should the observations be rescheduled?
 - Should the proprietary period of the data extended?
 - Any other things that can be done?
 - Or is it the team responsibility to cover the observations and the data reduction?
- Discussion has just started. Inputs welcome.

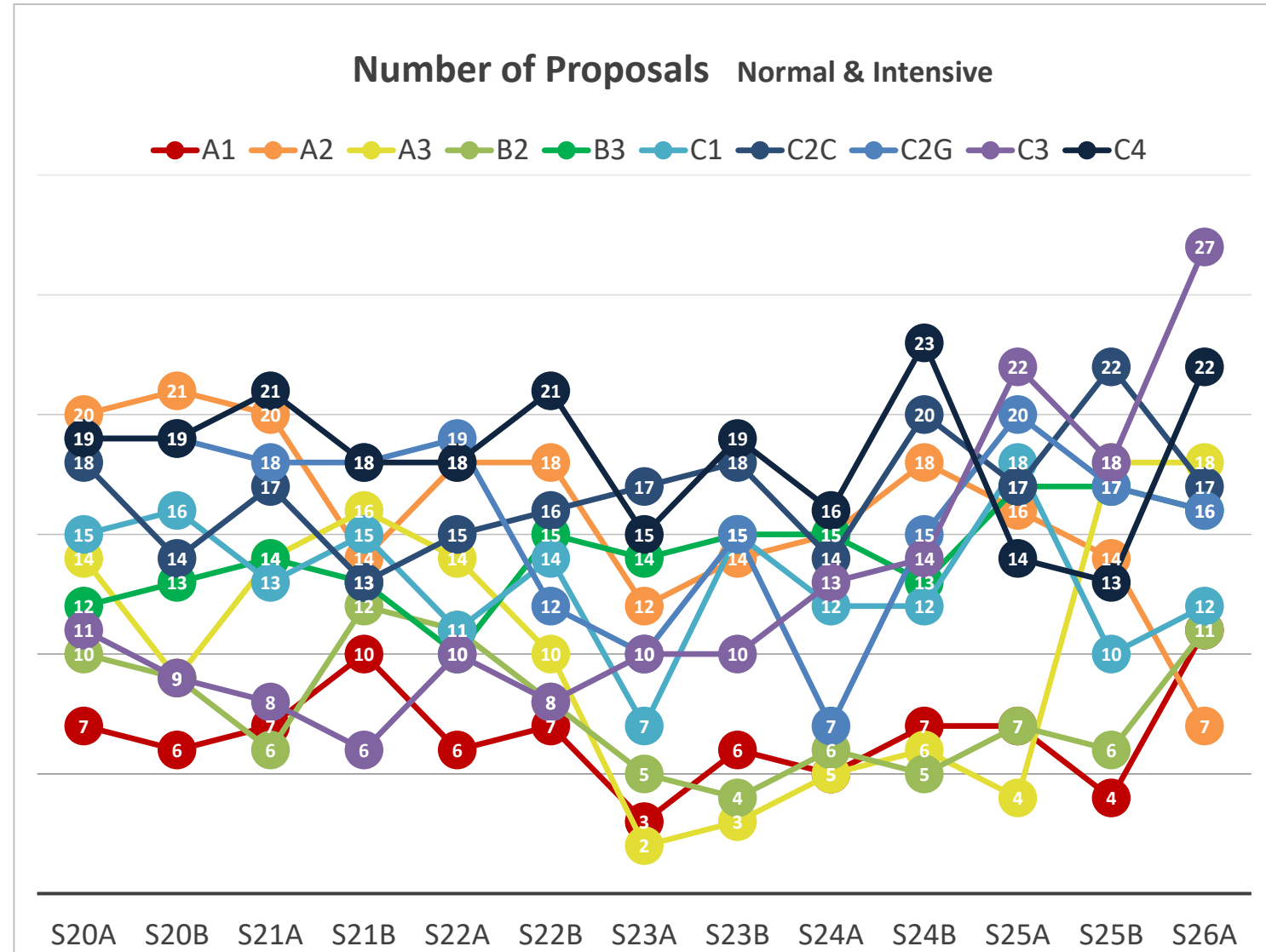
Summary

- S26A statistics
 - Slightly higher oversubscription than before
 - Good performance of student proposals
- S26B status
 - Highly competitive because of the telescope downtime.
- Notes on proposal preparation and evaluation
 - SJ template introduced
 - PFS queue mode preparation
 - PFS Community Filler evaluation will be done within TAC in S27A.
- Discussion items brought to SAC
 - Devotion policy of intensive Pis
 - Policy for life events

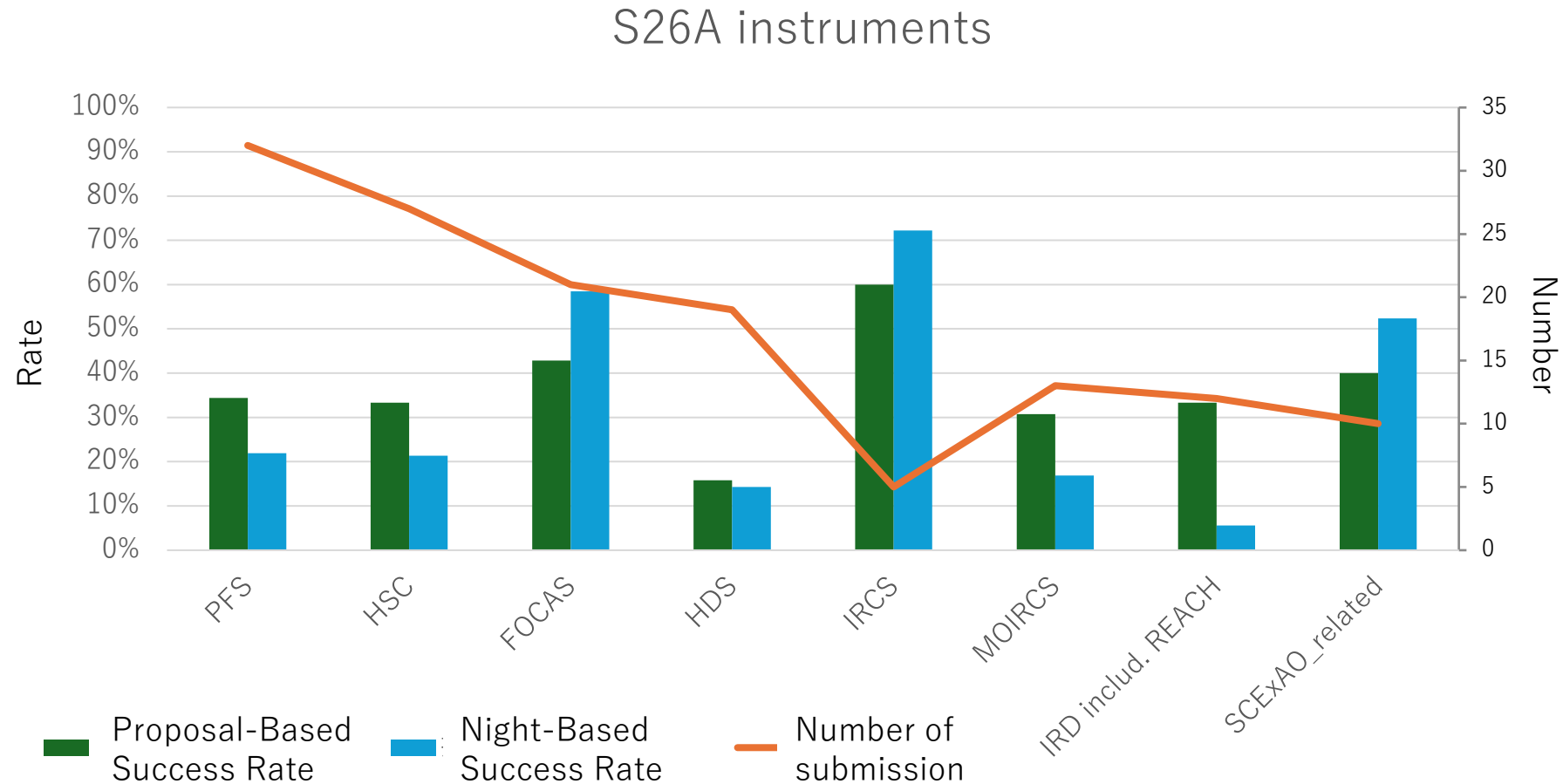
Appendix

S26A: Number of Proposals by Category

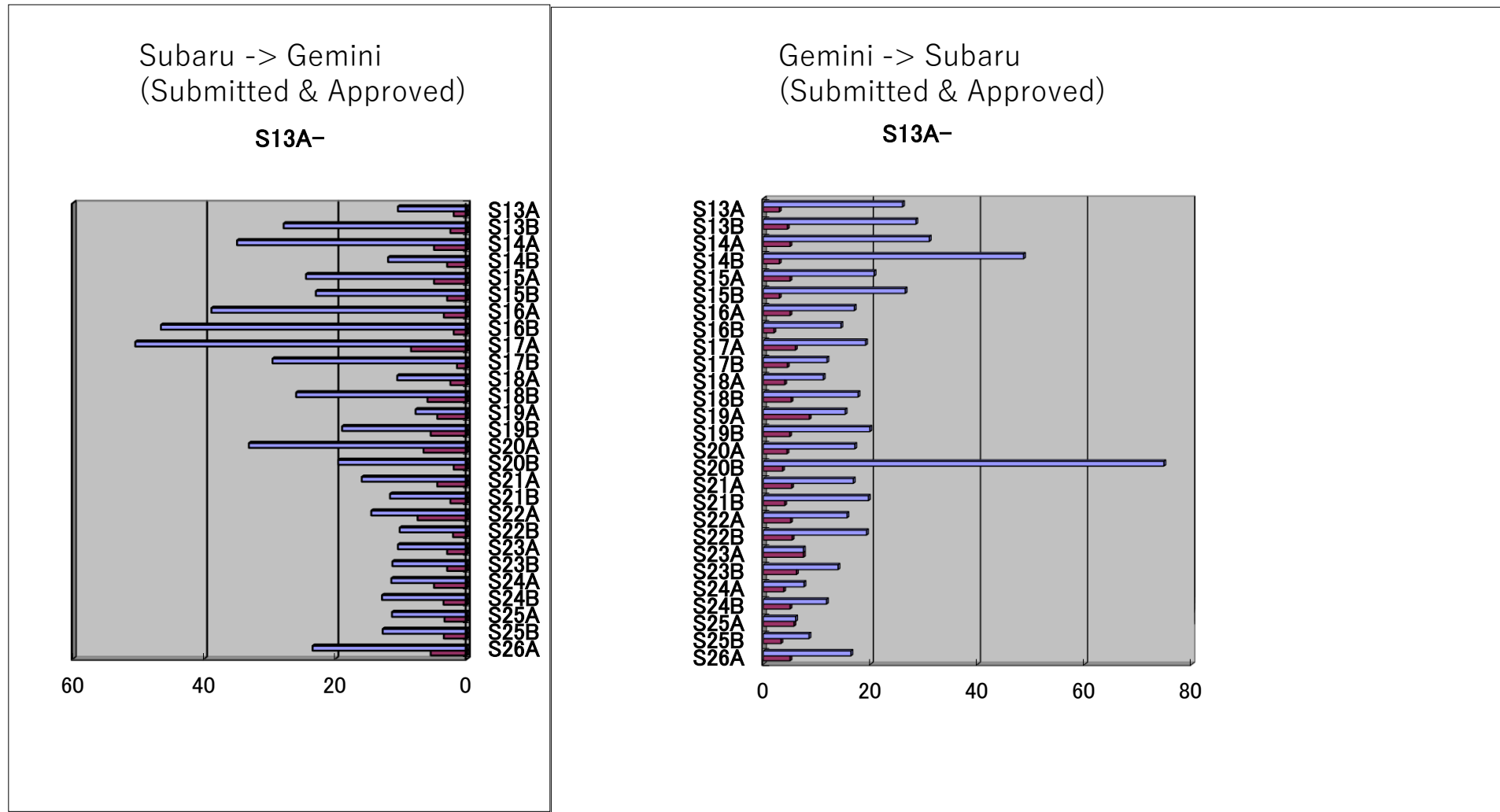
- A1: Solar system
- A2: Evolved Extrasolar Planets
- A3: Young Extrasolar Planets, Planet Formation, Star Formation, ISM
- B2: Stars and Brown Dwarfs, Stellar Envelope and Activity
- B3: Compact Objects and SNe
- C1: IGM and Abs. Line Systems, Cosmology, Gravitational Lenses, Circumgalactic Medium
- C2C: Clusters and Proto-Clusters, Environmental effect on galaxies
- C2G: High-z Galaxies (LAEs, LBGs), High-z Galaxies (others), Nearby Galaxies
- C3: Milky Way, Local Group, Galactic Archaeology
- C4: AGN and QSO Activity



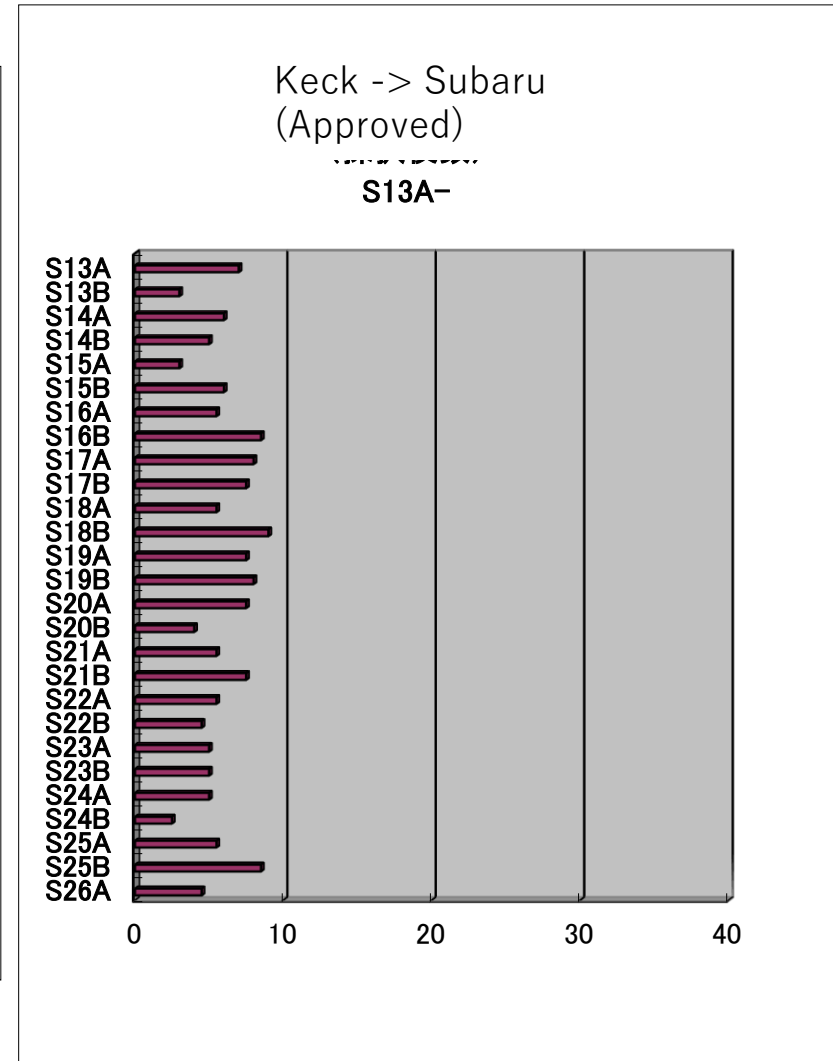
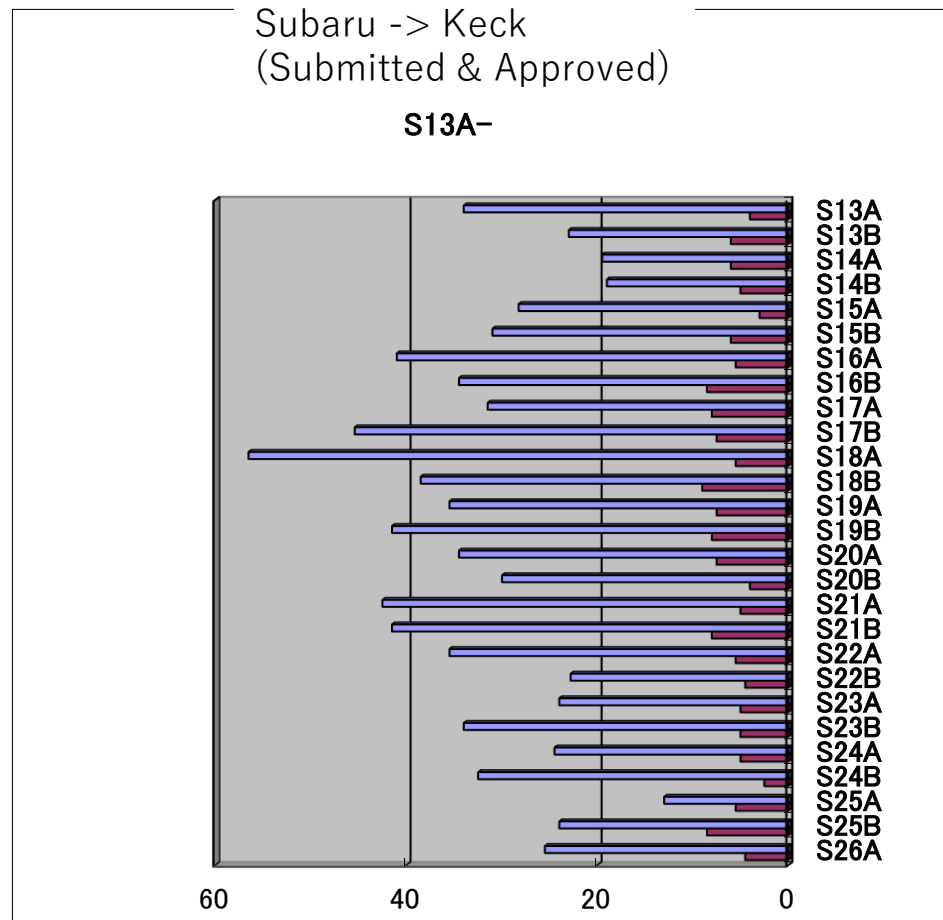
S26A: Instrument-Based Success Rate



S26A: Time Exchange (Gemini)

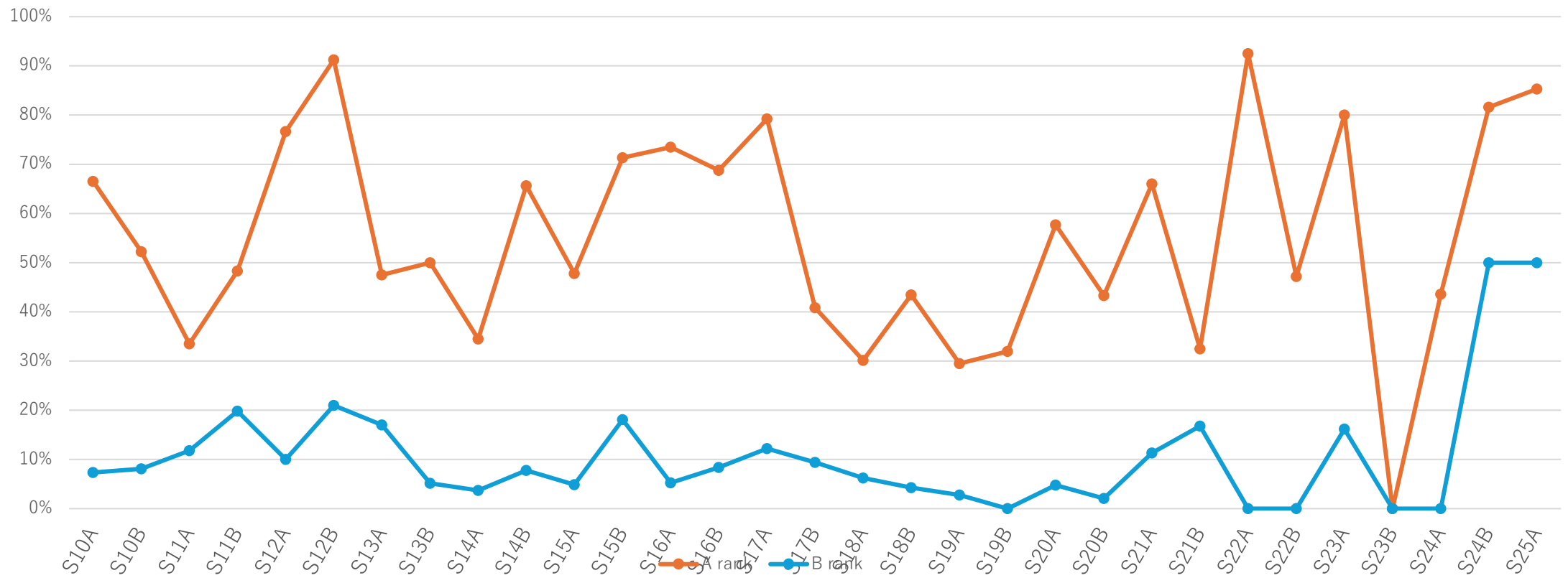


S26A: Time Exchange (Keck)



S26A: Service Program

Service Program Completion Rate1 S10A-



List of Ongoing Intensive Programs

- S24A-023I (PI: Currie, CRS+SCX, until S26B)
- S24B0080QI (PI: Osato, HSC-Q, 151 hr w/WF until S27A)
- S25A0047QI (PI: Momose, HSC-Q, until S27B)
- S25B-065I (PI: Hashimoto, CRS+SCX+NIRWFS-A03k, until S27B)、

PFS Community Filler

- Targets with sparse distribution are ideal targets for the PFS Community Filler program. They can produce science cases unique to Subaru.
- Two problems with PFS Community Filler last year
 - Completion rate
 - Proposal evaluation
- SAC has discussed these issues within a working group
- **Completion rate is improved after the observatory fixed the software to trigger CF observations.**