



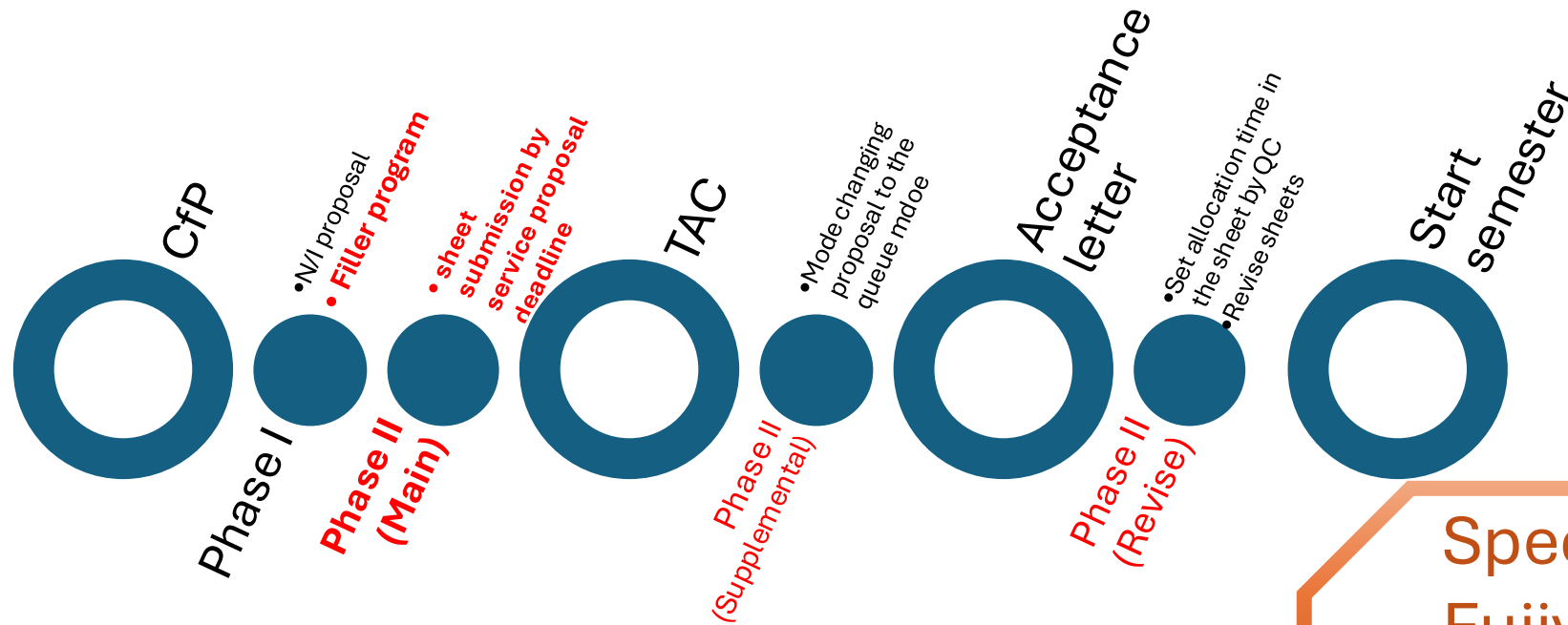
Science Operation FY2025-26

Tae-Soo Pyo

2026.06.17

HSC Queue mode: New procedure from S26A

- The Phase2 sheets for HSC Queue mode need to be submitted until Service Proposal deadline
- Observatory staff will modify the accepted observing time based on TAC results.

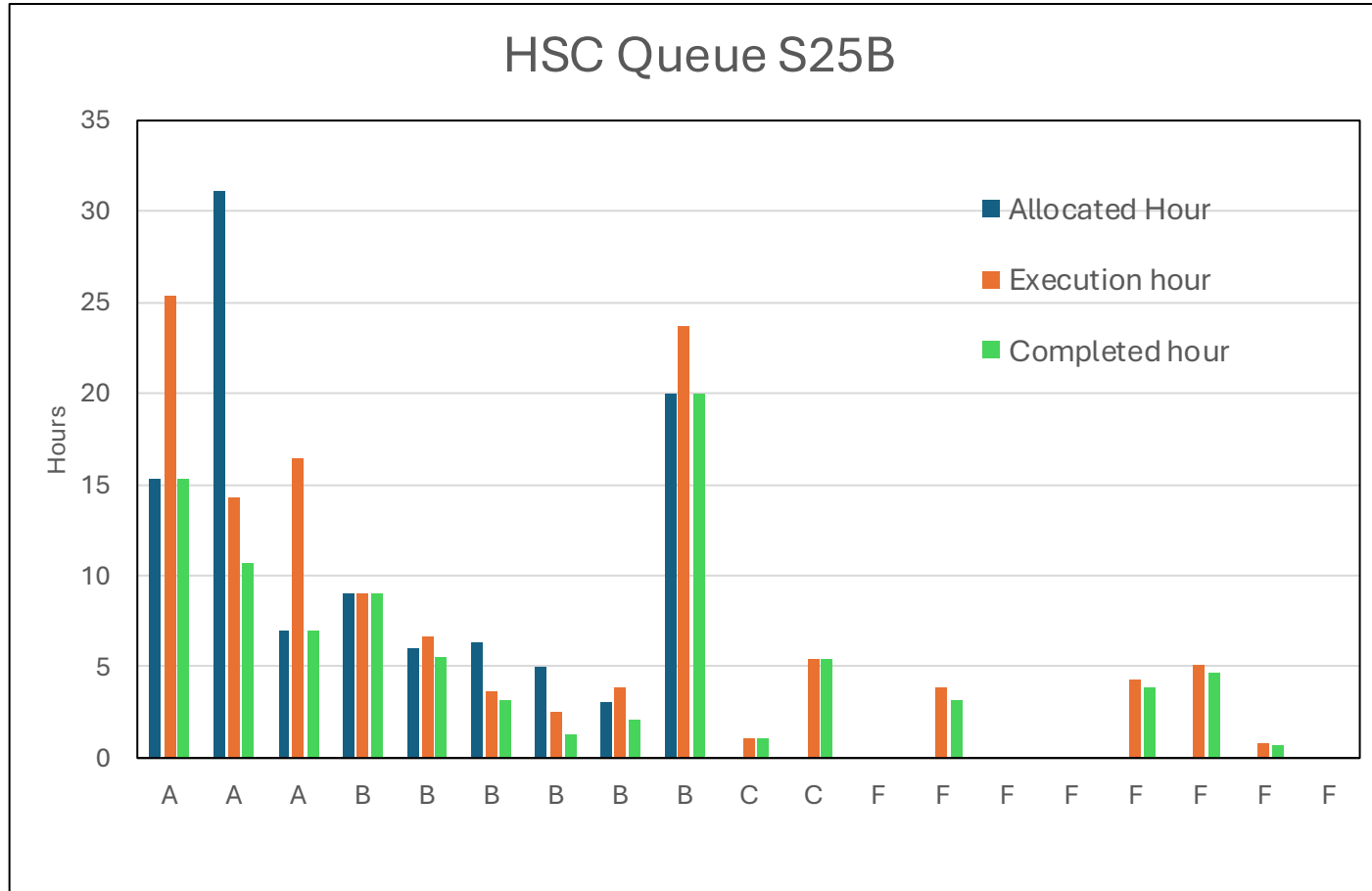


Thanked for your cooperation!

Special thanks to
Fujiyoshi-san,
Uekiyo-san,
Kobayakawa-san

HSC Queue Completion Rate: S25B

HSC Queue: 16.04 nights
2-runs (Aug, Oct)

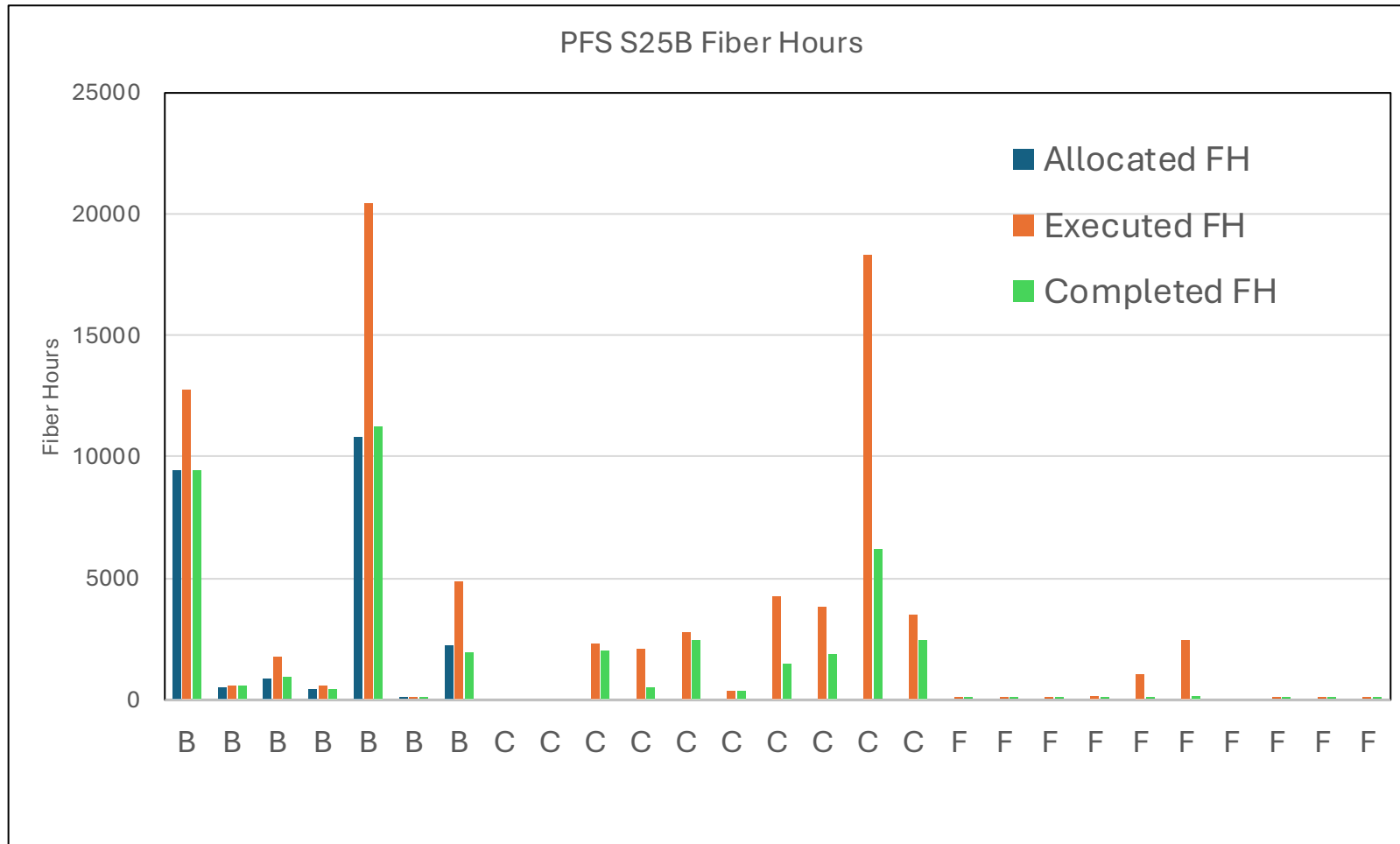


Grade	Completion rate	Execution rate	Success rate
A	78%	149%	59%
B	73%	94%	77%

Total execution hour for A&B: 105.3 hrs (63.4% of 160.4 hr)
 → 20.3 hrs for C & F due to bad weather. We lost 22% by downtimes (weather, telescope, inst,..) and overhead.

PFS Queue Completion Rate : S25B

Queue: 21.1 nights
2-runs (Sep, Nov)



Grade	Completion rate	Execution rate	Success rate
Average	101%	168%	67%
B1	100%	135%	74%
B2	103%	114%	90%
B3	106%	201%	53%
B4	95%	131%	72%
B5	103%	189%	55%
B6	96%	111%	87%
B7	88%	216%	41%

Grade C & F :

* Success rate = 39%

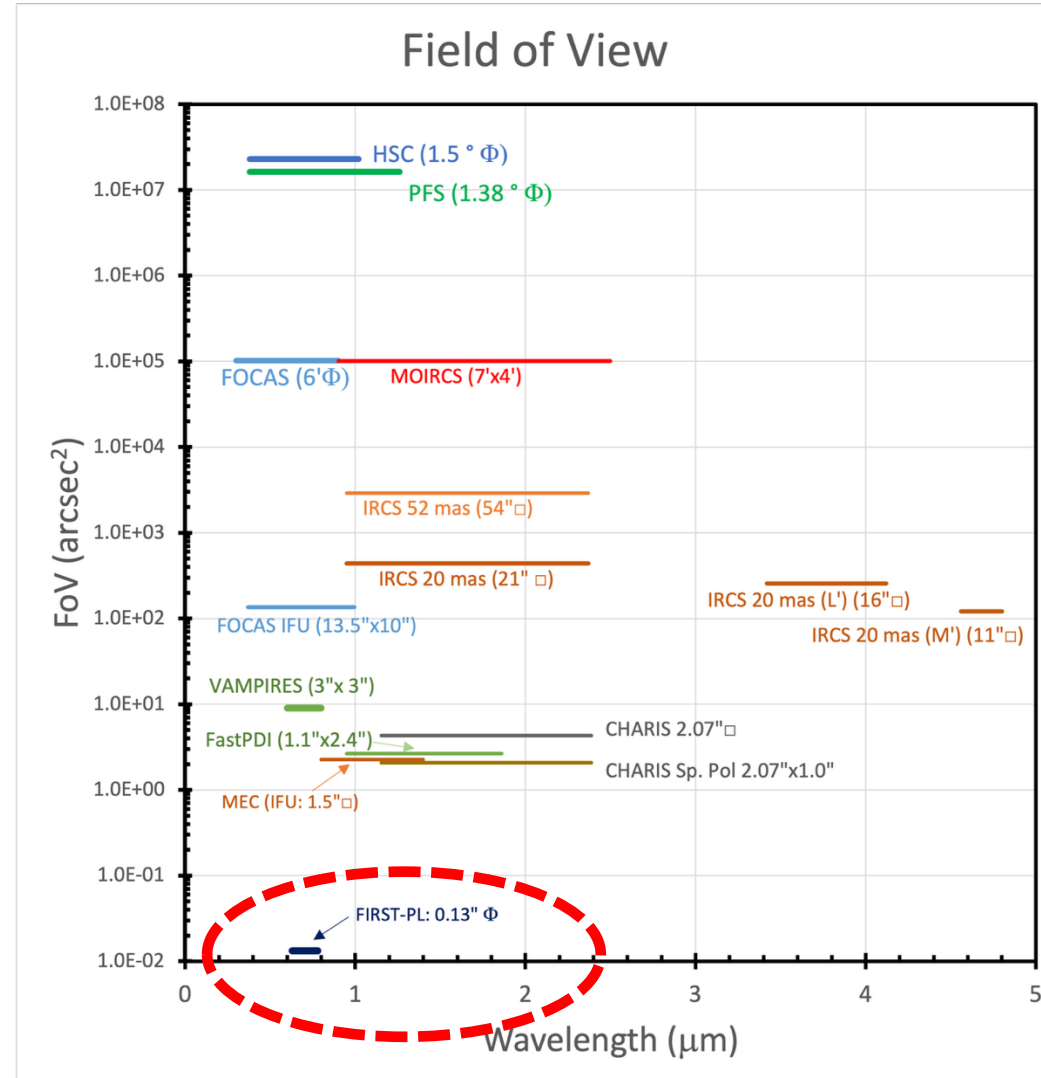
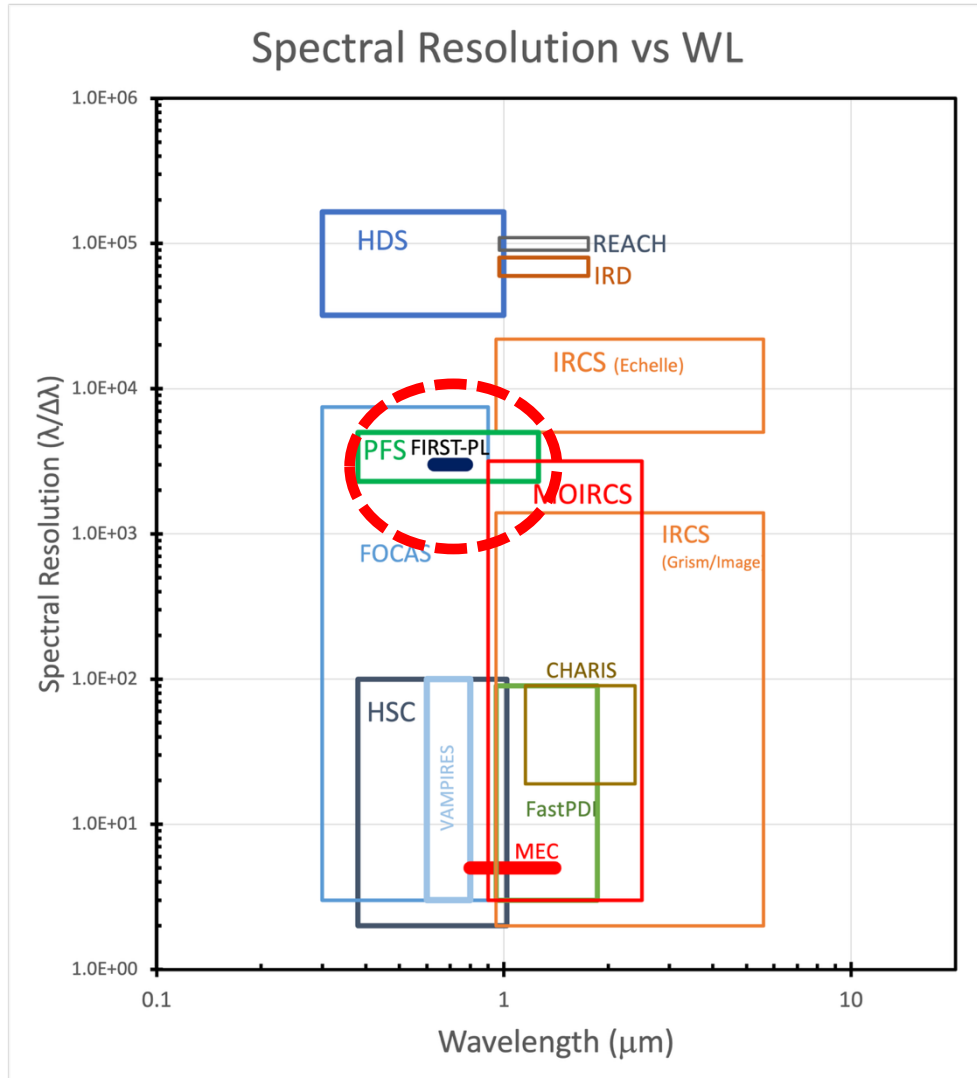
→ Many partially observed targets

→ Effective exposure time is shorter than observation time.

*C: 25% of the requested FH is observed in average.

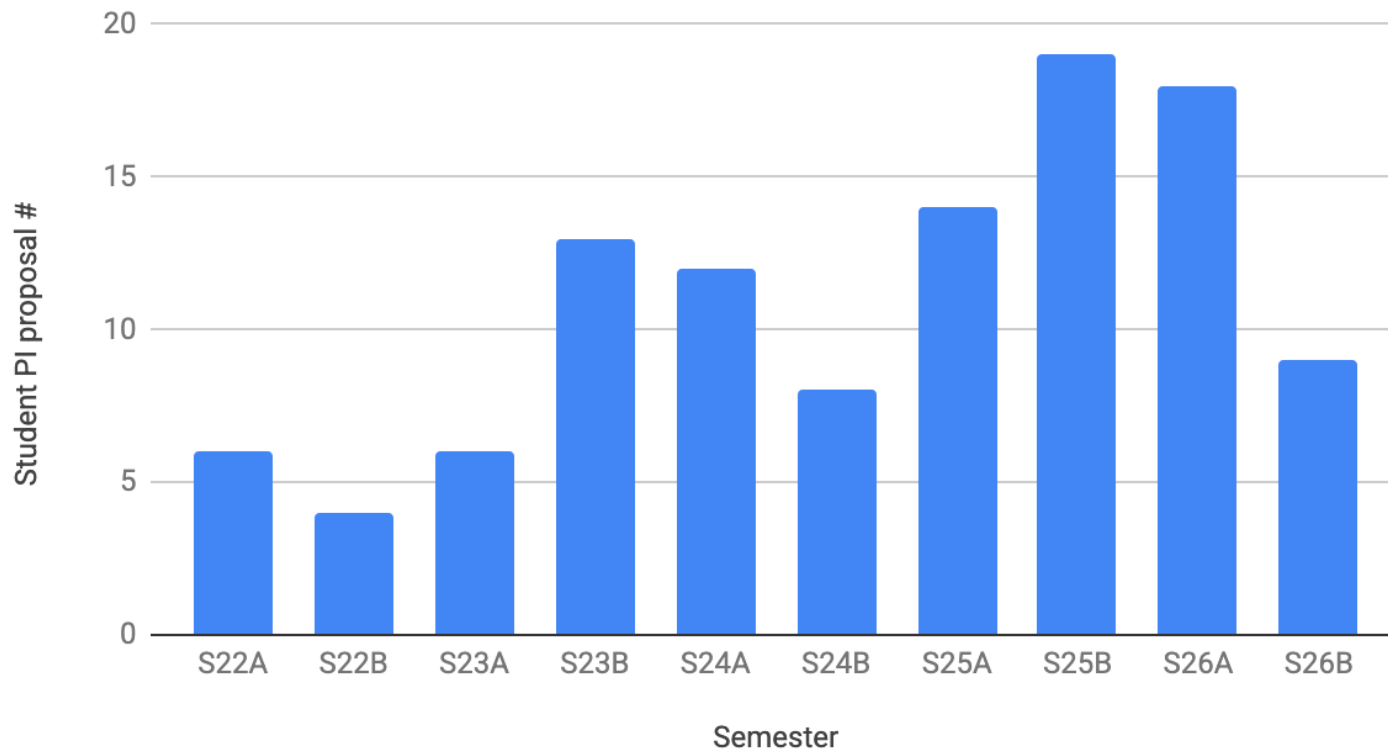
New Instrument: First-PL

- Fibered Imager for a Single Telescope - Photonic Lantern - is an imaging spectrometer operating in visible light (630-780nm, R=3000) at ultra-high angular resolution



Student PI Support

Student PI proposals (domestic)



The observatory places importance on the field experience of student PIs and supports on-site observations. If possible, we request that a supervising professor or co-researcher participate as well.

Change in the Science Operation Div

- Science Operation Group
 - Lead: Kentaro Aoki
 - Sub-Lead: Miho Ishigaki
- Observation Support (SAs) Unit
 - Lead: Tsuyoshi Terai