

MIRACLES

Mapping of Ionizing **R**Adiation on the **C**osmic web
with **L**ya **E**mission and **S**hadow

S21A-114I

Yuichi Matsuda (NAOJ)

Subaru Intensive Program (HSC/98h/S21A-S23A) ²

(Page 1)

Subaru Telescope
National Astronomical Observatory of Japan

Semester	S21A
Proposal ID	S21A0114QI
Received	09/08/2020

Application Form for Telescope Time (Queue Normal+Intensive Programs)

1. Title of Proposal

Mapping of ionizing radiation on the cosmic web with Ly α emission and shadow

2. Principal Investigator

Name: Matsuda Yuichi
Institute: NAOJ
Mailing Address: 2-21-1 Osawa Mitaka Tokyo 181-8588
E-mail Address: yuichi.matsuda@nao.ac.jp Phone: 0422-34-3900-3101

3. Scientific Category

- | | | | |
|---|--|--|--|
| <input type="checkbox"/> Solar System | <input type="checkbox"/> Extrasolar Planets | <input type="checkbox"/> Star Formation and Young Disk | <input type="checkbox"/> ISM |
| <input type="checkbox"/> Normal Stars | <input type="checkbox"/> Metal-Poor Stars | <input type="checkbox"/> Compact Objects and SNe | <input type="checkbox"/> Milky Way |
| <input type="checkbox"/> Local Group | <input type="checkbox"/> Nearby Galaxies | <input checked="" type="checkbox"/> IGM and Abs.Line Systems | <input type="checkbox"/> Cosmology |
| <input type="checkbox"/> Gravitational Lenses | <input type="checkbox"/> Clusters and Proto-Clusters | <input type="checkbox"/> Galaxy Properties and Environment | |
| <input type="checkbox"/> High- z Galaxies(LAEs, LBGs) | <input type="checkbox"/> High- z Galaxies(others) | <input type="checkbox"/> AGN and QSO Activity | <input type="checkbox"/> Miscellaneous |

4. Abstract (*approximately 200 words*)

We propose direct Ly α imaging of the cosmic web toward the $z = 3.09$ SSA22 protocluster with HSC. This program will map out the spatial distribution of both ionized HII gas (via Ly α emission) and neutral HI gas (via Ly α absorption) simultaneously in and around the protocluster in a cosmological volume of $180 \times 180 \times 50$ comoving Mpc by using the same, deepest NB497 image. We will unveil (1) the physical properties of the gas filaments, (2) the connection between the cosmic web and galaxies/AGNs, and (3) the role of the cosmic web on cluster formation. To identify HII gas filaments down to Ly α surface brightness of $SB_{Ly\alpha} = 3 \times 10^{-19}$ ergs s $^{-1}$ cm $^{-2}$ arcsec $^{-2}$ with a 3σ level at a 3-arcsec resolution, we request 63 hours integration for NB497, in addition to 6 hours for g -band, and 9 hours for r -band images for precise continuum correction. To trace HI gas overdensity with a 5 cMpc resolution, we request 3 hours integration for NB527 to select ~ 400 LBGs at $z = 3.3$ with Ly α emission as background light sources. This special combination of emission and absorption line studies will enable us to constrain the total mass of main gas reservoir and radiative feedback process during the peak epoch of galaxy, super massive black hole, and cluster formation.

5. Co-Investigators

4 more Co-Is

Name	Institute	Name	Institute
Hideki Umehata	RIKEN	Michele Fumagalli	Durham University
Ken Mawatari	Univ. of Tokyo	Ian Smail	Durham University
Hidenobu Yajima	Univ. of Tsukuba	David Alexander	Durham University
Masayuki Umemura	Univ. of Tsukuba	Yoichi Tamura	Nagoya Univ.
Masao Mori	Univ. of Tsukuba	Keiichi Matsuda	Nagoya Univ.
Takuya Hashimoto	Univ. of Tsukuba	Satoshi Kikuta	NAOJ
Scott Chapman	Dalhousie University	Kentaro Nagamine	Osaka Univ.
Tomoki Hayashino	Tohoku Univ.	Masami Ouchi	Univ. of Tokyo
Toru Yamada	JAXA	Yoshiaki Ono	Univ. of Tokyo
Charles Steidel	Caltech	Kotaro Kohno	Univ. of Tokyo

6. Thesis Work

- This proposal is linked to the thesis preparation of _____

7. Subaru Open Use Intensive Programs

- This is a proposal for Intensive Programs.

(Page 3)

Proposal ID S21A0114QI

Title of Proposal

Mapping of ionizing radiation on the cosmic web with Ly α emission and shadow

12. Observing Run

Instrument	Hours	Moon phase	Moon distance	Seeing	Transparency	OnSrc Hours
HSC	98	dark/gray	120	3	0.7	81

comments:

Total Requested Number of Hours Minimum Acceptable Number of Hours

13. Instrument Requirements *Specify the set of filters to use (HSC).*

We are going to use g , r , NB497 and NB527 filters.

14. List of Targets

Target Name	RA	Dec	Magnitude (Band)
SSA22	221734.00	+001700.0	30.4 ABmag arcsec $^{-2}$ (NB497)

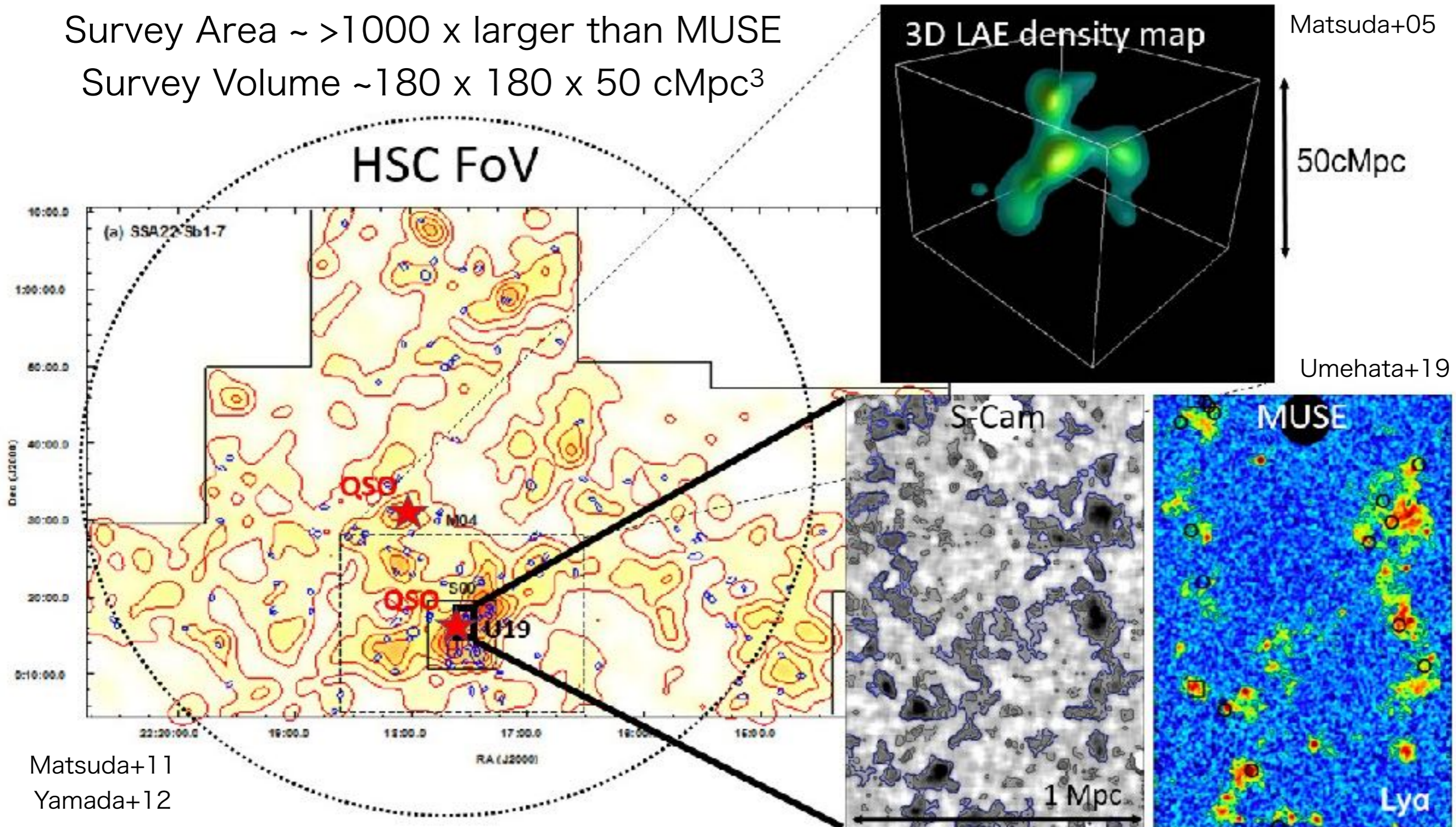
Akio Inoue, Ikki Mitsuhashi, Mariko Kubo
Rieko Momose, Satoshi Yamanaka

HSC Observations of Cosmic Web³

- (1) The physical properties of the cosmic web (width, length, mass, & ionizing radiation field)
- (2) The connection between the cosmic web and galaxy / black hole growths
- (3) The role of the cosmic web on cluster formation

Survey Area ~ >1000 x larger than MUSE

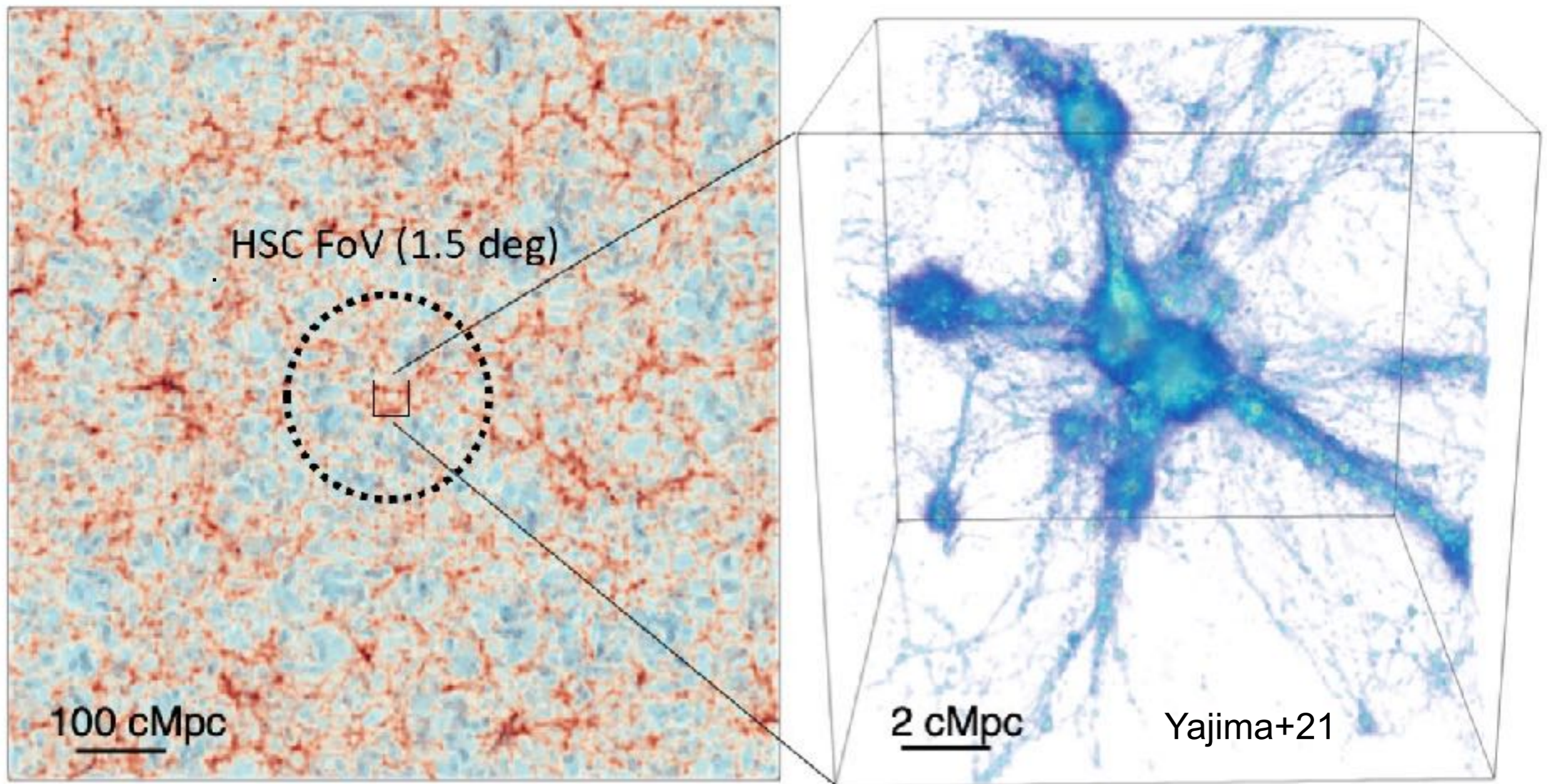
Survey Volume ~180 x 180 x 50 cMpc³



Why Cosmic Web?

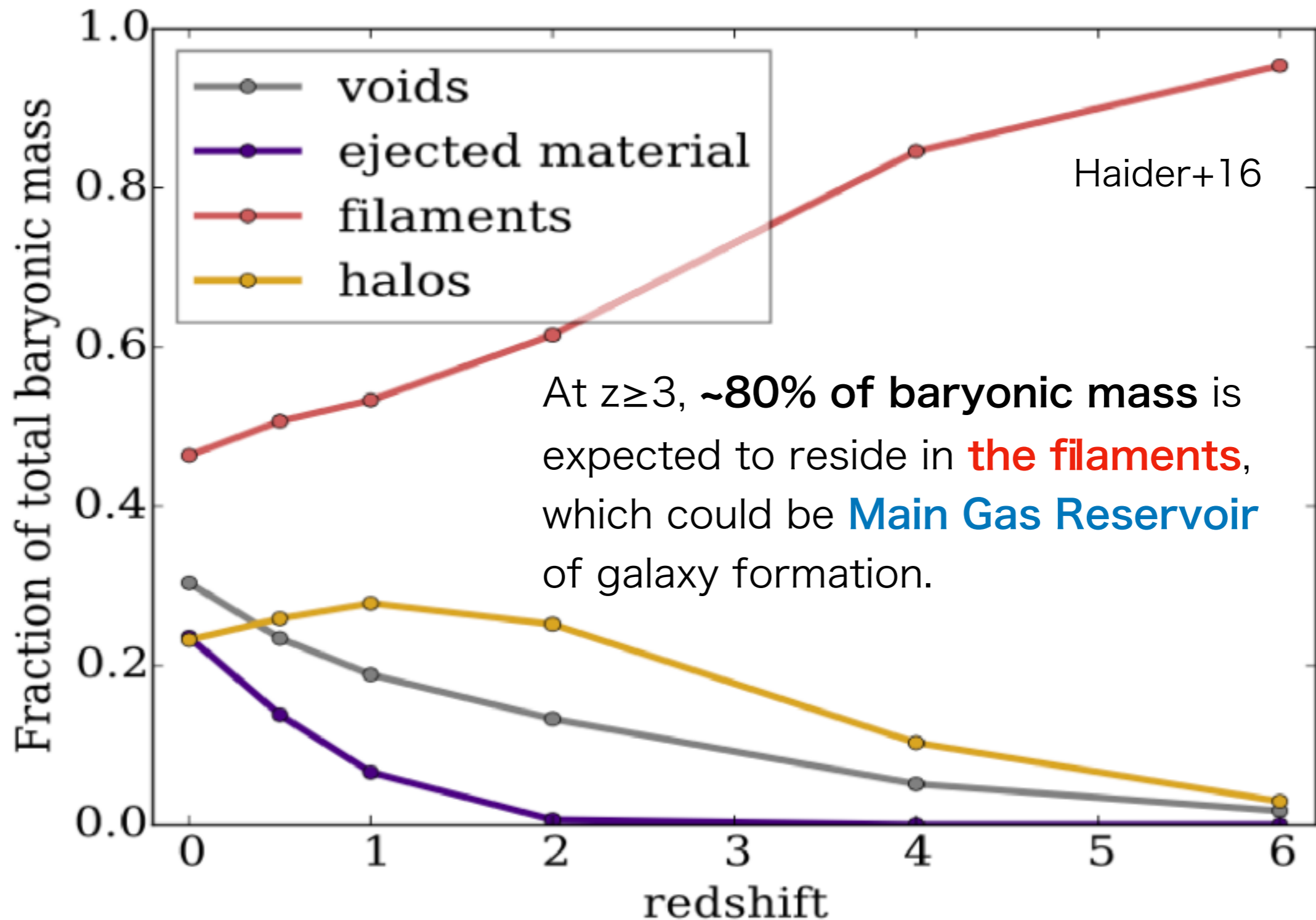
The Λ CDM cosmological model predicts that galaxies form along the cosmic web and galaxy clusters form at their intersections

(a) 2D dark matter map at $z=3$ (b) 3D gas map in protocluster



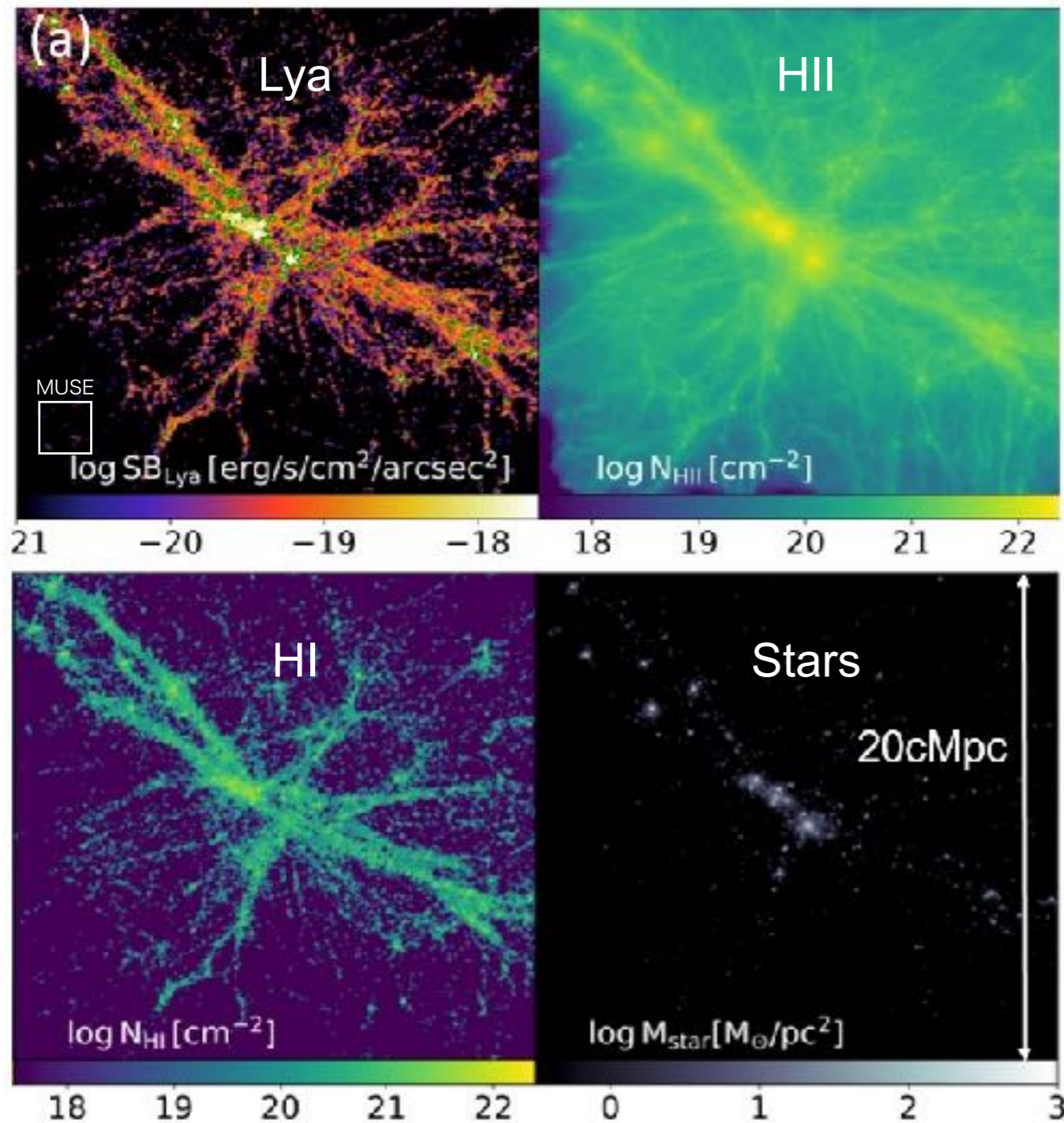
Baryonic Cosmic Web

Predicted evolution of baryonic mass in the cosmic structure



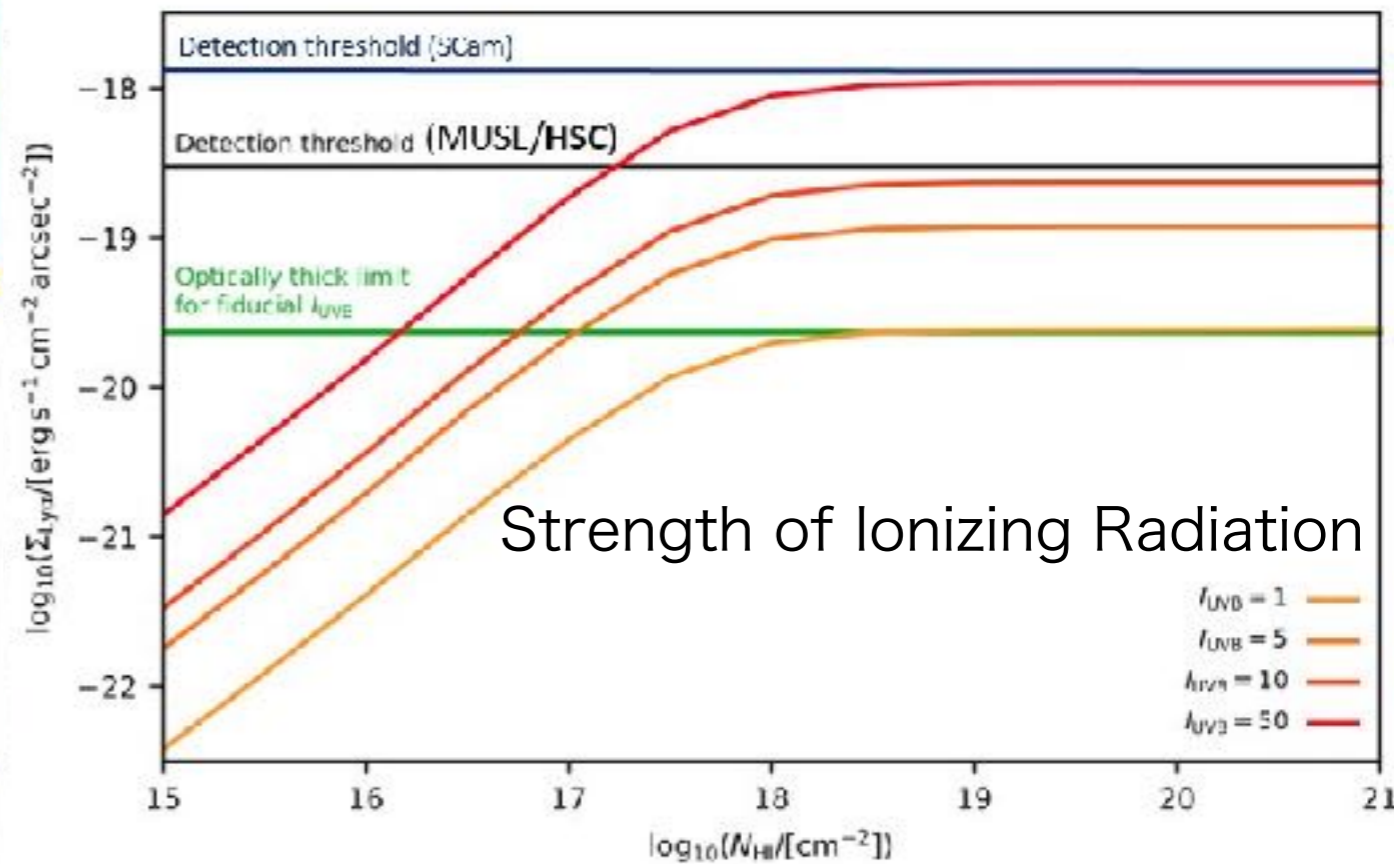
HII gas mapping (emission)

Predicted Ly α emission from the cosmic web
(Yajima+21)



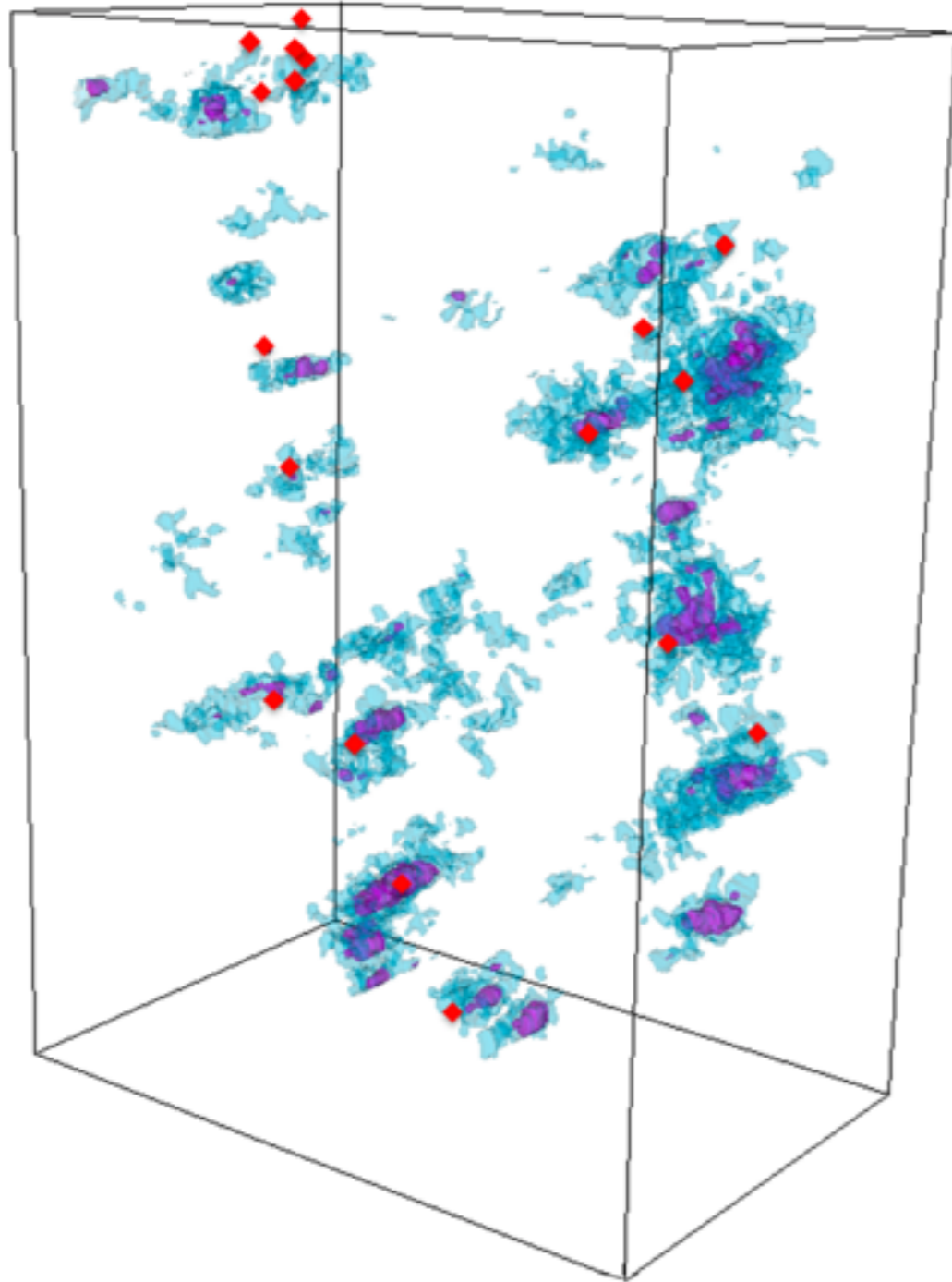
We can measure the strength of the ionizing radiation which illuminate the surface of the gas filaments.

Umehata+19

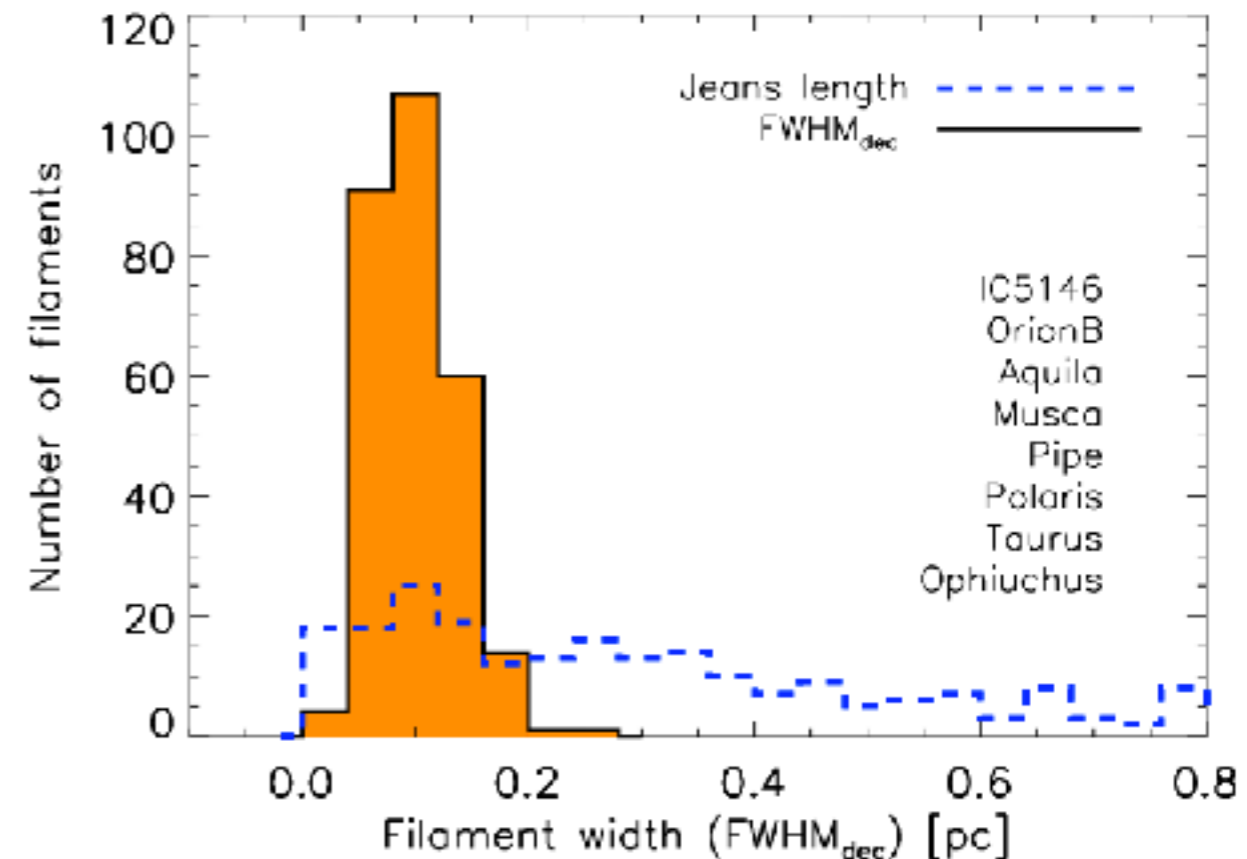
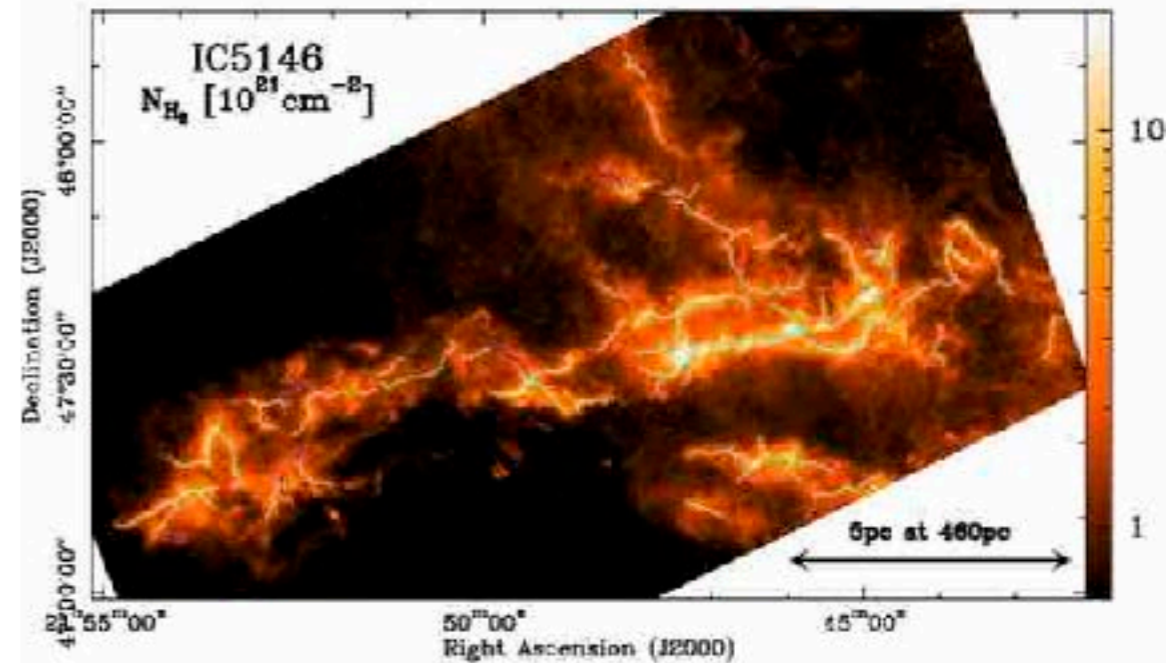


Do the filaments have a characteristic width? ⁷

3D structure of Ly α emitting filaments
(Umehata+19)



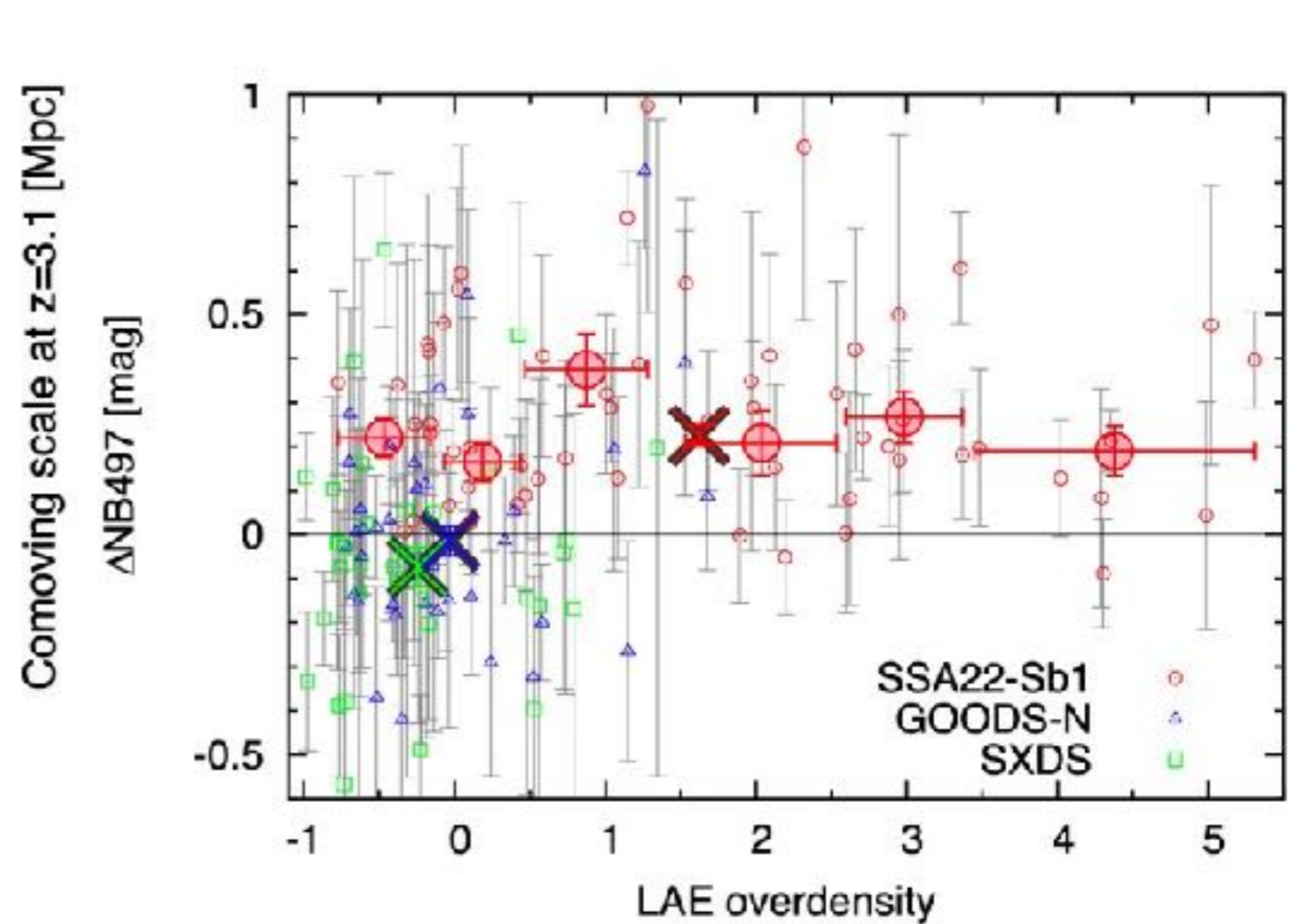
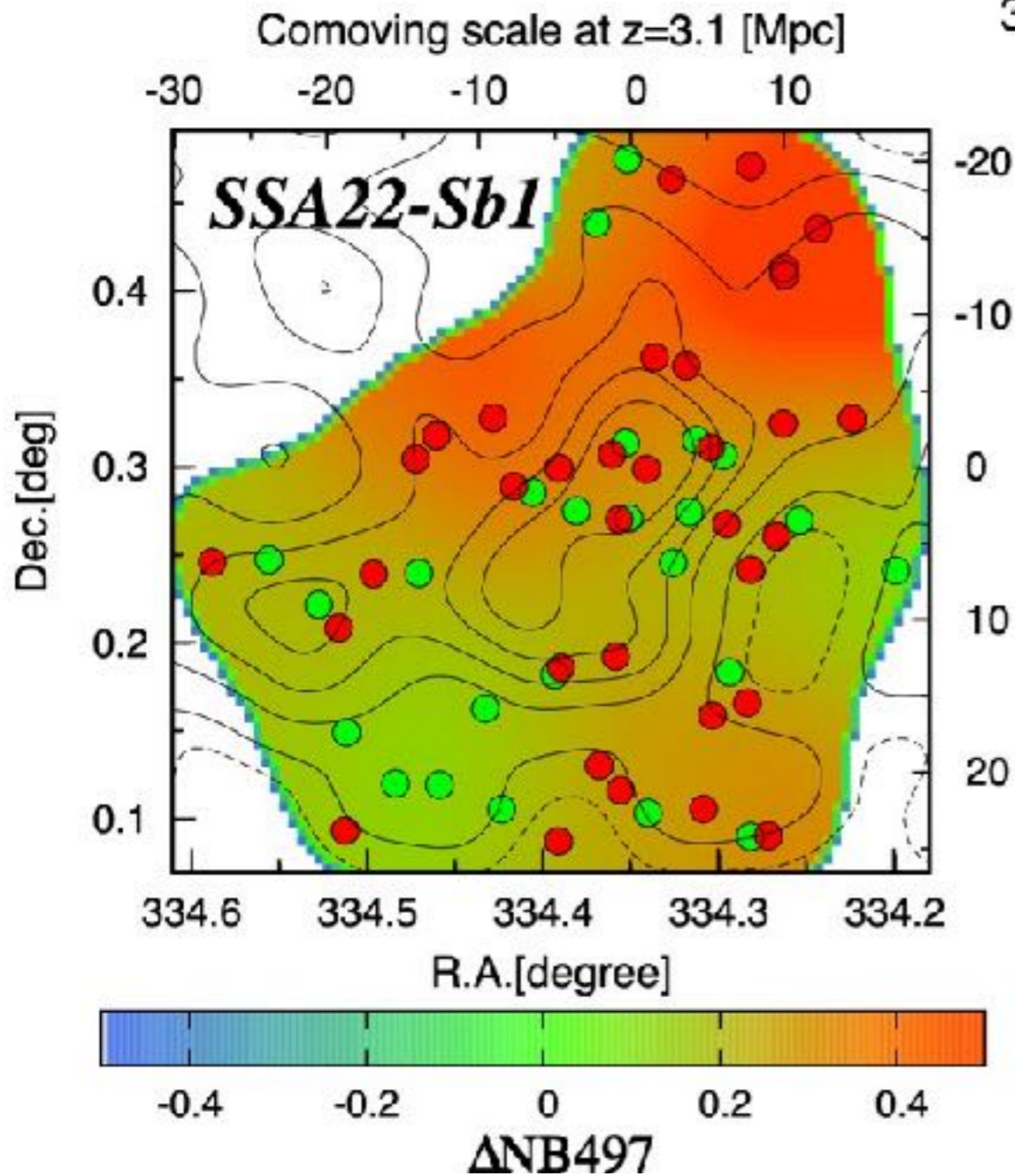
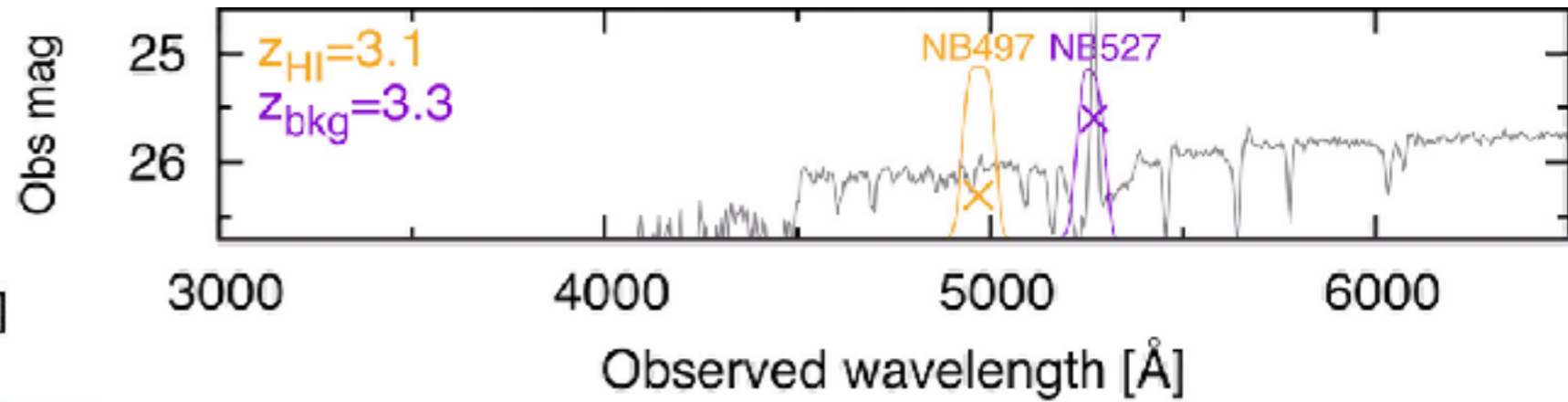
c.f Local Molecular Gas Filaments
(Arzoumanian+11/19, Shimajiri+19ab)



Typical width of ~50-100kpc?

HI gas mapping (absorption) ⁸

We will make 2D HI map along the 100cMpc field of view with a 5cMpc resolution



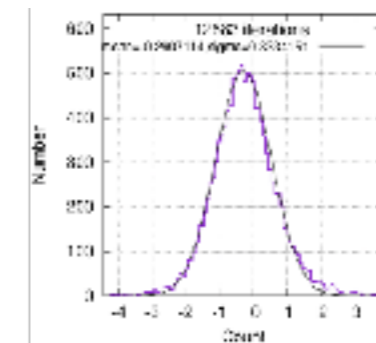
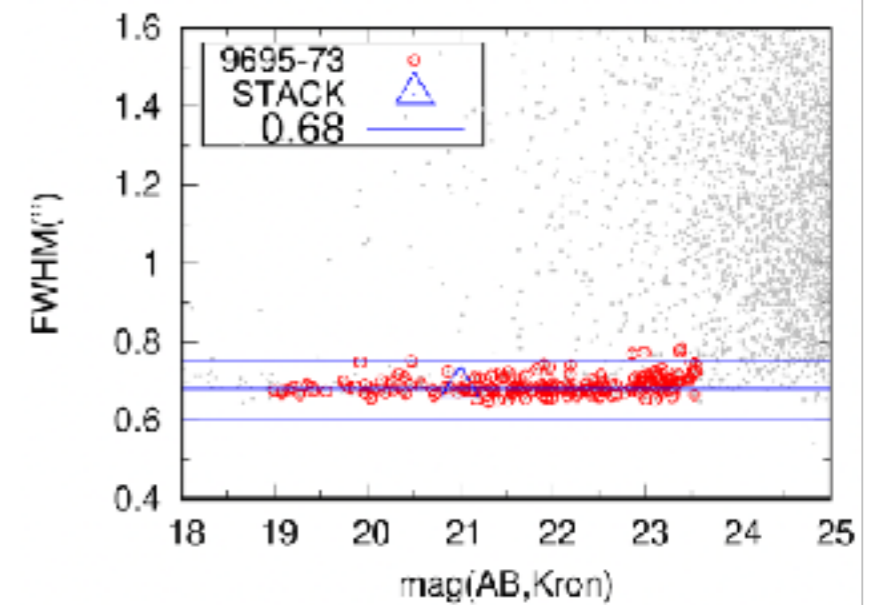
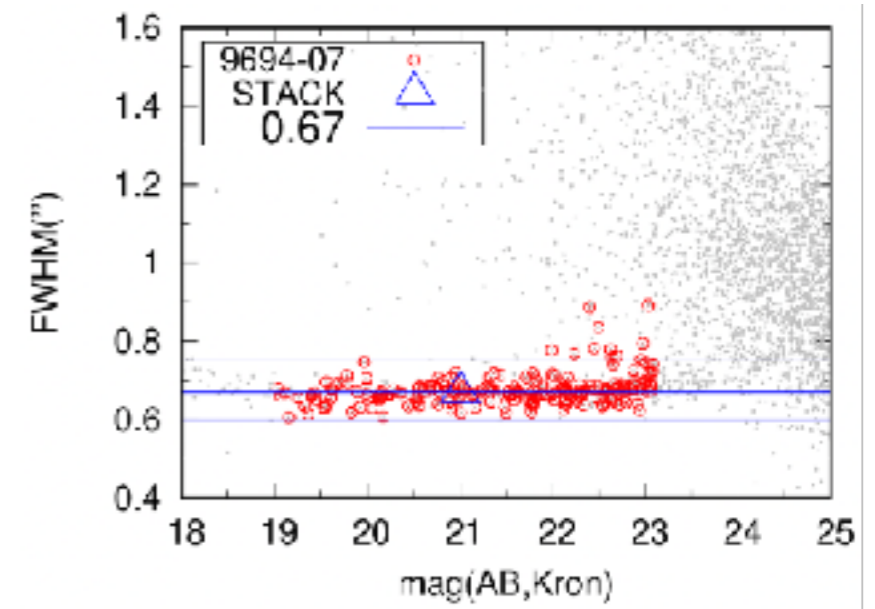
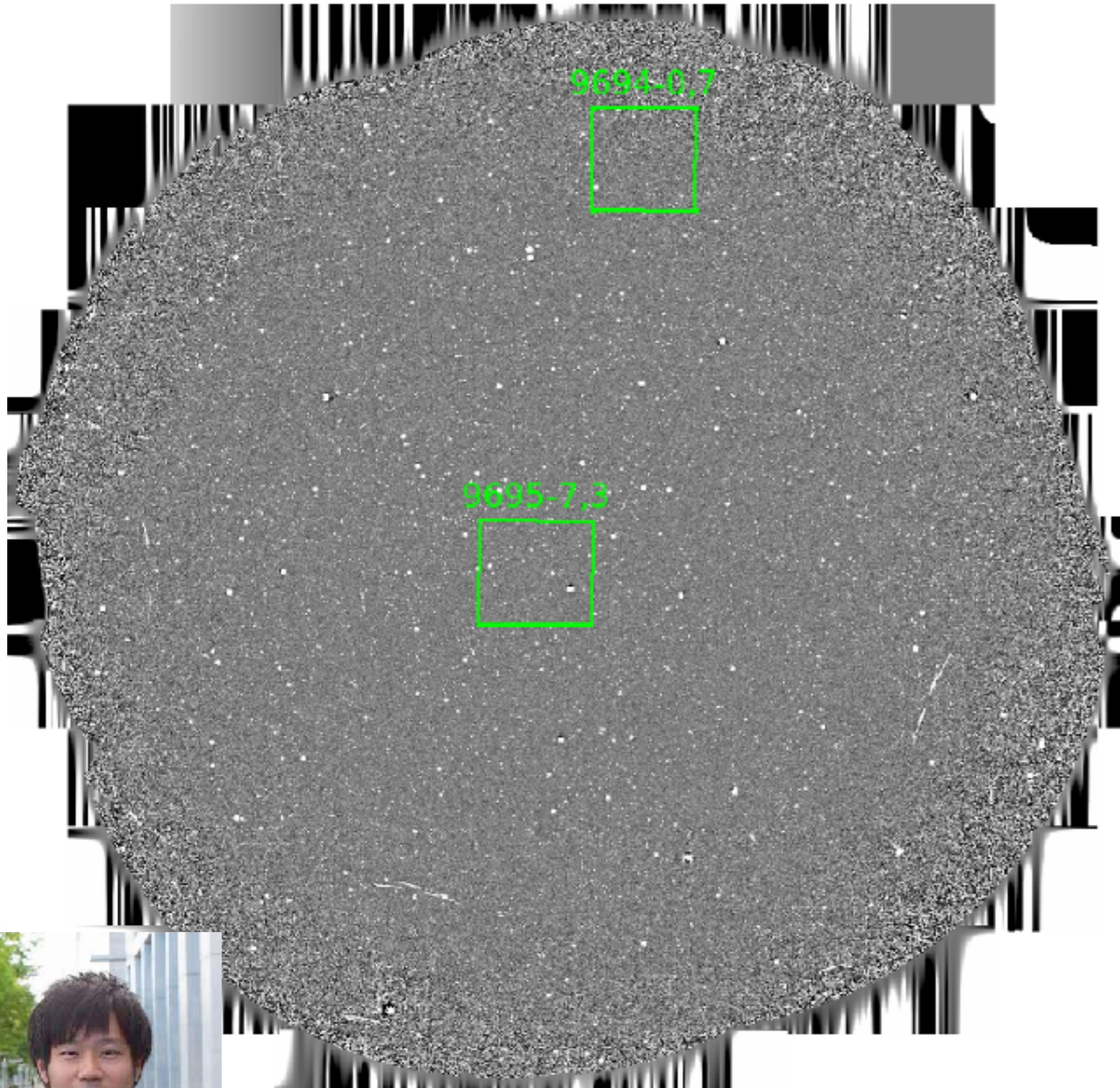
Mawatari+17

Coordinated CFHT/MegaCam U-band 13.1 hours program (Chapman+)

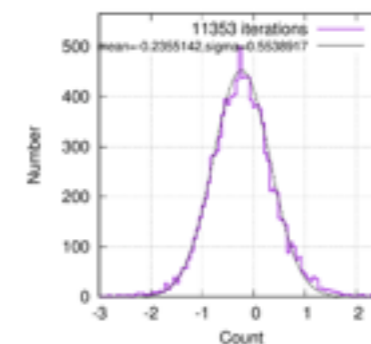
Observation Plan & Status

- HSC Queue: S21A-S23A (18h/20h/20h/20h/20h)
 - HSC/NB497 - 63h (**2.3h**, 4%)
 - HSC/NB527 - 3h (**3h**, 100%)
 - HSC/g-band - 8h (**5h**, 63%)
 - HSC/r-band - 10h (**5.2h**, 52%)
 - MegaCam/u-band - 13h (**13h**, 100%)
 - Add NB506/515 to increase number of background LBGs by factor of 3?
- For S21A-S21B, 48% achievement (July/Dec runs were canceled by Earthquake/Storm)**

Coadded NB527 image



**5 σ =25.45AB
(2" aperture)**



**5 σ =25.9AB
(2" aperture)**



Mawatari-san's analysis

MIRACLES

A 98 hours Subaru/HSC Intensive Program
to map out the baryonic cosmic web at high- z

Survey Area $\sim >1000$ x larger than MUSE

Survey Volume $\sim 180 \times 180 \times 50$ cMpc³

