



IRCS-HRU

Subaru IRCS High Resolution Unit

Hiroshi TERADA
(NAOJ, Hawaii)



Project

『 Man-power 』

Terada (NAOJ) : PI

Pyo (NAOJ): IRCS-related work

Colley, Lamos, Weber (NAOJ) : Electronics, and software

Kobayashi (U-tokyo), Ikeda (Kyoto-SU) :

Immersion grating, and instrument overall

Hayashi, Usuda, Tamura (NAOJ), Kawakita (Kyoto-SU),

Matsunaga (U-Tokyo), Sato (TITech) … : Science

Tokunaga, Rayner (IfA) : Array Electronics, and instrument calibration

Seifahrt (UCD) : Infrared Gas Cell

『 Budget 』

Si immersion grating development : \$ 240K

FY18-21 Research promotion budget (PI: Terada)

IRCS-HRU development : \$ 300K

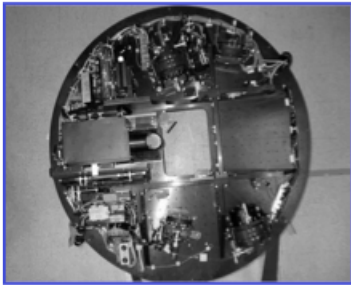
FY21-24 Kakenhi (Kiban(A); PI: Hayashi)



Subaru IRCS: Current Status

2000.02--: IRCS
2001.12--: IRCS+AO36

--2005.06



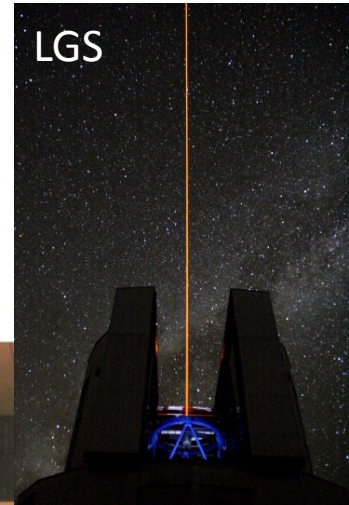
AO36



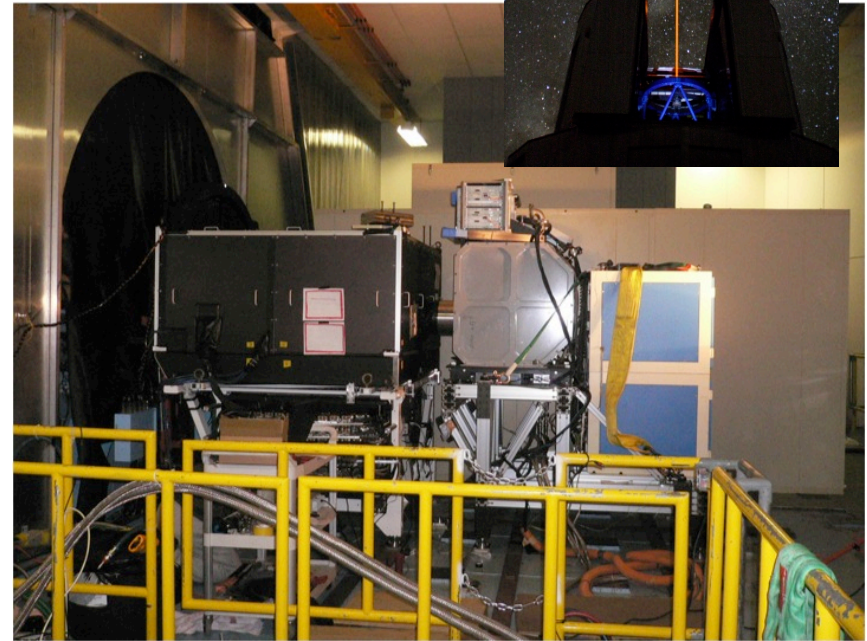
IRCS@Cs

*High Efficiency
Spectroscopy w/ AO*

2005.12-- : IRCS
2008.08-- : IRCS+AO188
2011.XX-- : IRCS+AO188
w/ LGS



LGS

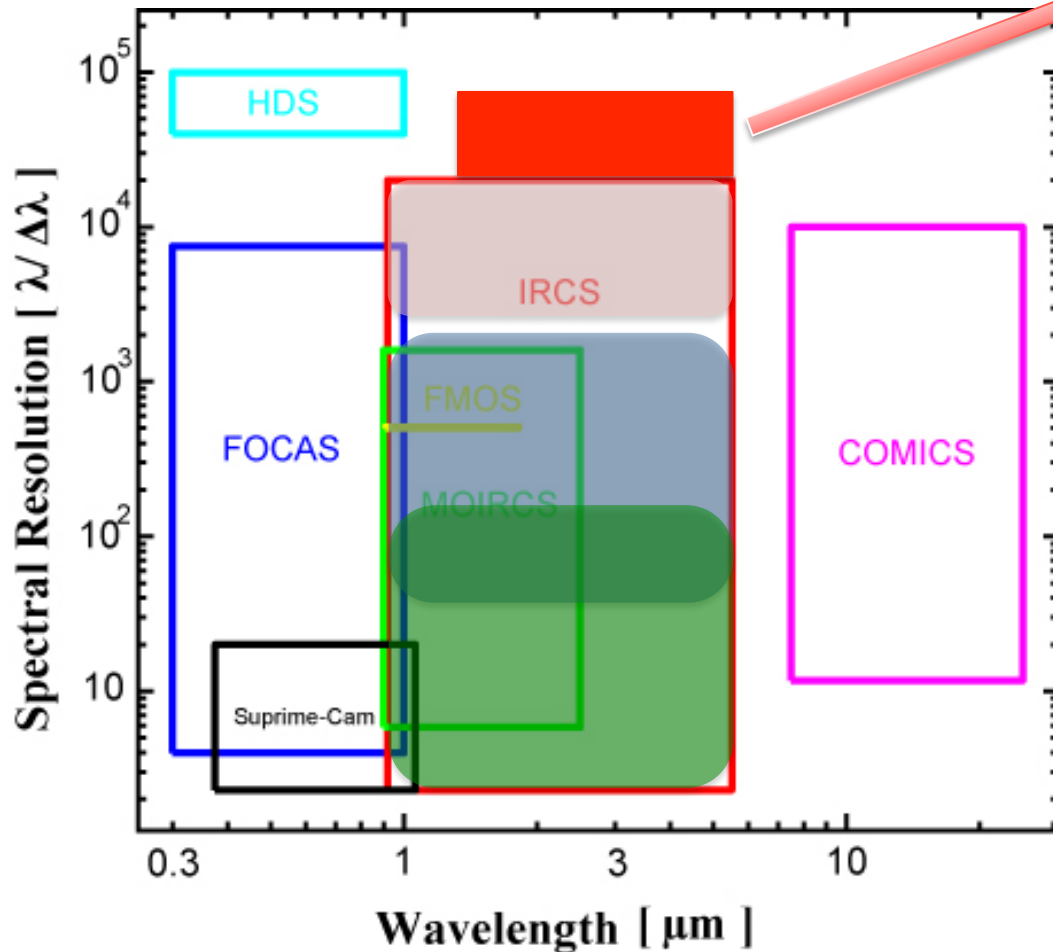


AO188

IRCS@Ns



Subaru IRCS: Toward Higher Resolution



New feature
R~70,000

✓ Echelle Spectroscopy
0.9-5.5μm; R=5,000-20,000
(32mas, 54mas/pix)

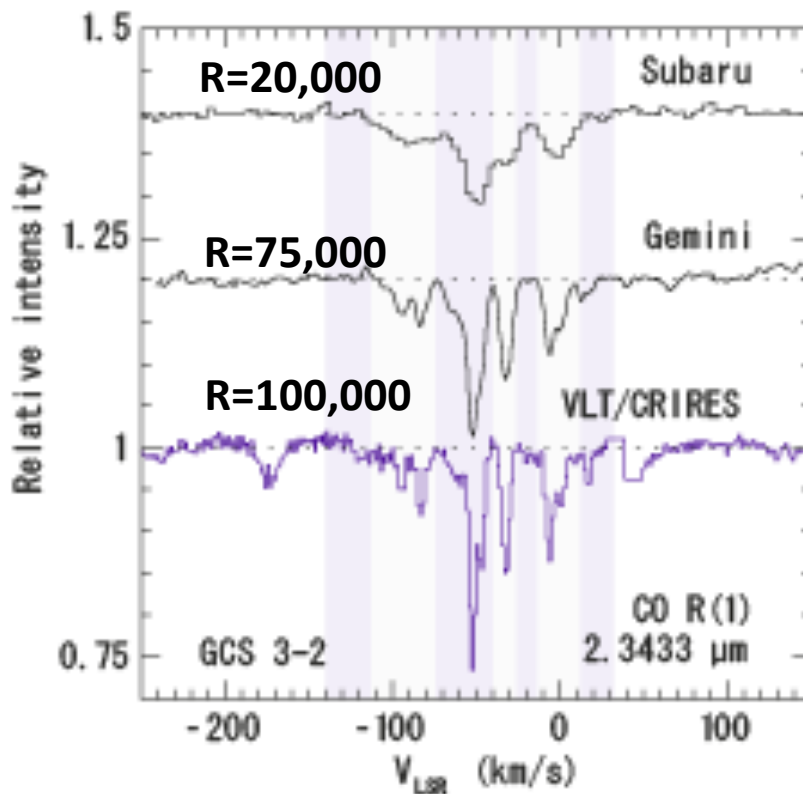
✓ Grism/Prism Spectroscopy
0.9-5.5μm; R=50-2,000
(12mas, 20mas, 52mas/pix)

✓ Imaging
0.9-5.5μm; NBF & BBF
(12mas, 20mas, 52mas/pix)



Infrared High Resolution Spectroscopy: Merits

- ✓ Narrow Emission/Absorption
- ✓ Detailed structure of Velocity component



Goto, M. et al. (2007)

Science Cases

- Terrestrial Planet Search
- Interstellar Medium
- Absorption toward QSOs
- Chemistry in Proplyds
- Jet/Outflow from YSOs
-

*Benefit for
wide variety of astronomy fields*



Infrared High Resolution Spectroscopy: Planet Detection

Lower Mass Stars ⇒
Lower Mass Planet Detection

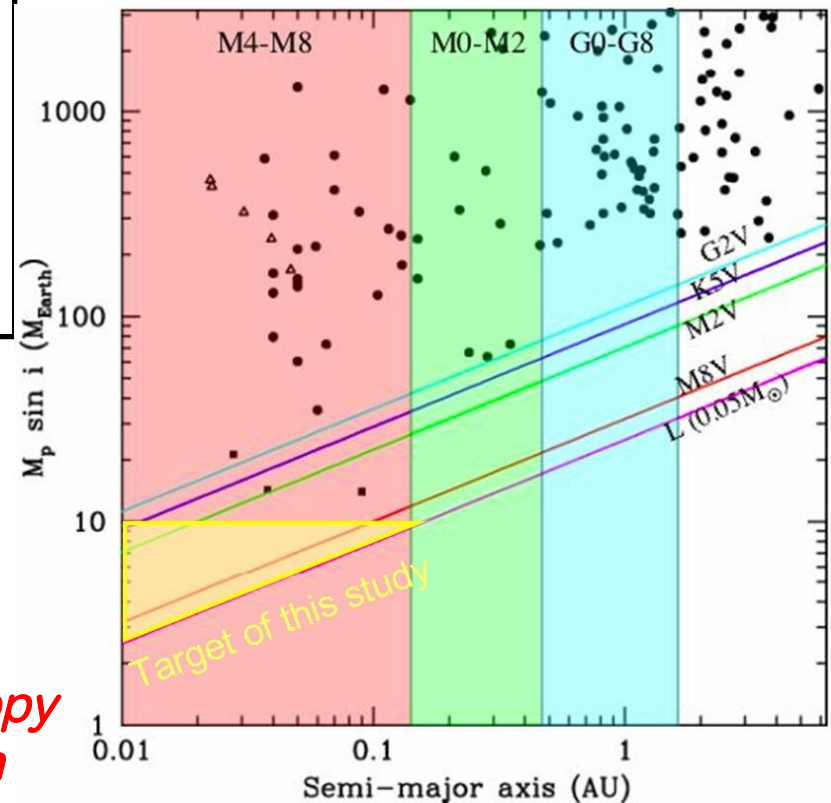
$$K = 28.4 \left(\frac{P}{1 \text{ year}} \right)^{-1/3} \left(\frac{M_p \sin i}{M_J} \right) \left(\frac{M_*}{M_\odot} \right)^{-2/3} \text{ m s}^{-1}$$

“Doppler search” <10m/s
Terrestrial Planet Detection around
M,L-type stars (0.05--0.25 M_{solar})

M,L-type stars:
Faint in Optical, but Bright in IR

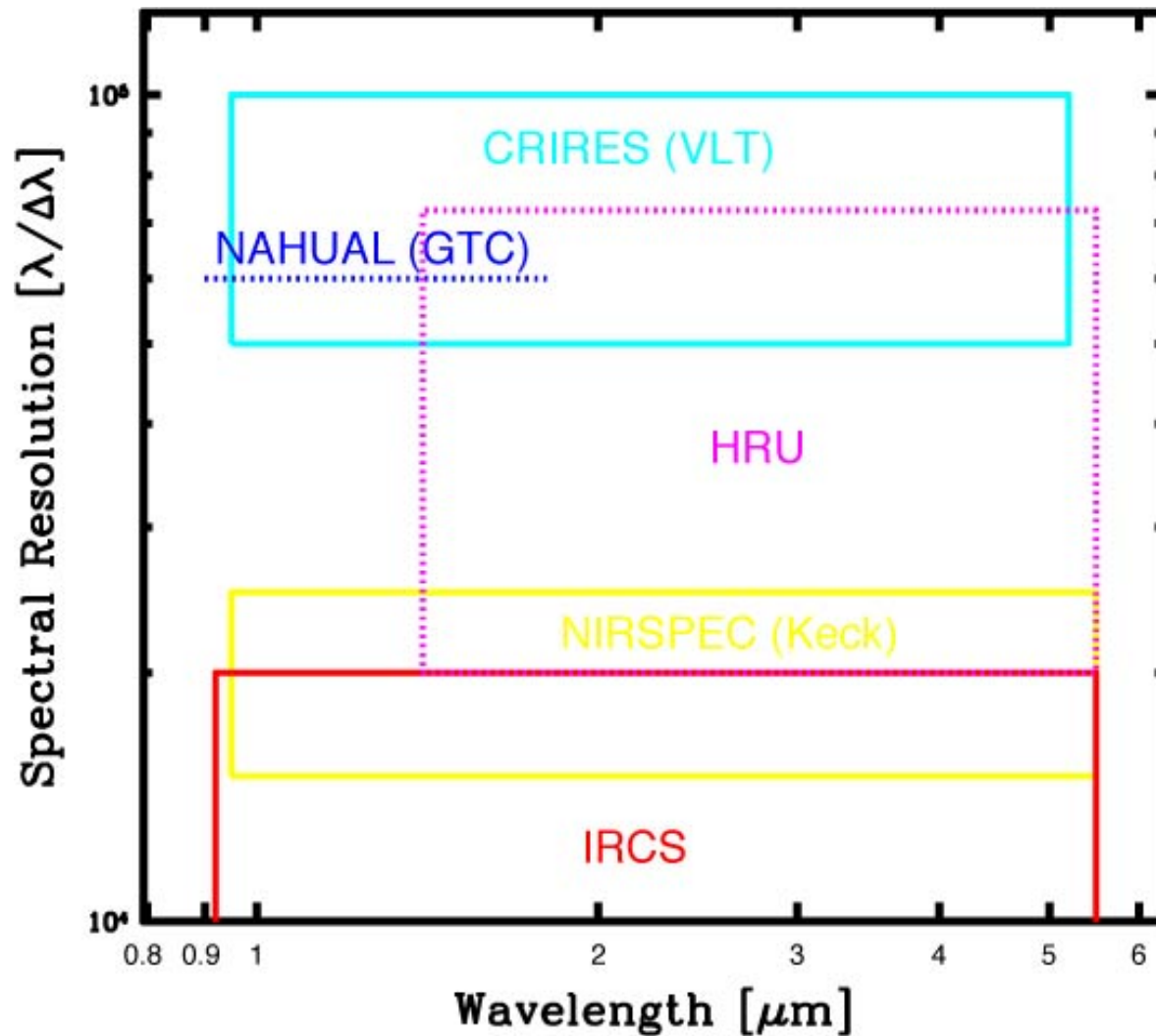


*IR High Resolution ($R \sim 70,000$) Spectroscopy
Essential for Terrestrial Planet Detection*





IR High Resolution Spectroscopy at 8-10m class telescopes

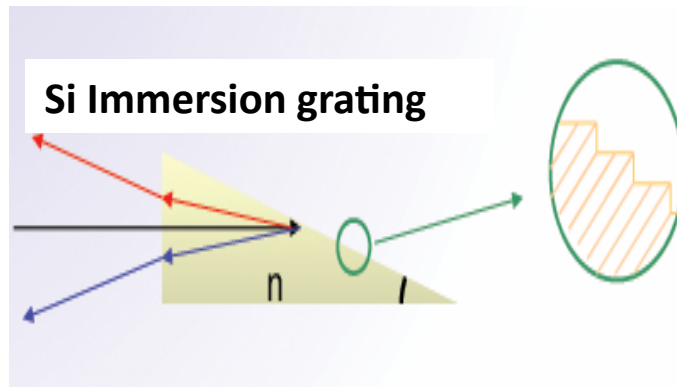


- ✓ **First**
in northern hemisphere
- ✓ **Only one**
with LGS function

*IR High Resolution Spectrograph
At Large telescope /
High sensitivity*



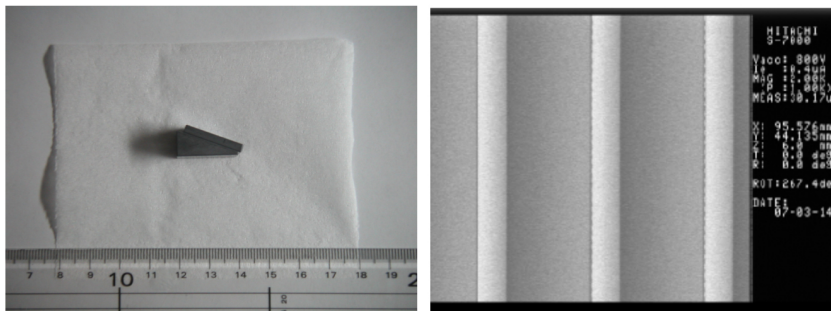
Our Approach: Si Immersion Grating



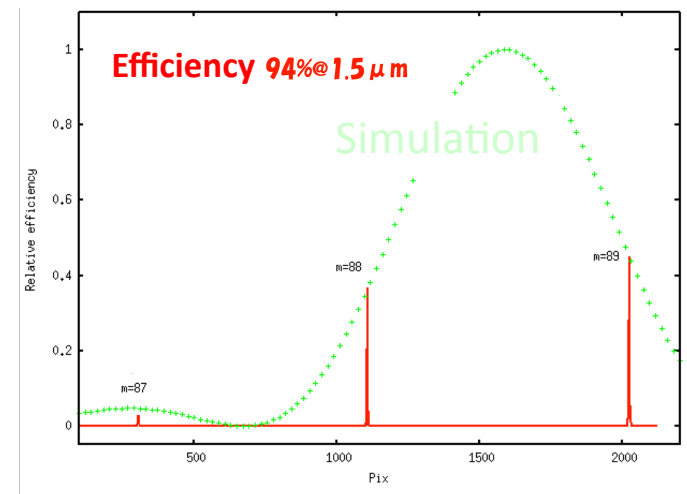
Resolution \propto Refractive index: $(n \sim 3.4)$

*Significantly reduce
Optics (dewar) size
by $1/n$ ($1/3.4$)*

Si Immersion Grating
10mm x 20mm Test Groove



Fabricated by NTT-AT N

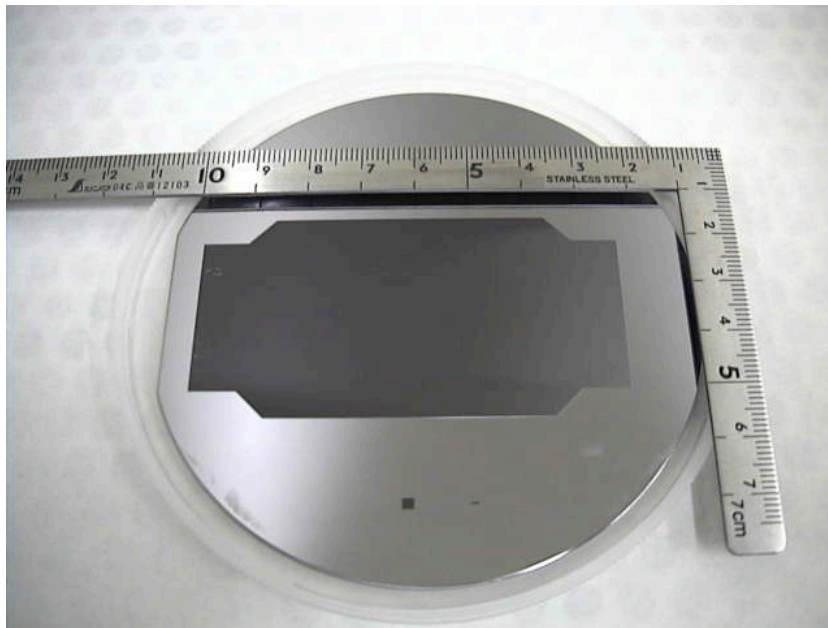


*Achieved the best efficiency
in the world*



Si Immersion Grating Development

Si Immersion grooving
on large area (~40mmx~70mm)



Fabricated by NTT-AT N

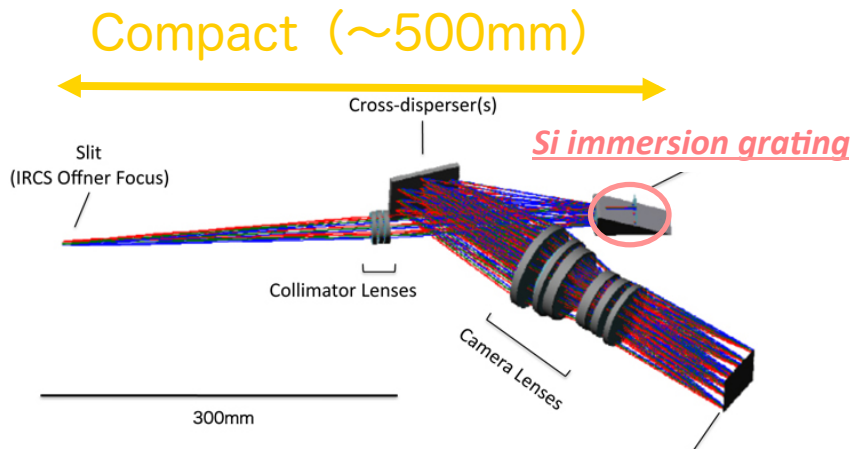
- Si optical contact
 $T \sim 90\%$
- Au coating
on reflective surface
 $R > 90\%$ (1.4-5.5 μm)

*Good total performance
as a grating*

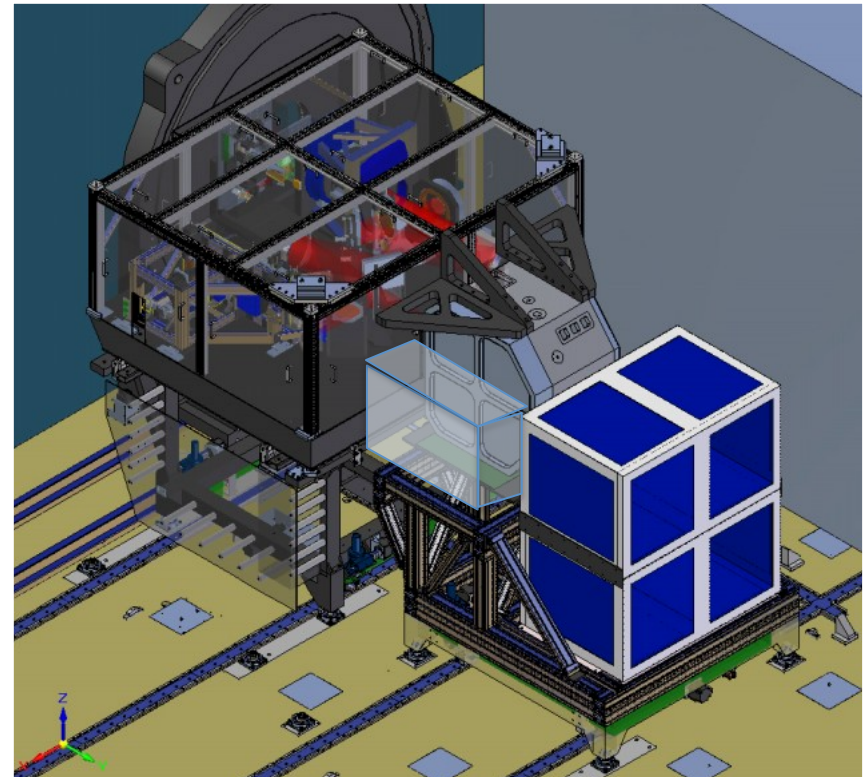
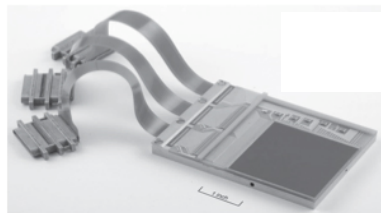
*Good quality also for large area groove
Detailed evaluation ongoing..*



IRCS-HRU Layout



Orion 2kx2k InSb



*Attach onto IRCS -> Prompt commissioning /
Minimum impact on current IRCS*



Instrument Specification

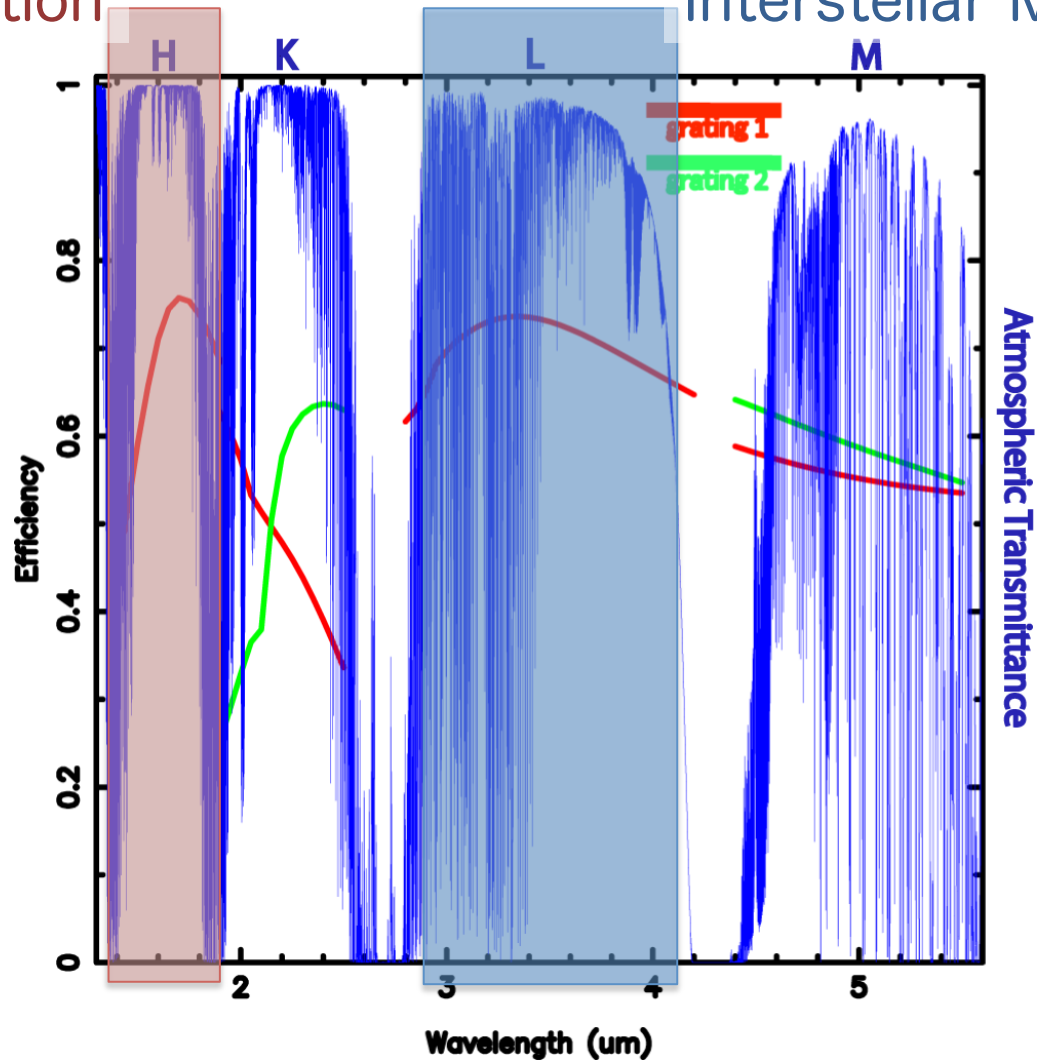
Items	Specifications
Wavelength coverage	1.4—5.5 μm
Resolving power	72,500 @ 2.2 μm
Pixel scale	66—72mas/pixel
Image Quality	Strehl ratio > 0.8 @ 2.2 μm
System Throughput	> 15%
Sensitivity	15.3mag (@K, 1hr exposure, S/N=5)
Velocity accuracy	<10m/s



X-disperser Efficiency

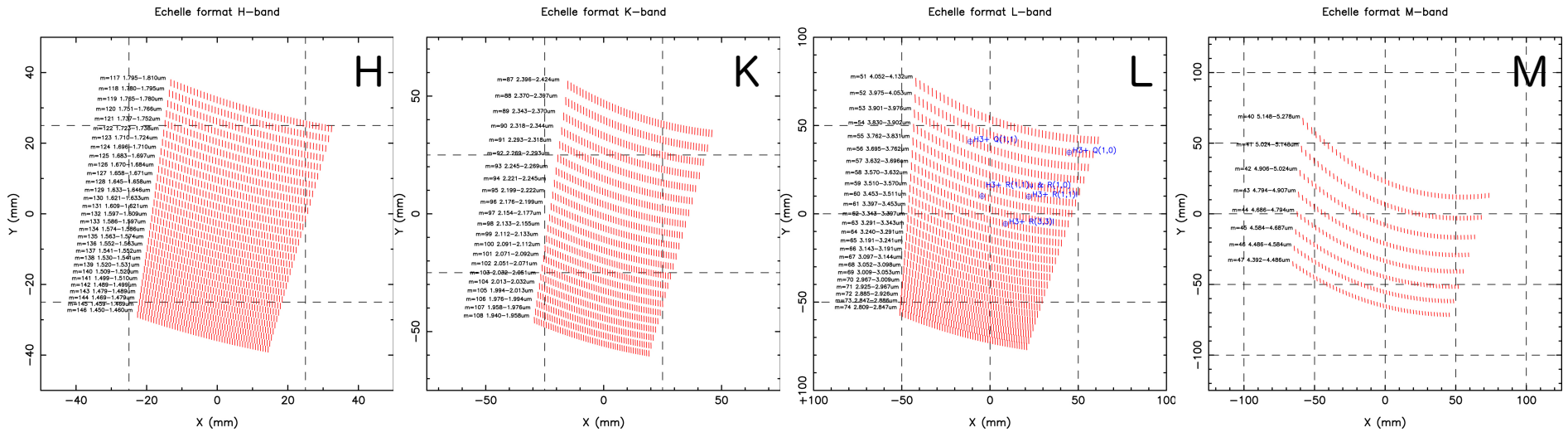
Planet Detection

Interstellar Medium





Echelle format

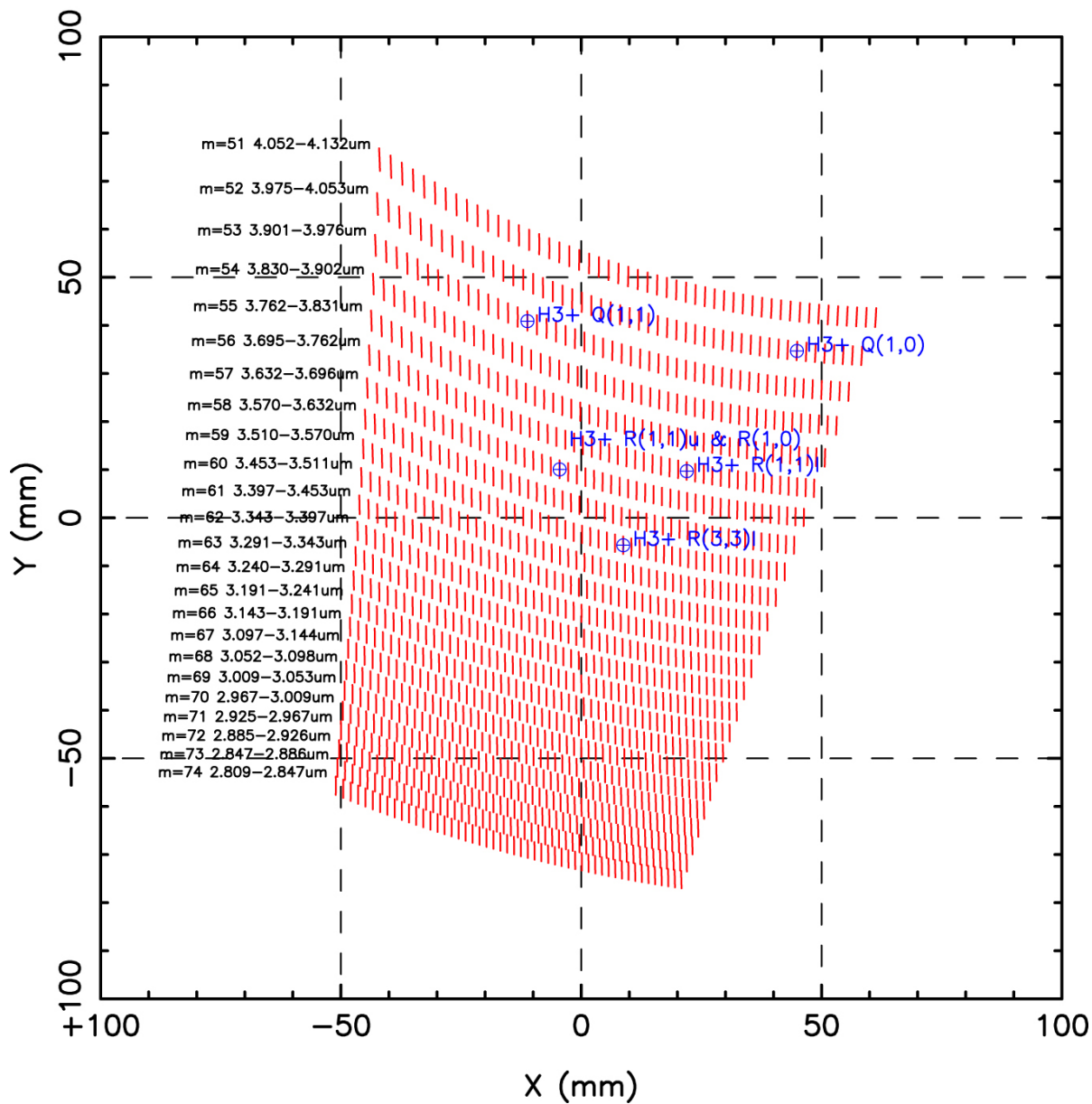


Number of format

BAND	ECHELLE	CROSS-DISPERSER	SUBTOTAL
M	3	3	9
L	3	3	9
K	2	2	4
H	1	2	2
TOTAL			24



Echelle format L-band



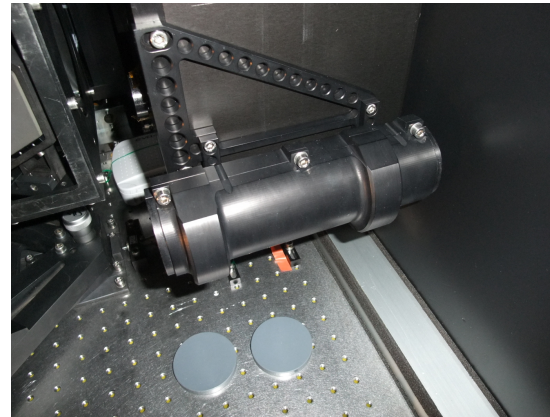


Calibration

1. Infrared Gas Cell (attached at A0188)



NH3 gas cell (IRCS; K-band)



Seifahrt et al.

2. Atmospheric absorption lines

- ✓ Under testing w/ Velocity standard stars (IRCS; H-band)



Schedule

