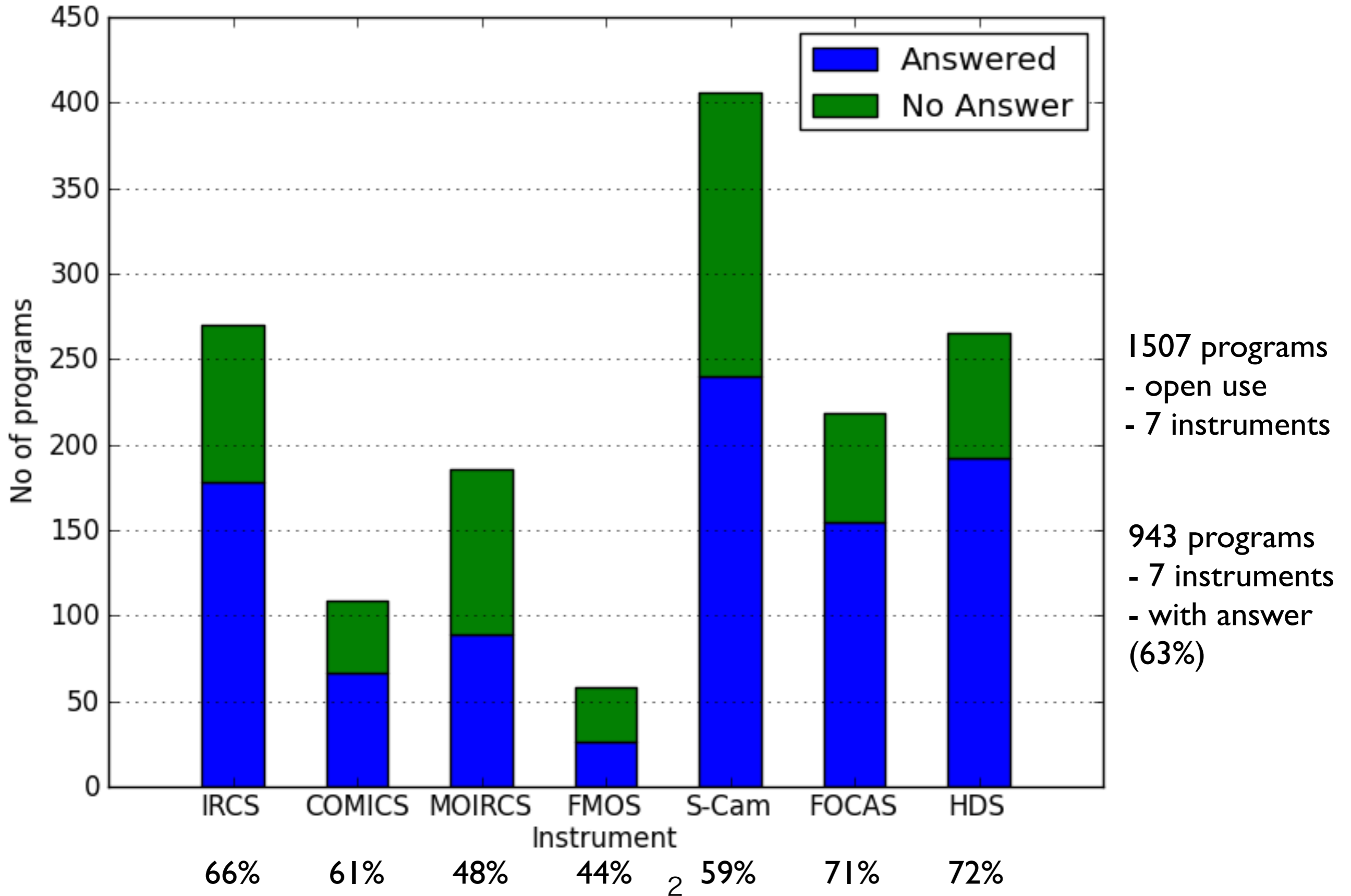


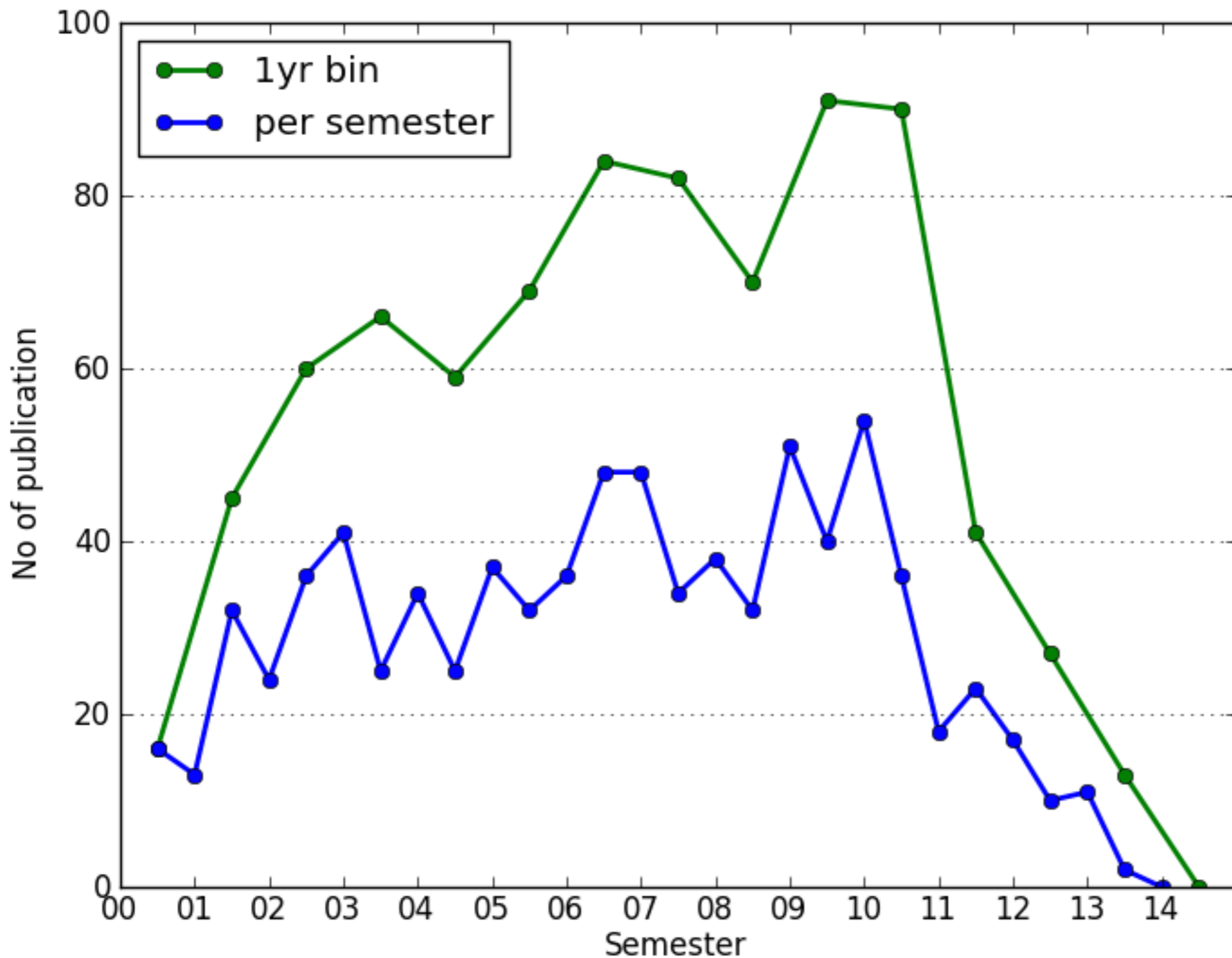
**Output from each Subaru instrument  
- Analysis of Subaru publication survey -**

**Masaomi Tanaka  
2014/11/26  
updated 2014/12/04**

# No of programs



# No of publication



**838** programs  
- open use  
- 7 instruments  
- with answer  
- with data

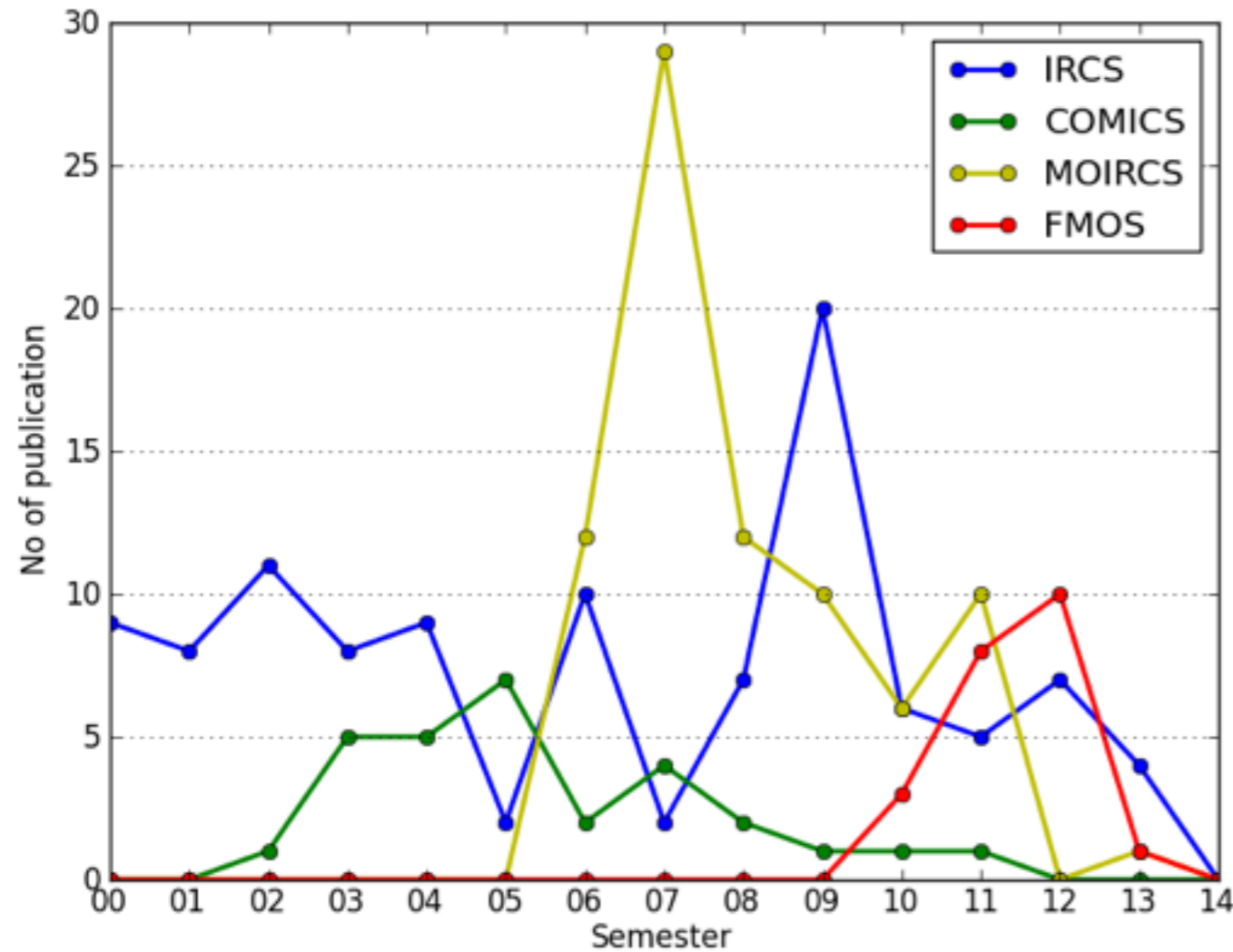
105 programs  
- with no data

813 publication  
(with duplication)

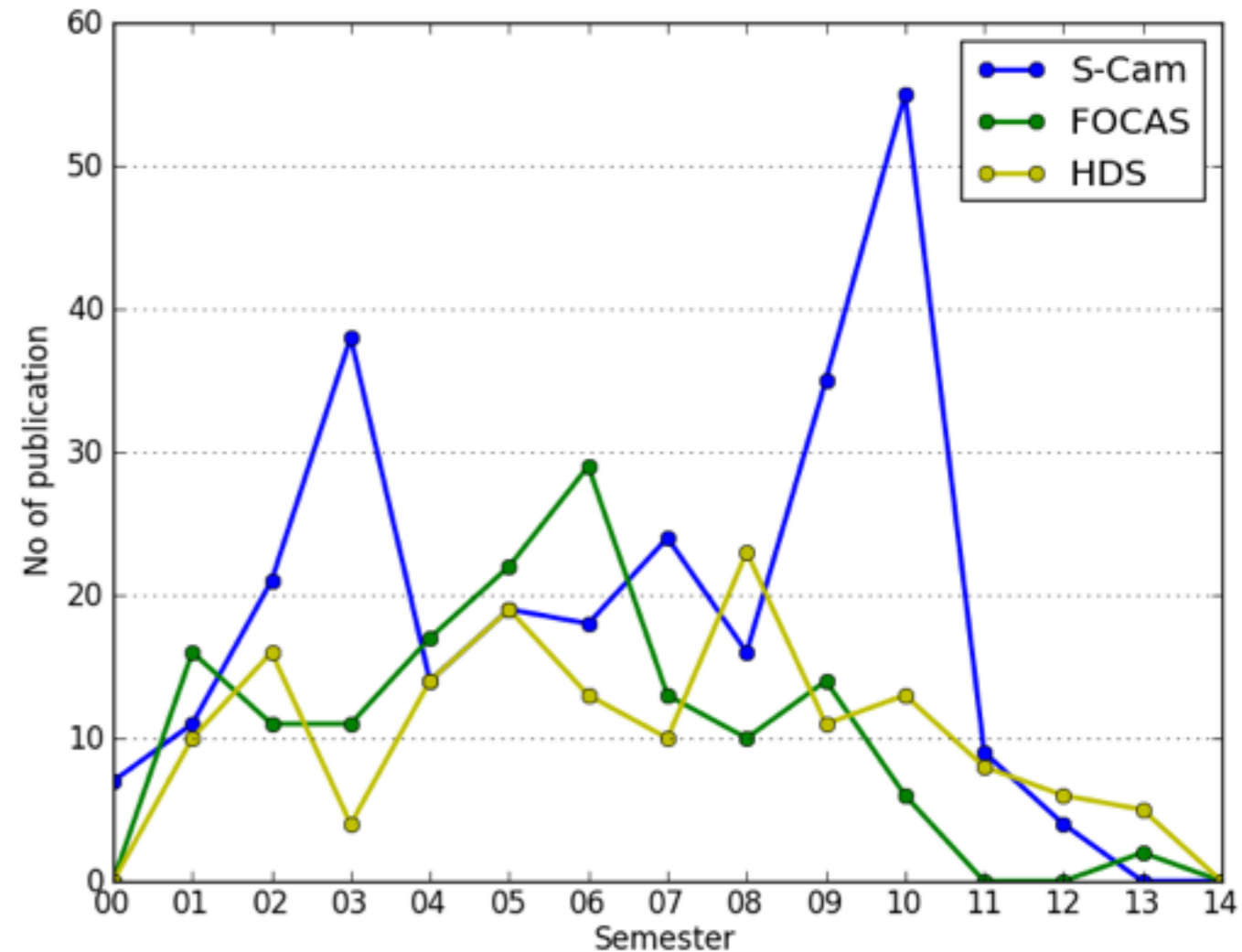
524 publication  
(without duplication)

# No of publication for each instrument (w/ duplication)

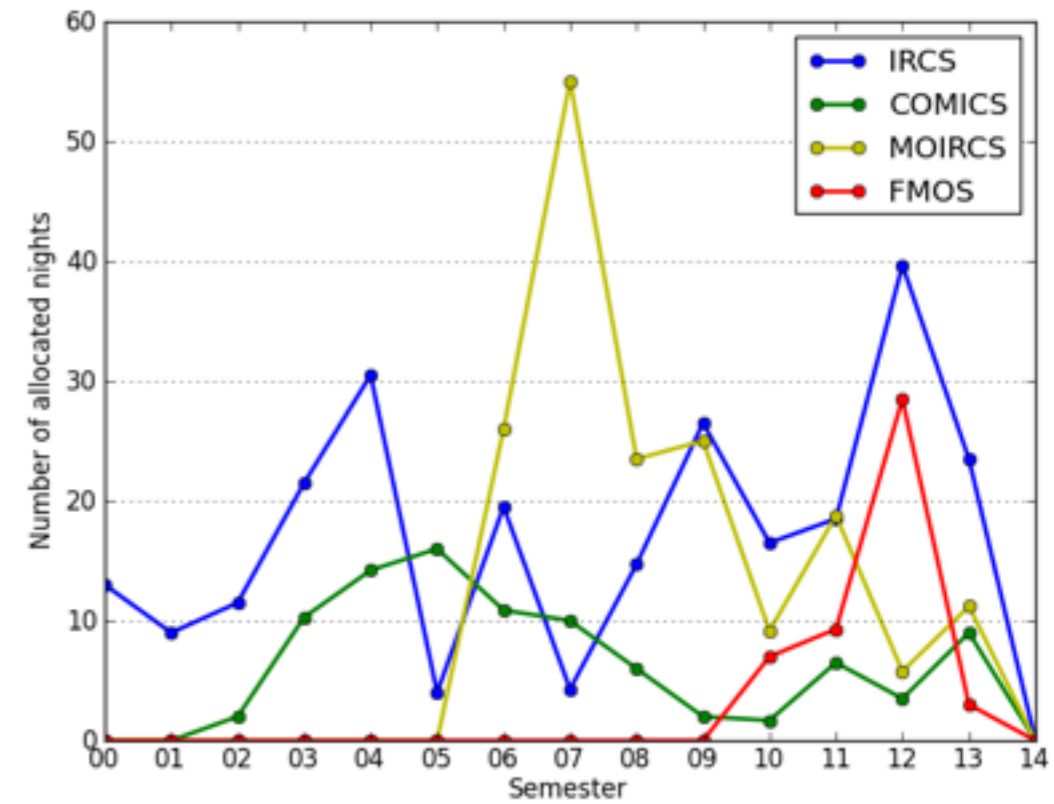
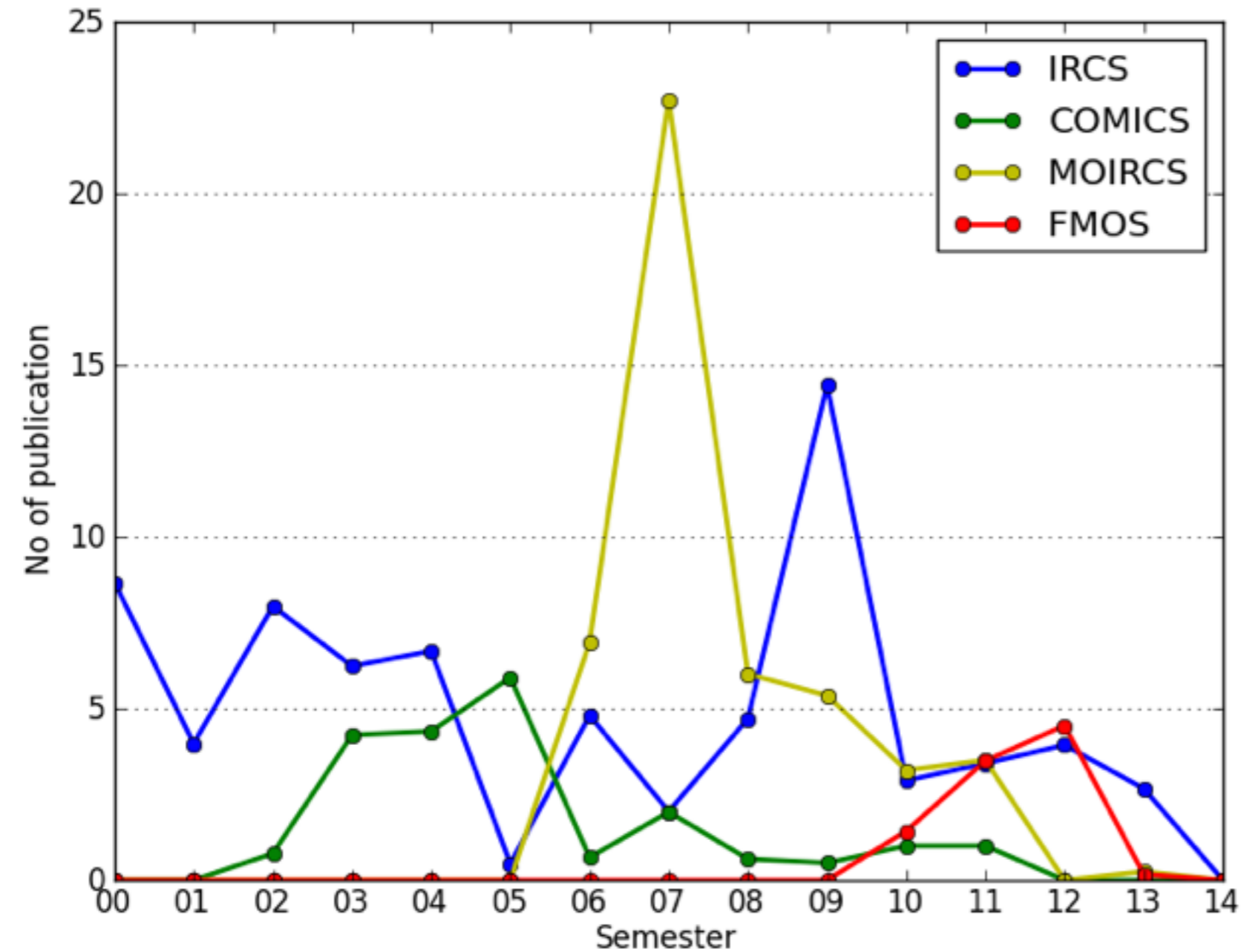
## IR



## Opt

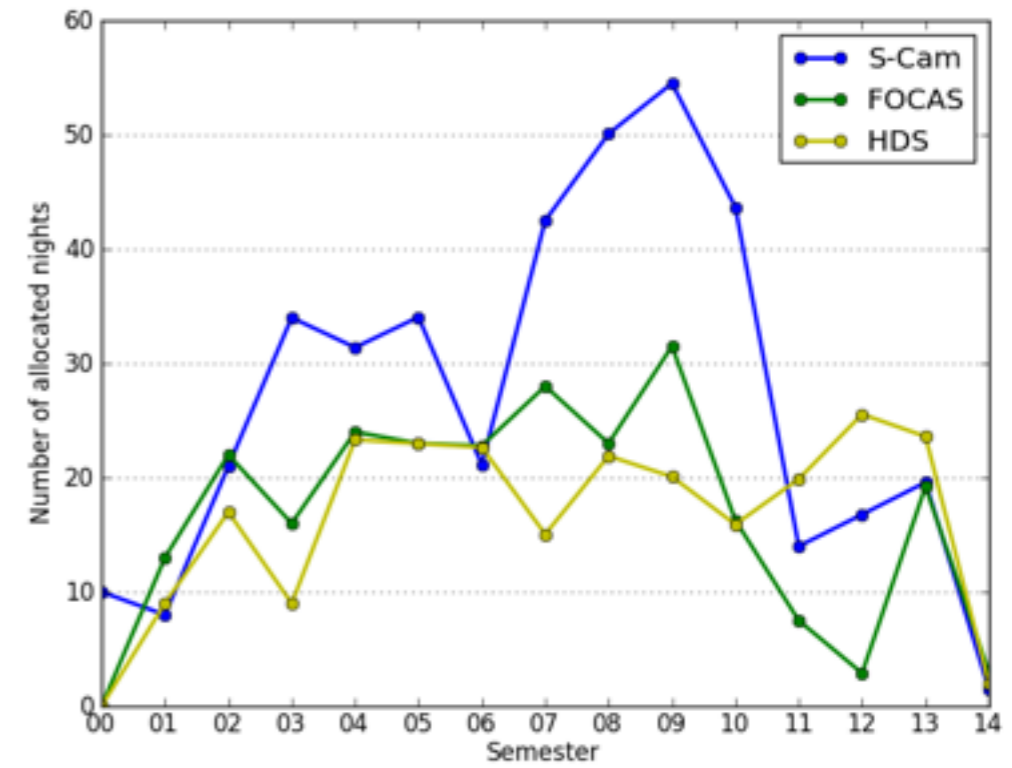
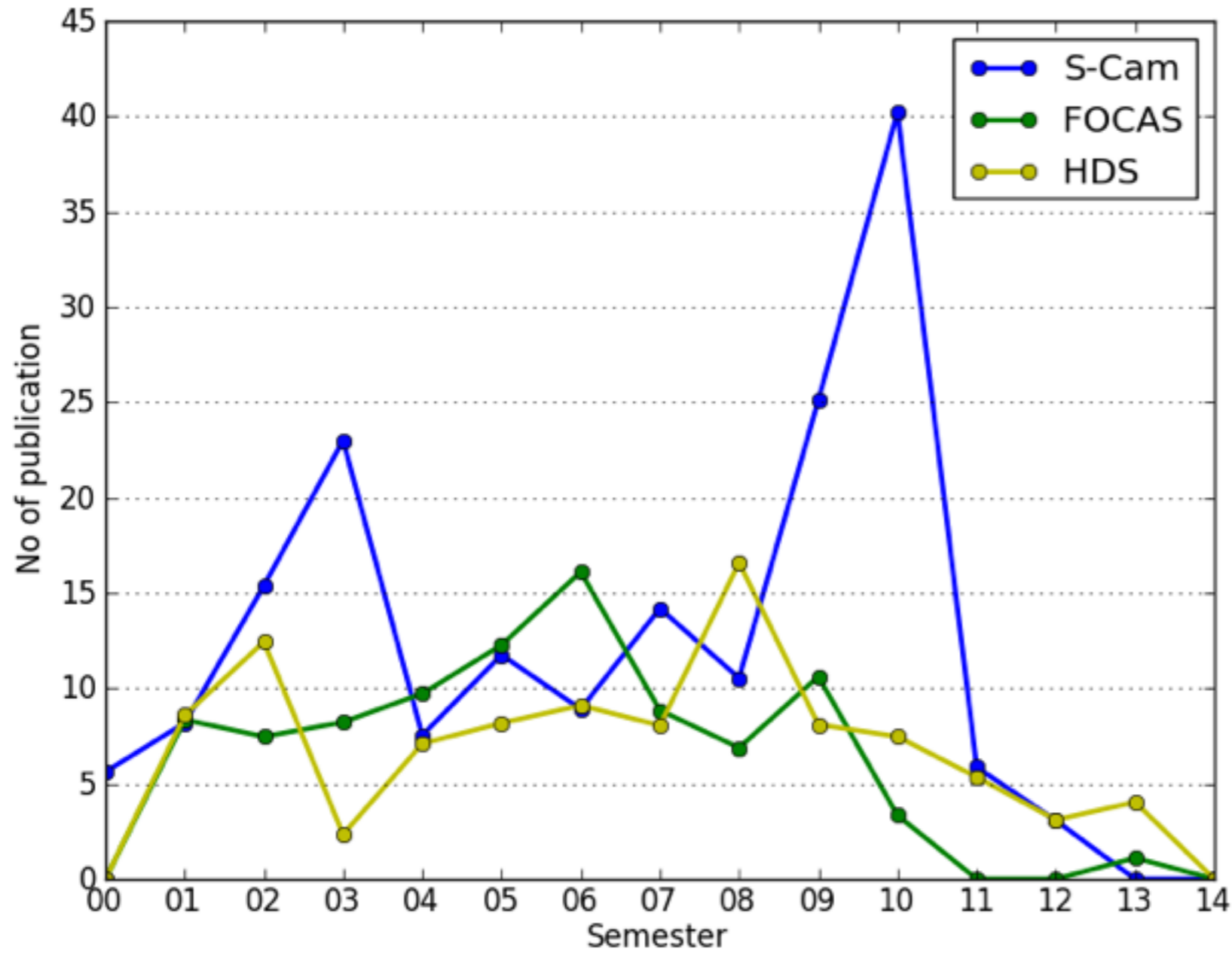


# No of publication: IR instruments (w/o duplication)



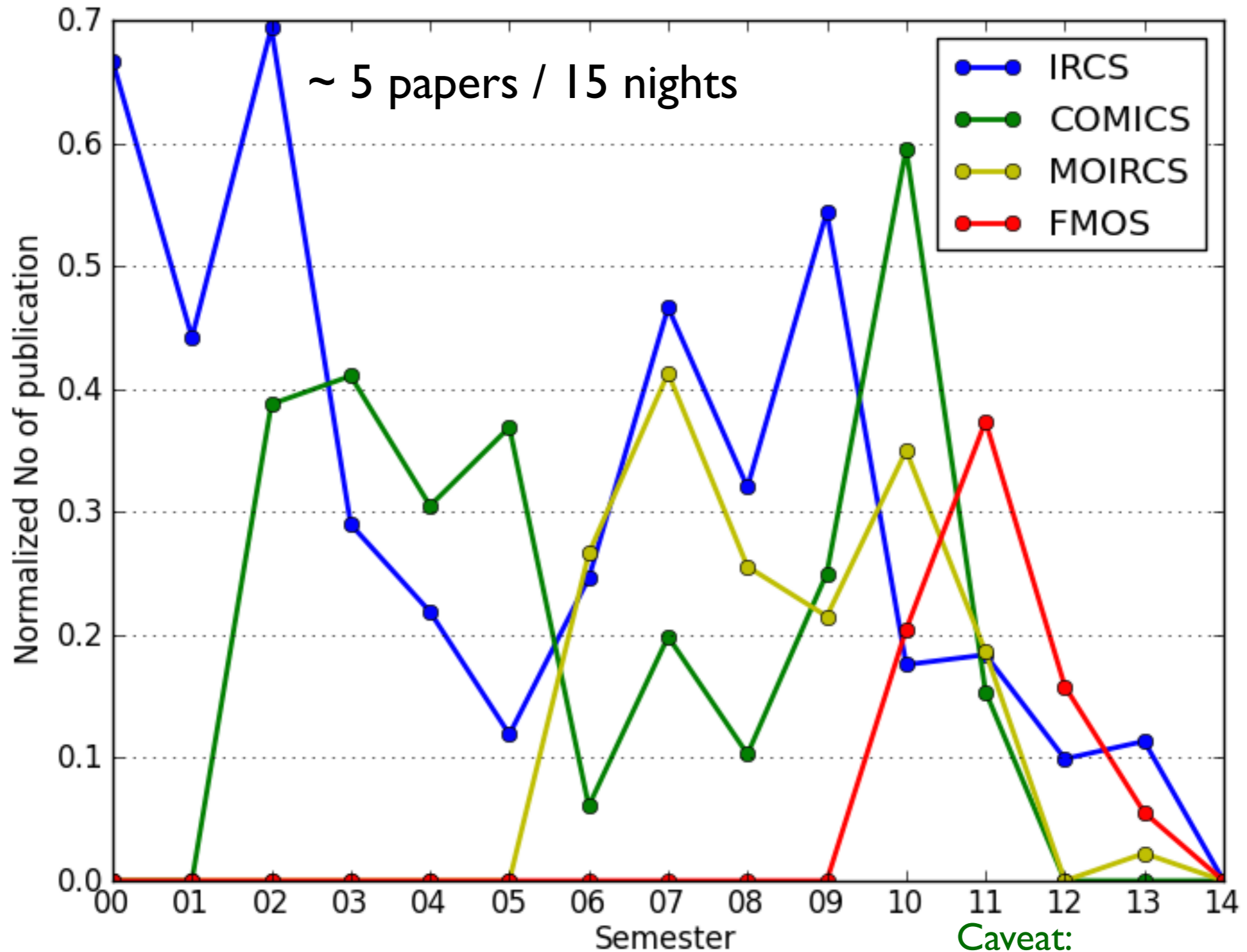
allocation

# No of publication: Opt instruments (w/o duplication)



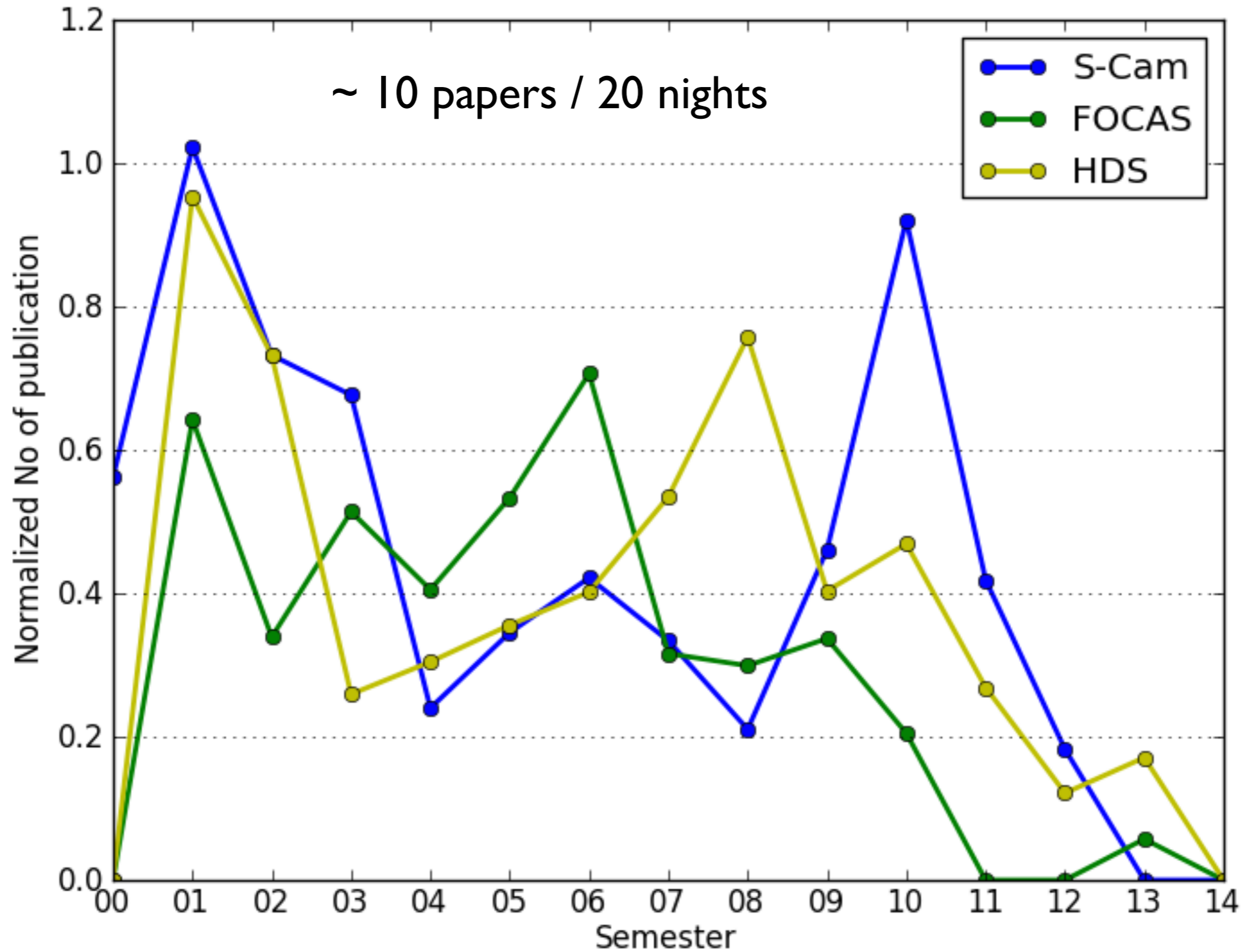
allocation

# Publication/night (IR)

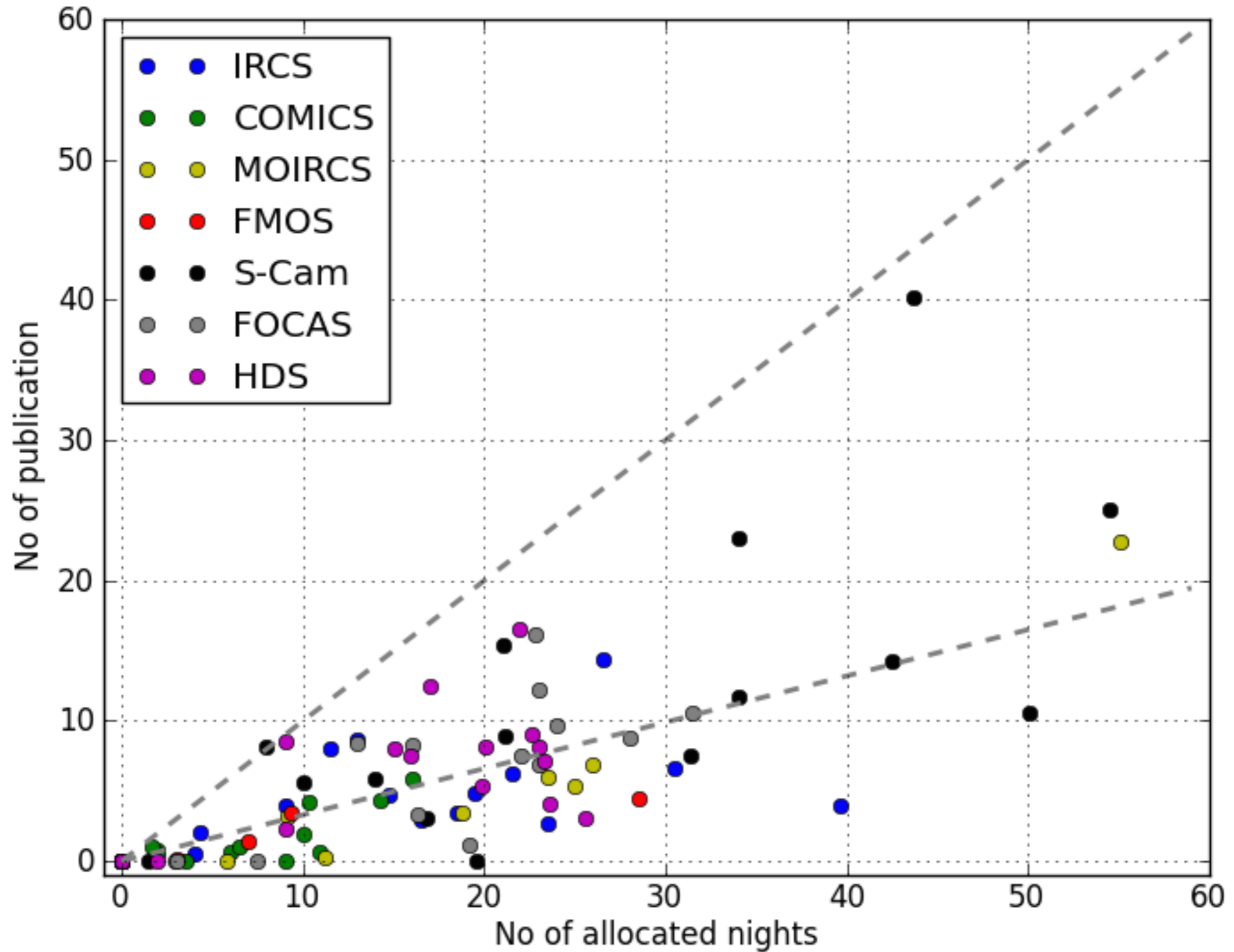


Caveat:  
small statistics for COMICS  
(Publication < 1 after 2008)

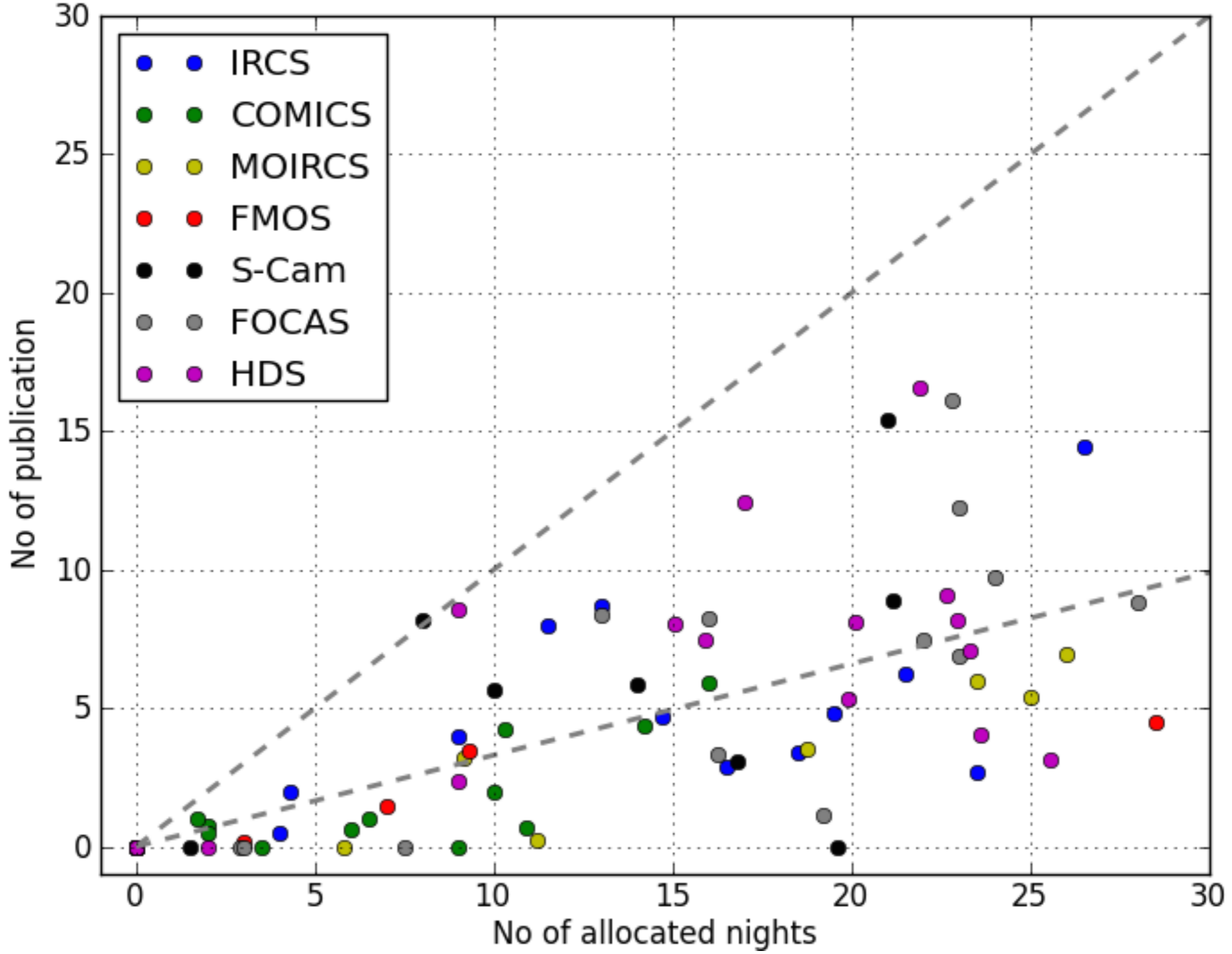
# Publication/night (Opt)



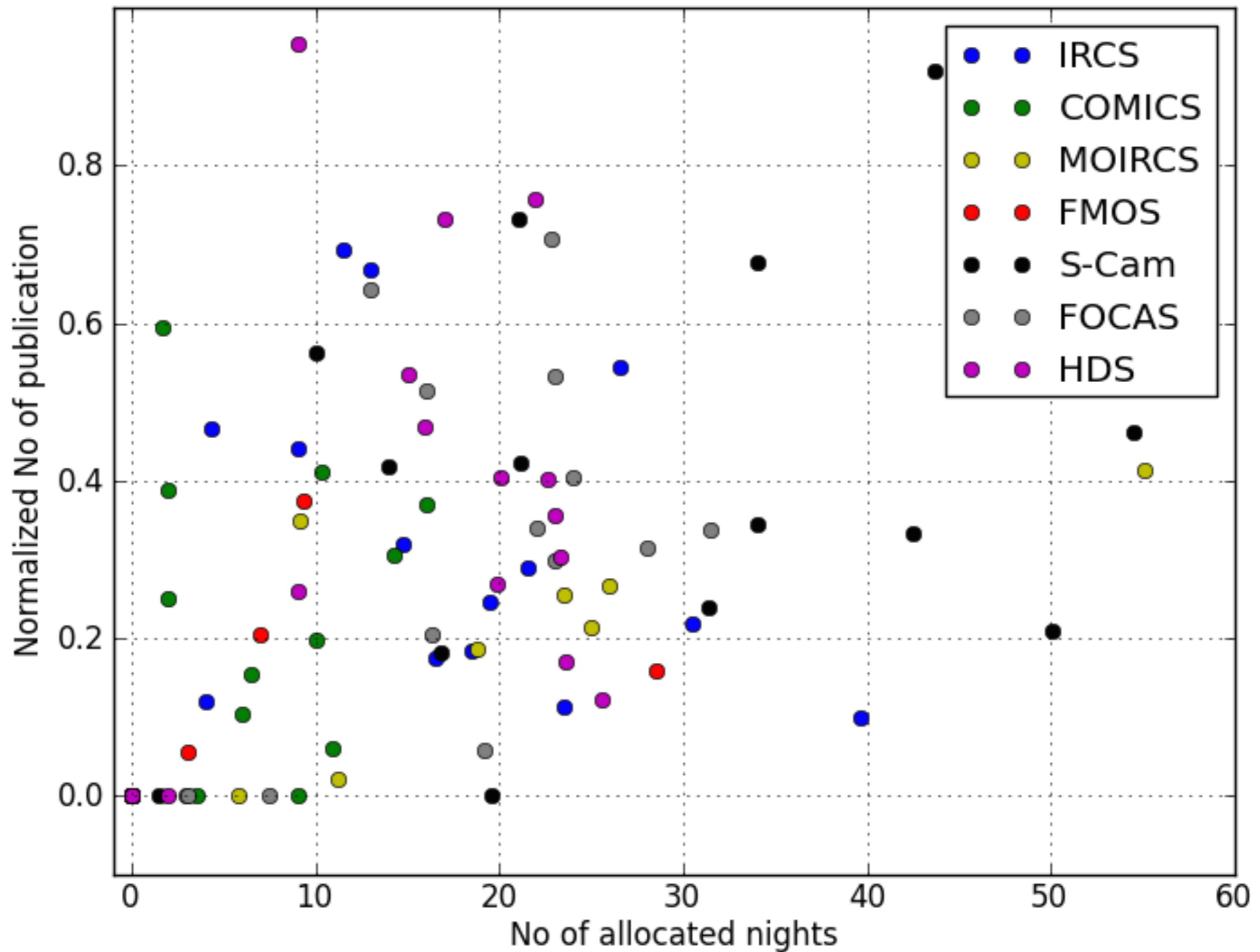
# No of publication vs. allocated nights (for 1 yr)



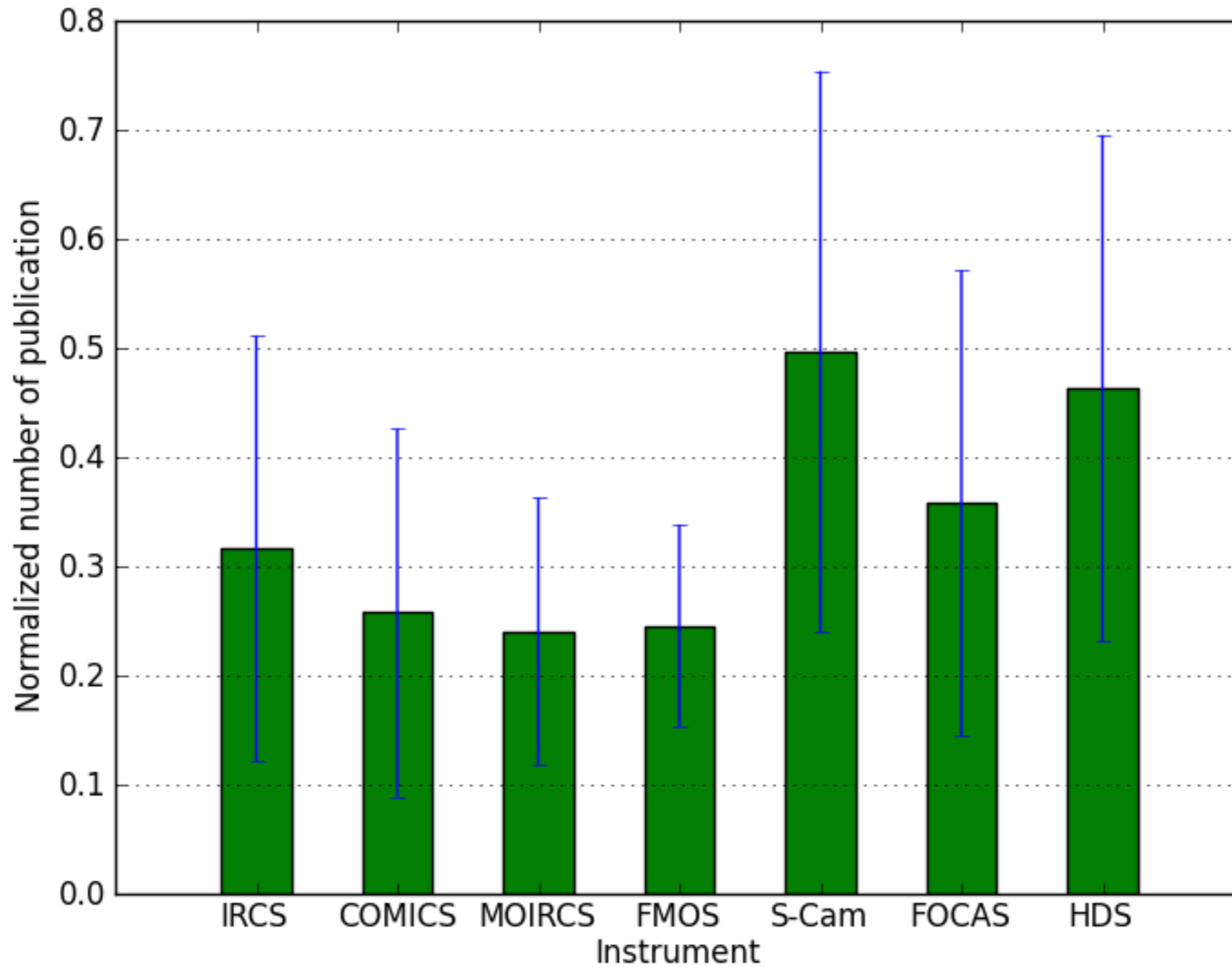
# Publication number vs. allocated nights (zoom)



# Publication/night vs. allocated nights (for 1 yr )



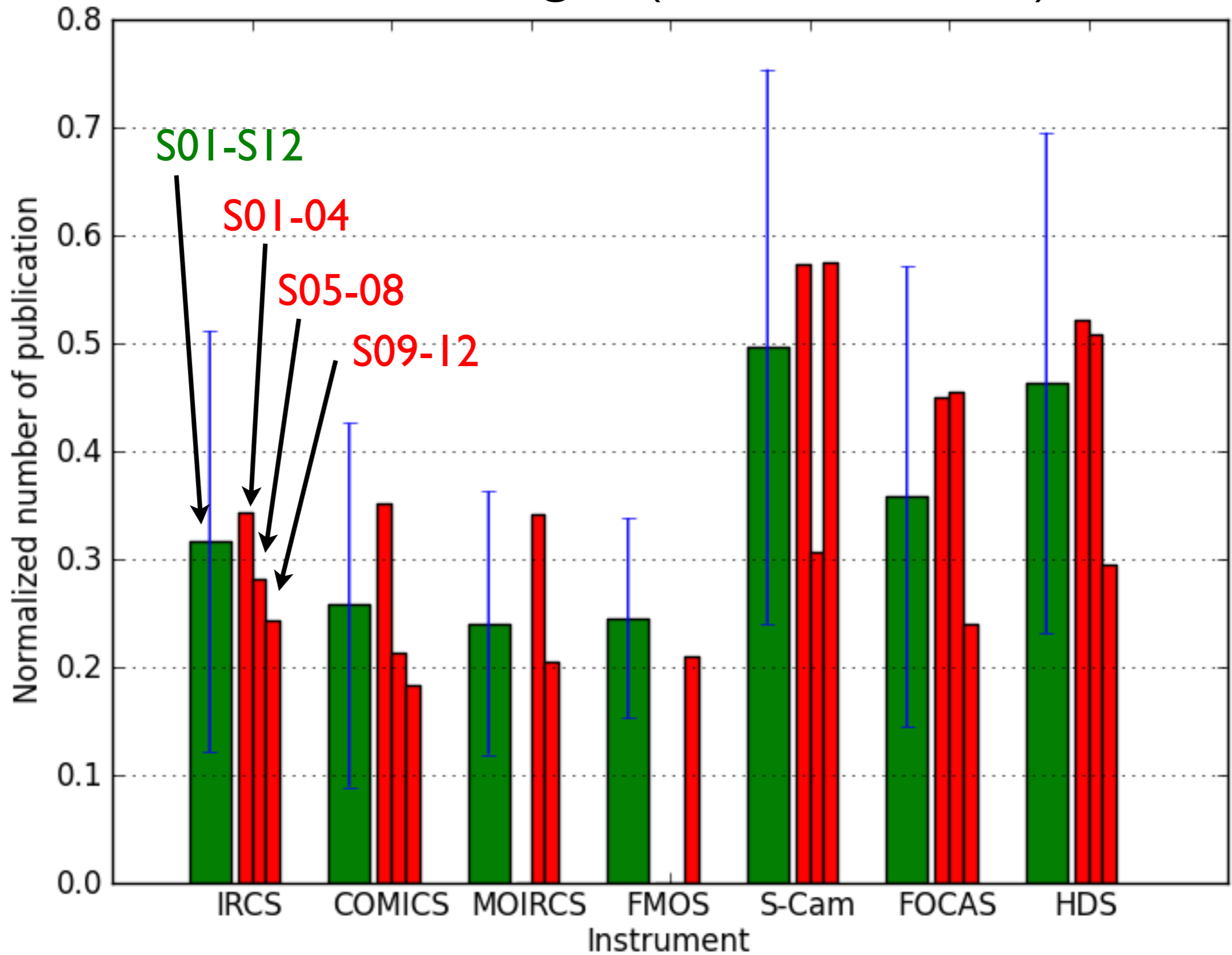
# Publication/night (S01-S12)



IR: ~ 5 papers / 15 nights

Opt: ~ 10 papers / 20 nights

# Publication/night (time evolution)



# Summary

- No of publications
  - roughly follows the number of allocated nights
- Publication/night
  - No dramatic difference
  - $IR < Opt$
  - gradually decreases with time (slower for optical?)
- To do
  - Citation survey