

TAC Report S24B & S25A

Makoto Uemura (Hiroshima University)
on behalf of TAC13

Special Thanks to Hatsue Uekiyo for data collection and plotting.

TAC13

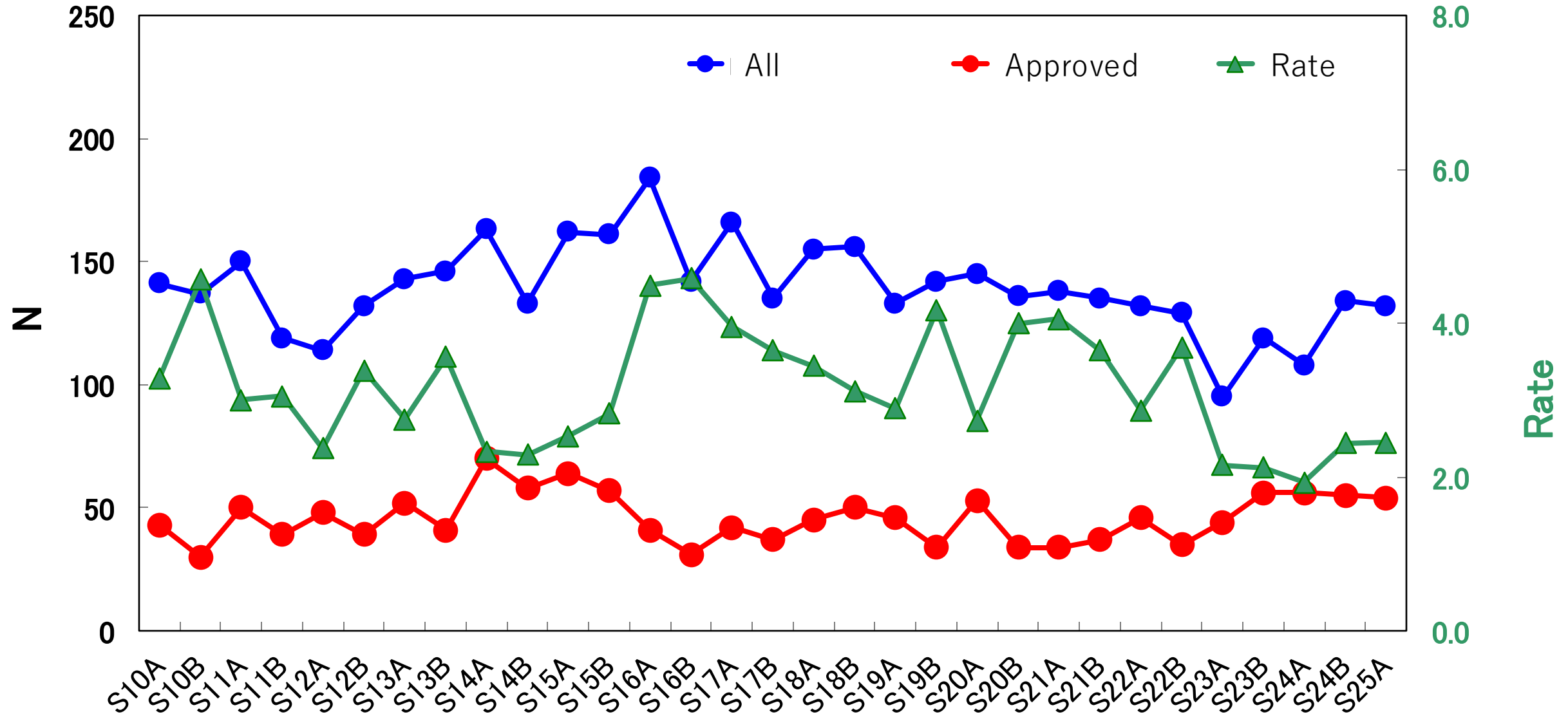
- August 2023 (S24A) --- July 2025 (S25B)
- Members
 - Makoto Uemura (Chair; Hiroshima University)
 - Fumi Egusa (University of Tokyo)
 - Hironao Miyatake (Nagoya University)
 - Keiichi Maeda (Kyoto University)
 - Kohei Ichikawa (Waseda University)
 - Miho Ishigaki (NAOJ)
 - Noriyuki Matsunaga (University of Tokyo)
 - Ryou Ohsawa (NAOJ)
 - Takayuki Muto (Kogakuin University)
 - Teruyuki Hirano (ABC)
 - Yoshiaki Ono (University of Tokyo)

S25A (& S24B) Summary

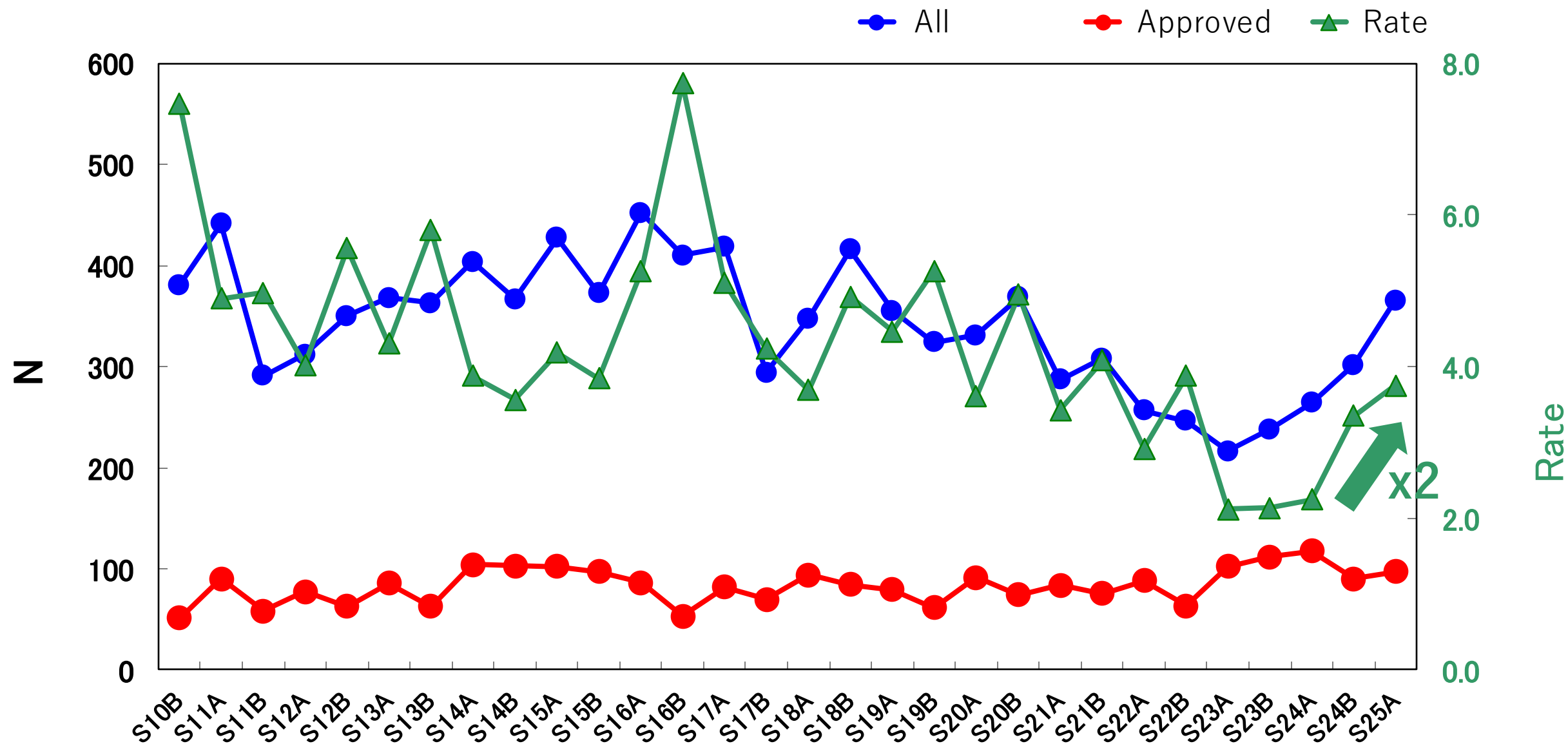
- Submitted proposals: 132 (134)
 - including 3 (1) intensive program
- Approved proposals: 54 (55)
 - including 1 (1) intensive program
- Oversubscription rate: 2.4 (2.4)

- Night requested: 365.5 (301.6)
- Night approved: 97.40 (89.95)
 - New intensive: 5 (1.3)
 - Continuing intensive: 9.8 (6)
- Oversubscription rate: 3.8 (3.4)

The number of proposals in S10A–S25A



Night basis (S10A–S25A)

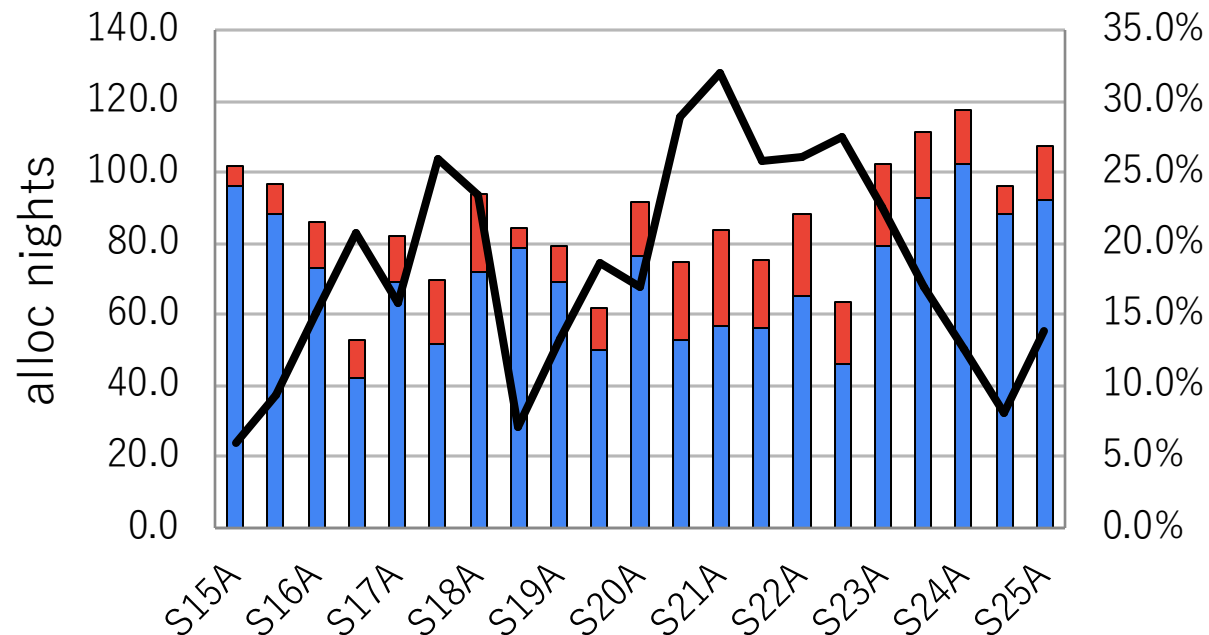


Intensive programs

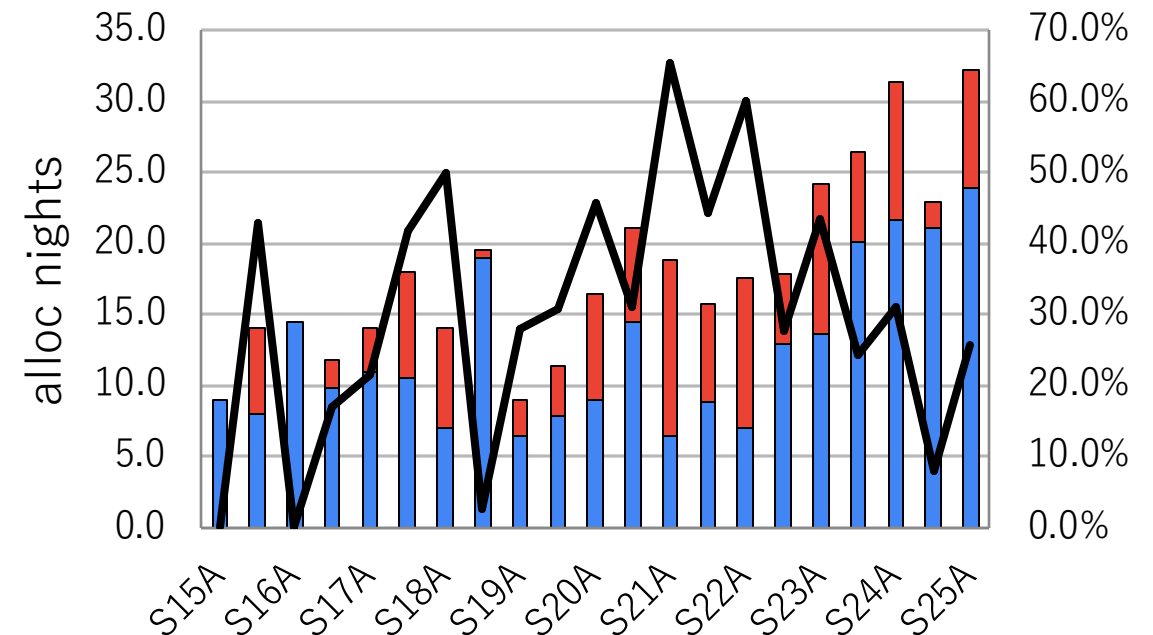
- Continuing : S24A023I (Currie) 6n (S24B)
- **New : S24B080QI (Osato) / 10.6n (total)**
- **New : S25A0047QI(Momose) / 16.4n (total)**

Balance between Normal and Intensive programs

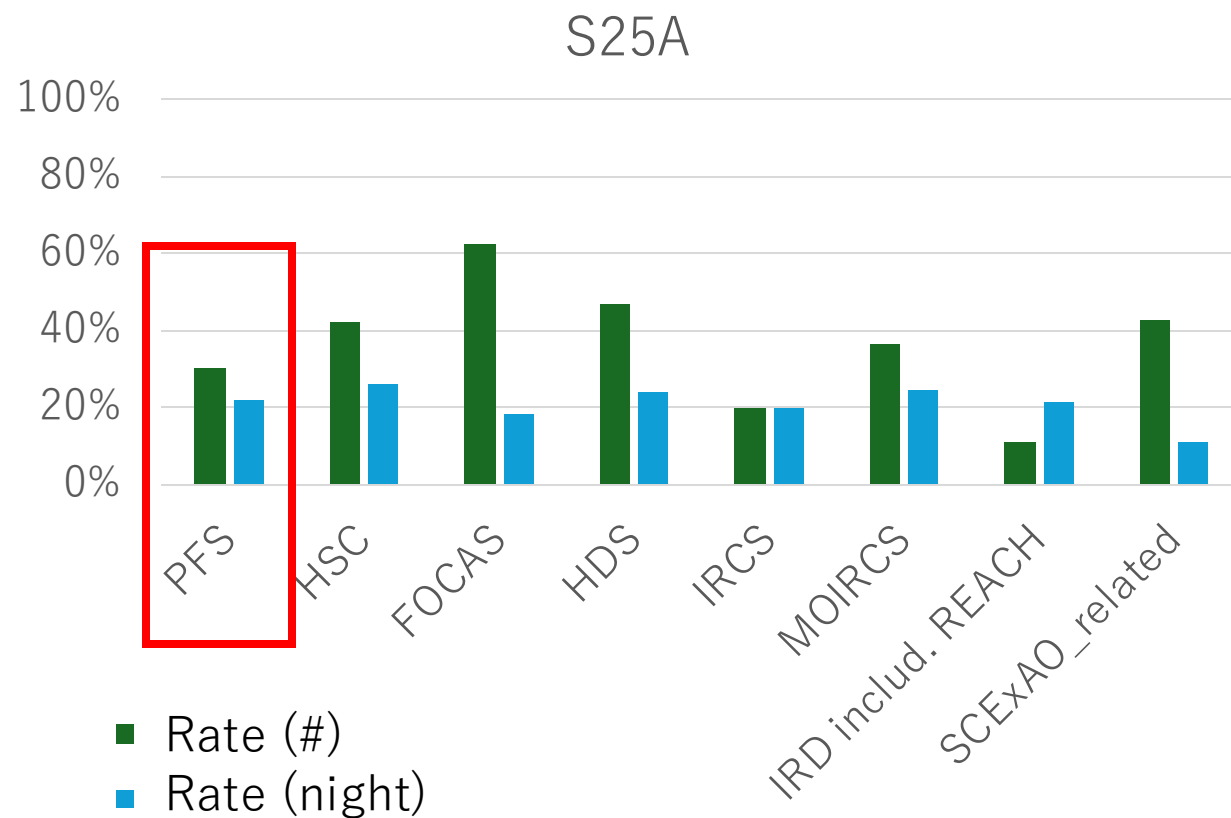
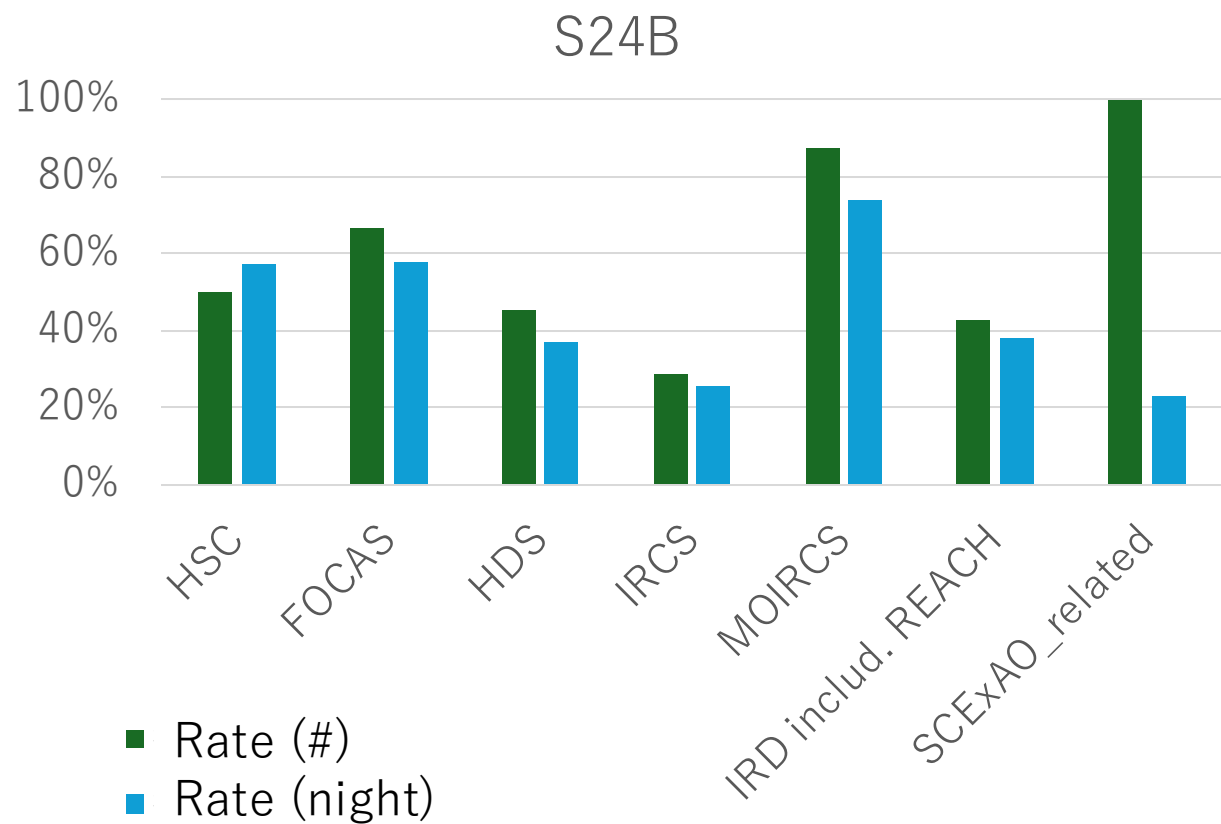
All Instruments



HSC

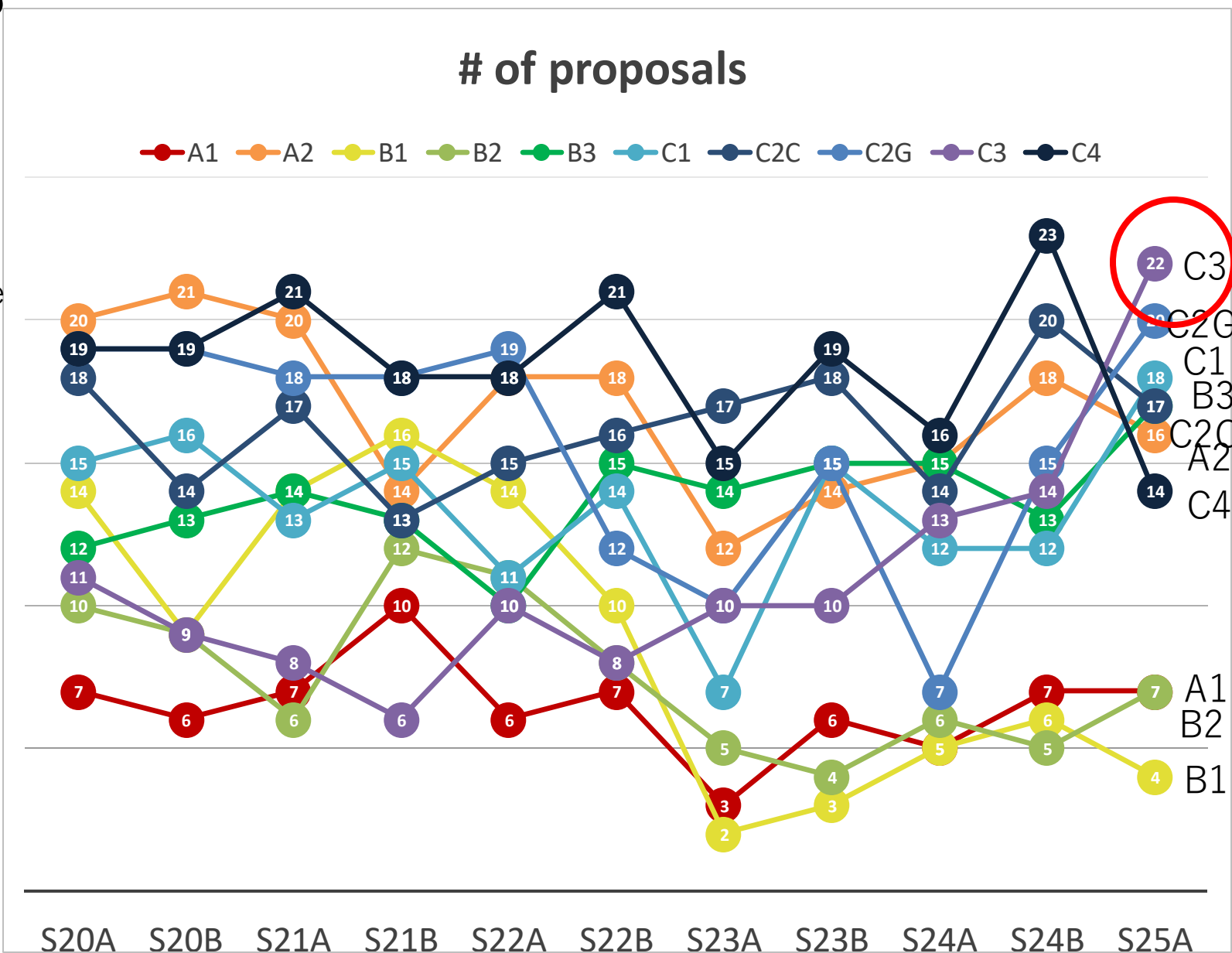


Success rate: Instrument basis



Science categories

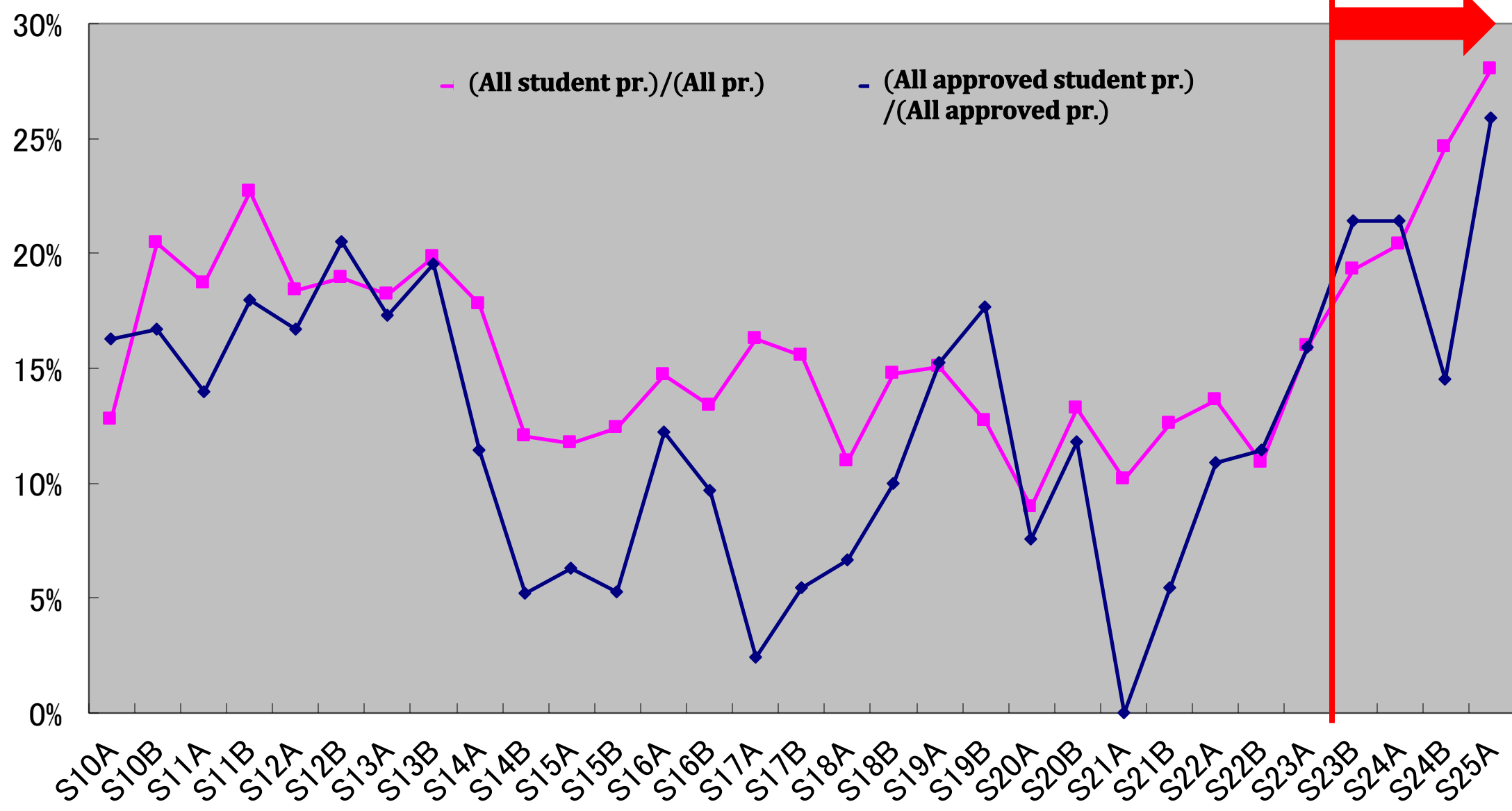
- A1: Solar system
- A2: Extrasolar Planets
- B1: Star Formation and Young Disk, ISM
- B2: Stars and Brown Dwarfs, Stellar Envelope and Activity
- B3: Compact Objects and SNe
- C1: IGM and Abs. Line Systems, Cosmology, Gravitational Lenses, Circumgalactic Medium
- C2C: Clusters and Proto-Clusters, Environmental effect on galaxies
- C2G: High-z Galaxies (LAEs, LBGs), High-z Galaxies (others), Nearby Galaxies
- C3: Milky Way, Local Group, Galactic Archaeology
- C4: AGN and QSO Activity



Student programs

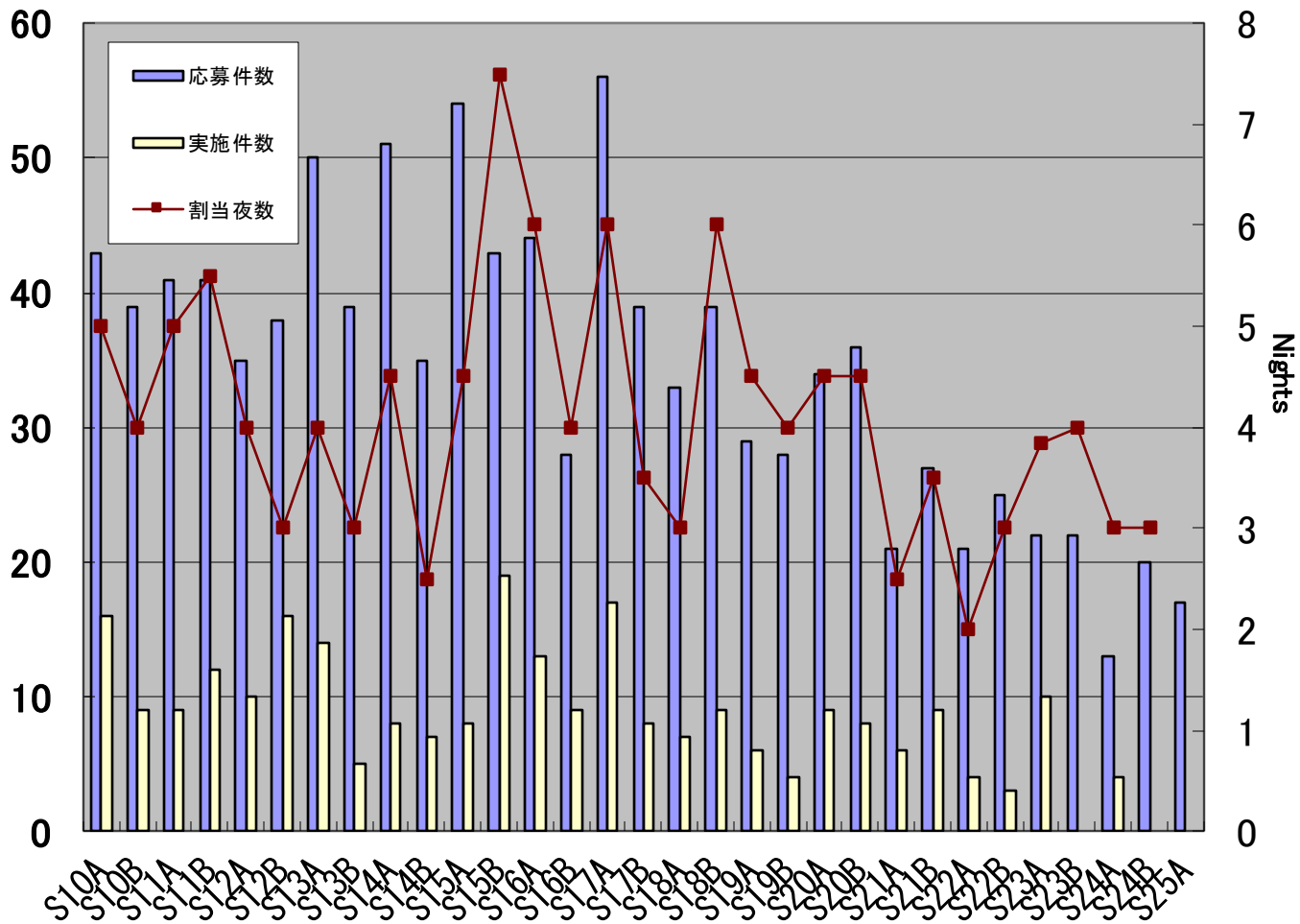
Dual anonymous review

On-site observation support for the student PI proposals

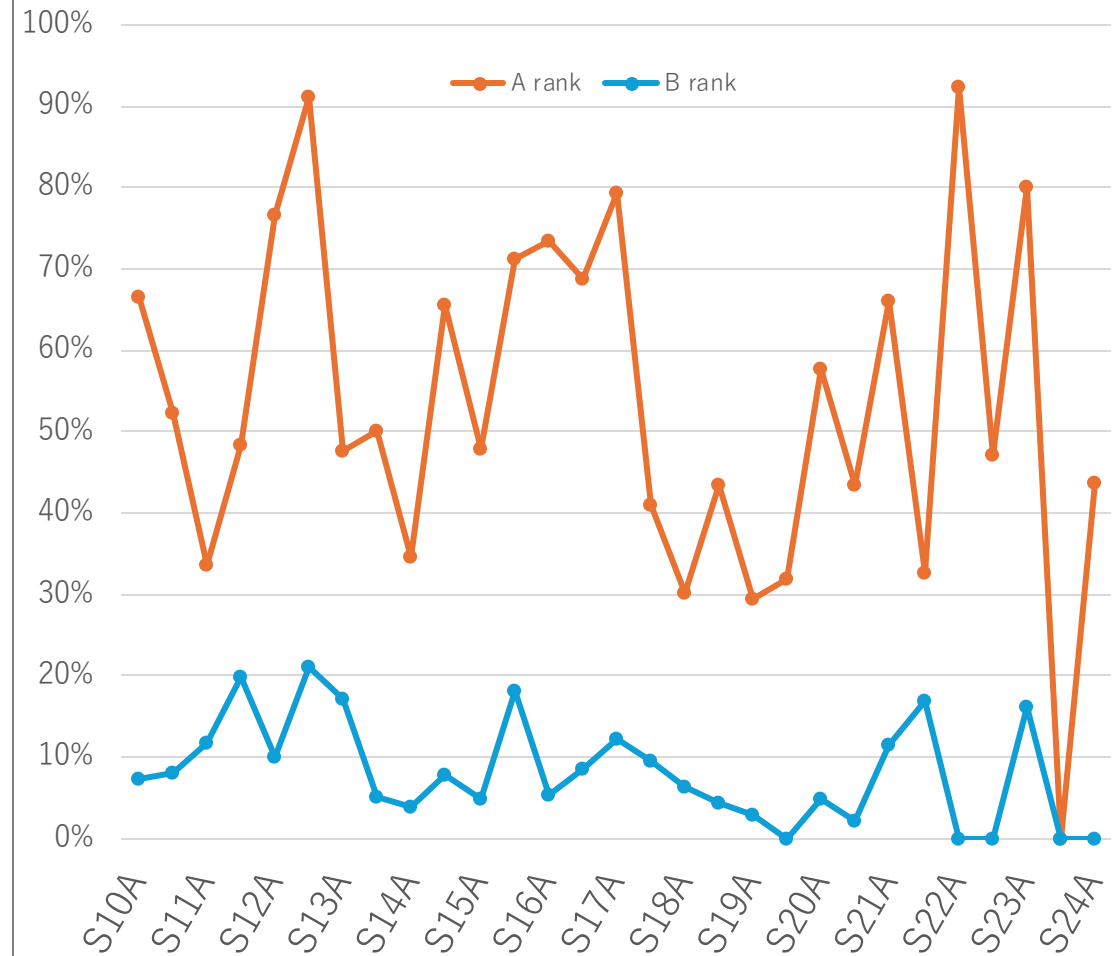


Service programs

of proposals

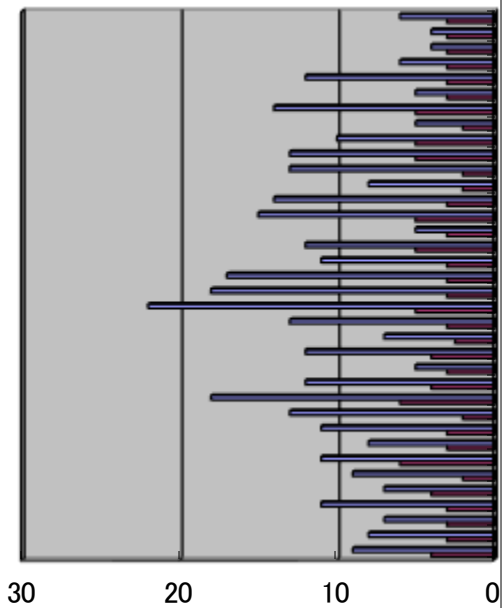


Service Program Completion Rate

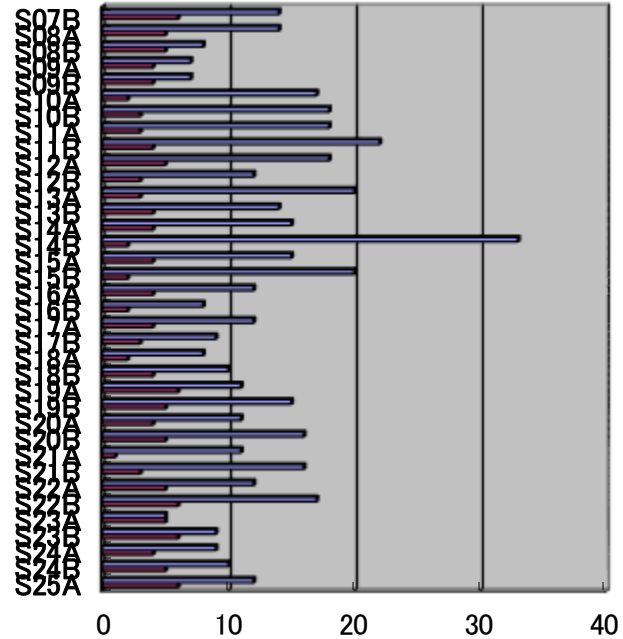


Time-Exchange programs

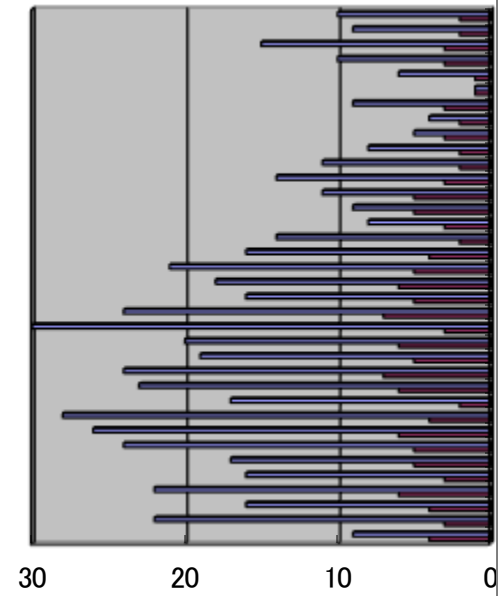
Subaru→Gemini
(申請件数・採択件数)



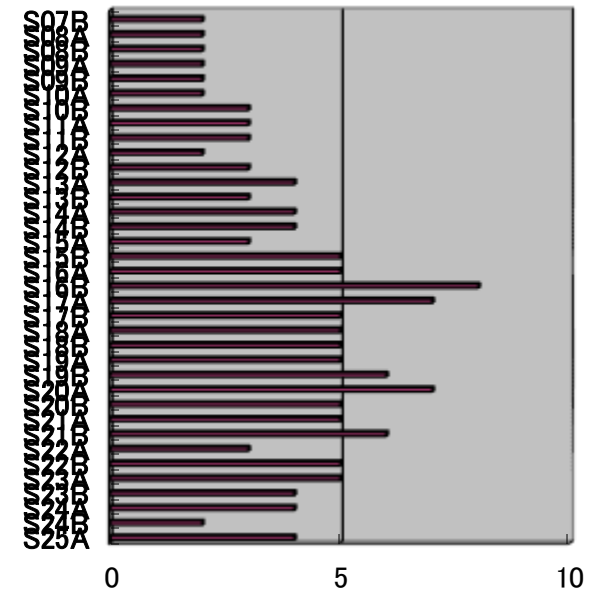
Gemini→Subaru
(申請件数・採択件数)



Subaru→Keck
(申請件数・採択件数)

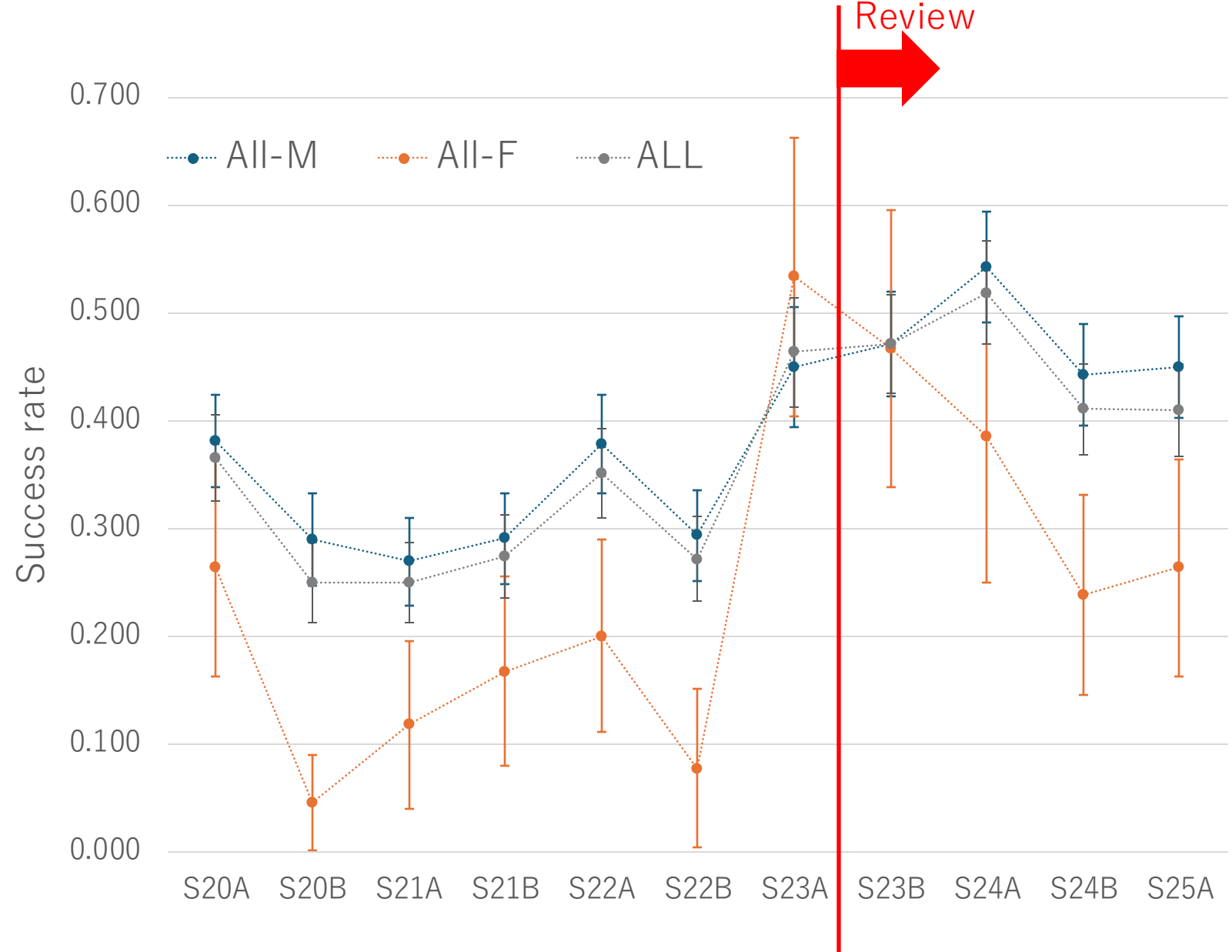


Keck→Subaru
(採択件数)



Gender bias

- ~S22B
 - unconscious gender-bias
- S23A
 - call for attention to referee
- S23B~
 - Dual anonymous
 - improving?
- S24B & S25A
 - gender-bias, again?



Notes (1/2)

- We previously had many violations of the dual anonymous policy. **Now violations have significantly decreased**, with only a few cases. Thank you for your cooperation, and let's maintain this improvement in future semesters.
- Science Categories
 - **“Extrasolar planets” will be divided into subcategories: “Evolved extrasolar planets”, “Young extrasolar planets”, and “Planet formation.”**
 - “Star Formation and Young Disk” will be simplified to “Star Formation.”
 - These changes were motivated by a high number of proposals under the “Extrasolar Planets” category, a part of which focuses on planetary formation processes or young systems. Such proposals often have strong relevance to those dealing with star formation and young disks.
 - These changes aim to improve the review process.

Notes (2/2, about PFS)

- In S25A, PFS proposals were evaluated based on observation times adjusted for the additional “Trace overhead due to fiber throughput variation” and the “Additional evaluation to support cosmic-ray removal by the 2D DRP.” Accepted proposals were determined using corrected times provided by the observatory.
- The review process followed the same referee scoring system used for other instruments.
 - It was completed within the expected allocation of 3 PFS runs and 3 HSC runs in S25A.
- PFS Community Filler
 - We introduced a mutual review process for the first time, with 10 submissions—all galaxy-related. Each submission was reviewed by three randomly assigned referees (the other PIs of the filler proposals), with efforts to limit the number of student PIs as reviewers.
 - Due to an error in the criteria setup, referees were only asked to provide scores without comments. We’ll address this issue in the next review cycle.

S24B-S25A Summary

- The decrease in competition has bottomed out, but the low competition rate has continued.
- Two new intensive proposals have been approved, bringing the total to three ongoing projects.
- The science categories have been changed.
 - Extrasolar Planets → Evolved Extrasolar Planets, Young Extrasolar Planets, Planet Formation
 - Star Formation and Young Disk → Star Formation
- The first Open Use of PFS.
 - The competition rate is similar to that of other instruments.
 - The review was conducted based on adjusted time, accounting for overheads and the instrument's status.
 - A mutual review was conducted under the Community Filler program.