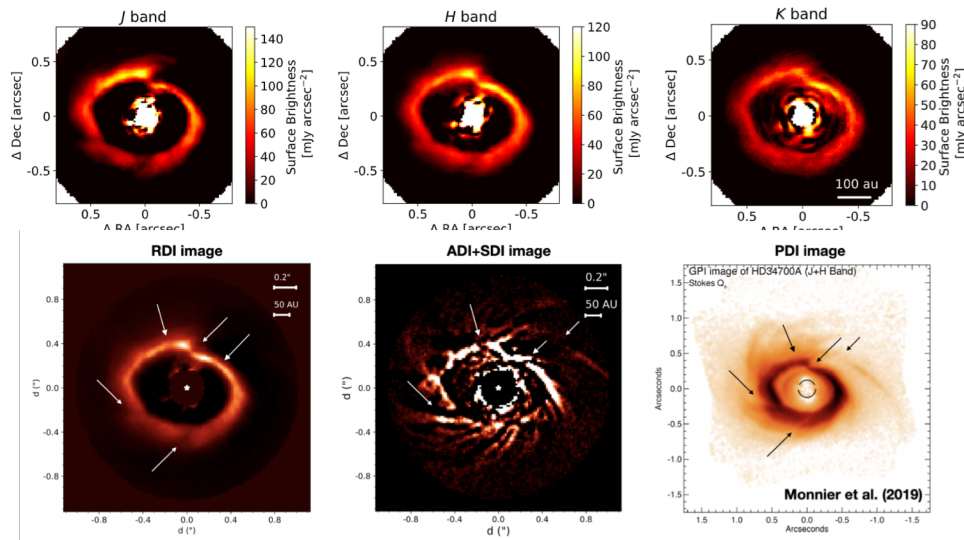


Imaging Protoplanetary Disks with SCExAO: Total Intensity

Taichi Uyama (Caltech/IPAC, NASA Exoplanet Science Institute, NAOJ)

CHARIS – IFS at JHK bands

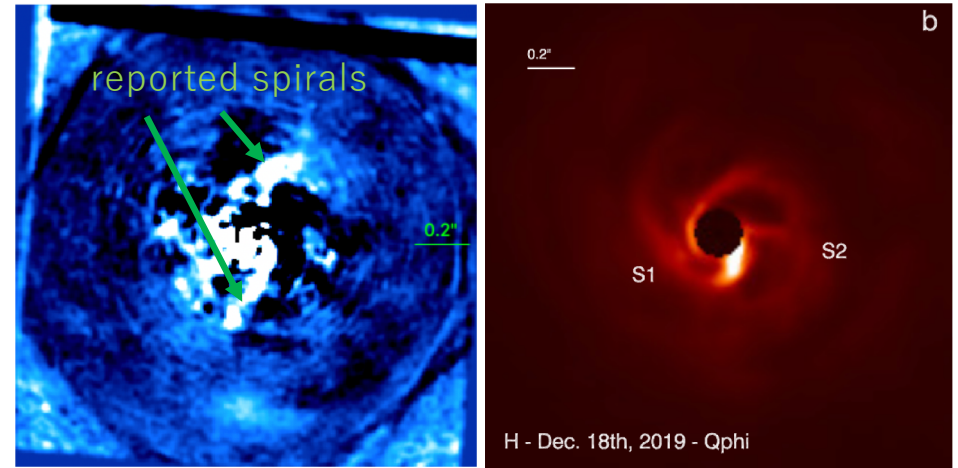
HD 34700



top: RDI-reduced images at JHK bands
bottom: collapsed images of RDI (left) and ADI+SDI
(middle) reductions, (right) PDI image taken by Gemini/GPI

VAMPIRES – Imager at optical wavelengths

AB Aur



left: ADI-reduced VAMPIRES image at $0.65 \mu\text{m}$
right: SPHERE PDI result

reference: Uyama et al. (2020), Monnier et al. (2019), Boccaletti et al. (2020), Currie et al. in prep