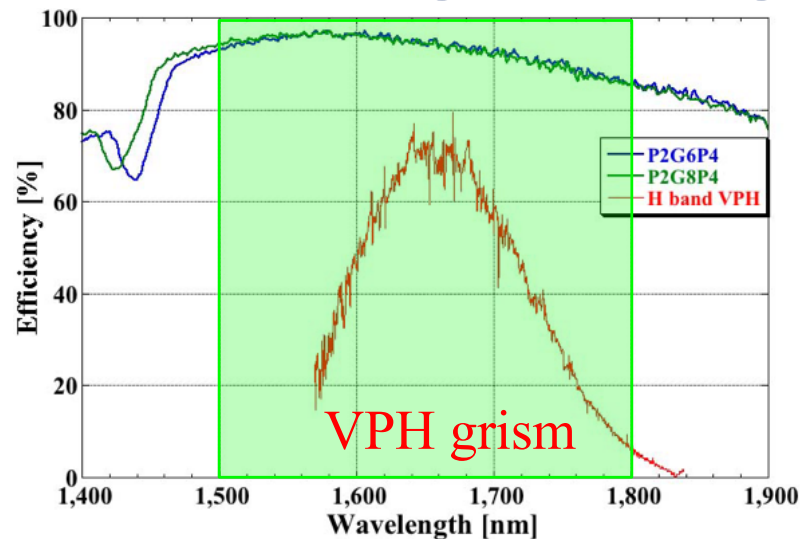
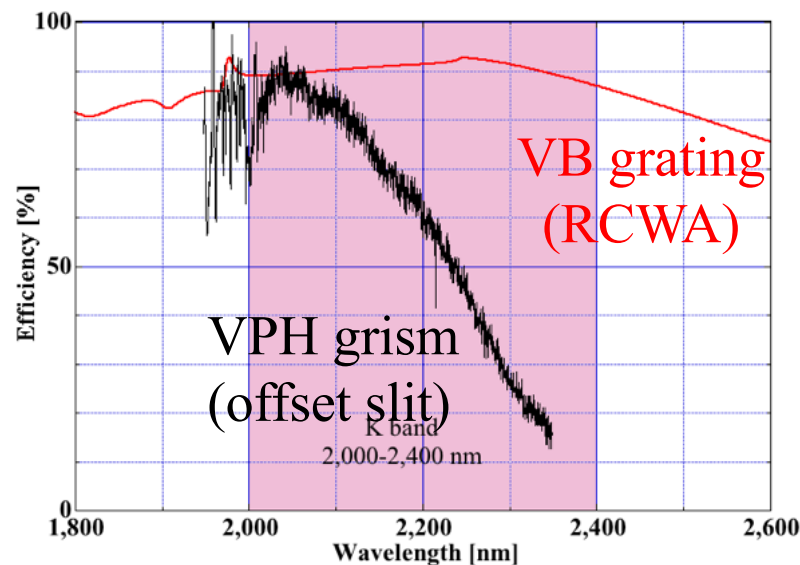


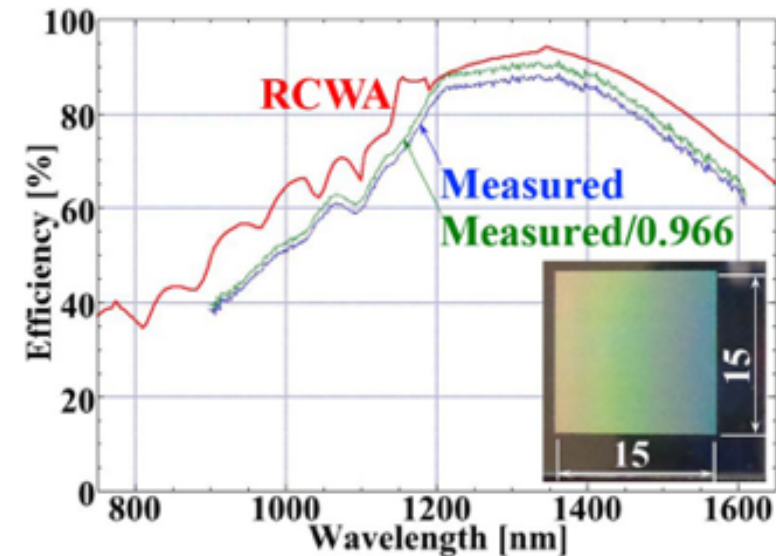
P06 VB grating for MOIRCS and ALIS



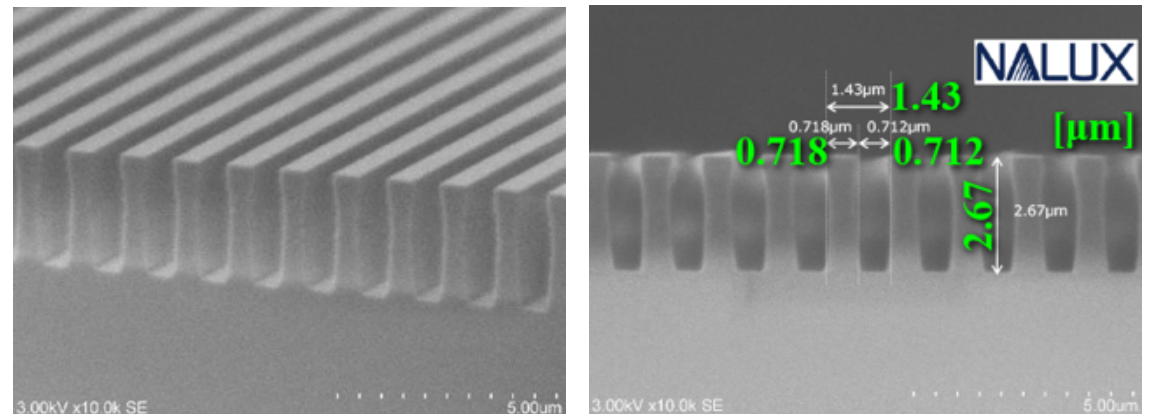
H band grism with LightSmyth grating.
[I. Tanaka, *Proc. SPIE* 11451 (2020)]



VB grating for K band grisms.
 $\Lambda=2.36\mu\text{m}$, $L\&S=1:1$, $t=4\mu\text{m}$.



Volume binary (VB) grating for Advanced Lunar Imaging Spectrometer (ALIS).
 $\Lambda=1.43\mu\text{m}$, $L\&S=1:1$, $t=2.65\mu\text{m}$.



VB grating fabricated by anisotropic plasma etching.