

TAC Report

Kentaro Motohara (Univ. Tokyo → NAOJ)
on behalf of Subaru Time Allocation Committee

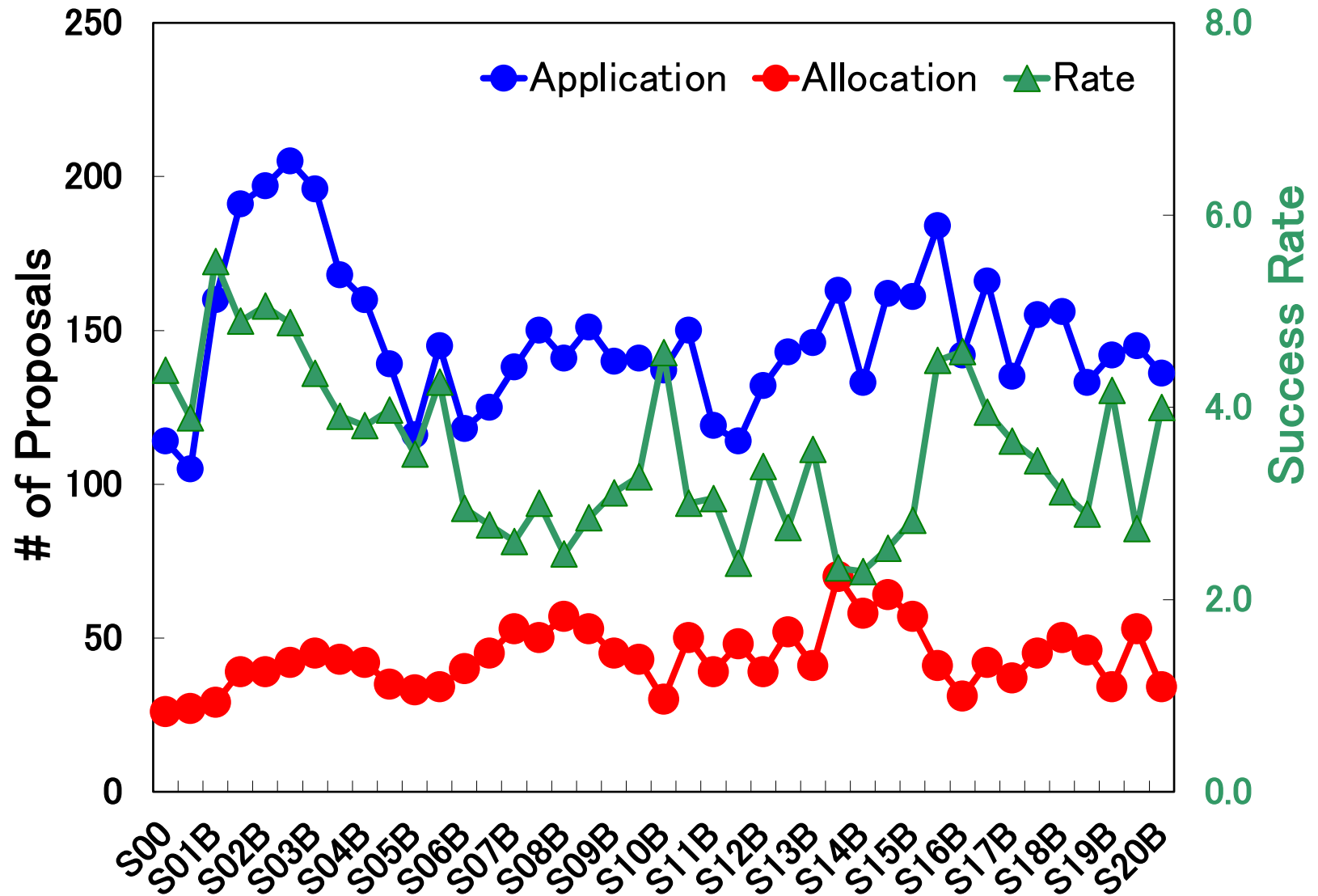
TAC (11th) Members

Since 2019/7 (S20A), until 2021/6 (S21B)

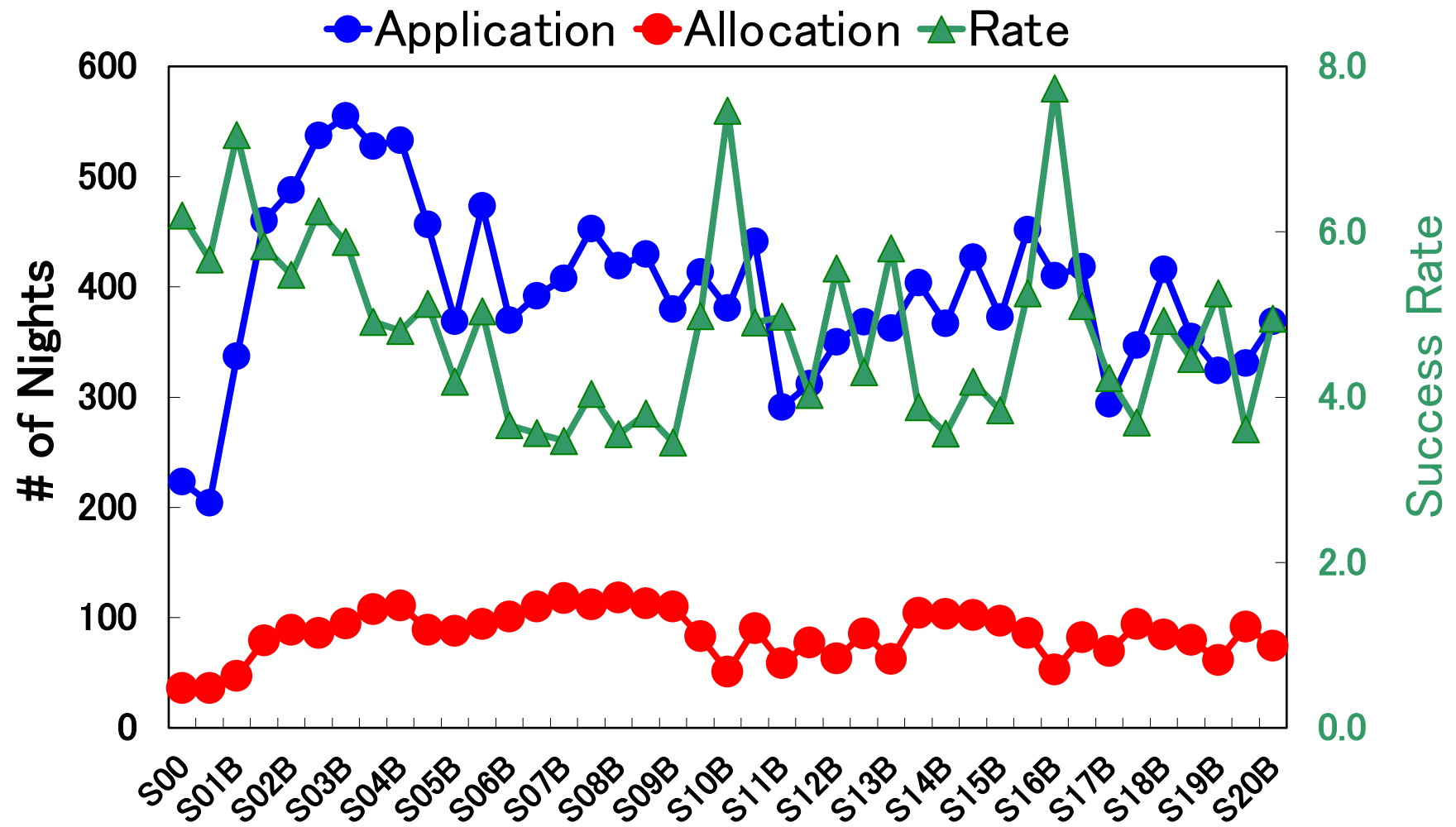
- ✓ Kentaro Motohara (Chair, Univ. Tokyo)
- ✓ Nozomu Tominaga (Co-Chair/compact objects, Konan Univ.)
- ✓ Takanori Sasaki (solar system, Kyoto Univ.)
- ✓ Takahiro Sumi (exoplanets, Osaka Univ.)
- ✓ Michihiro Takami (star formation, ASIAA)
- ✓ Toshiya Ueta (stars, Denver Univ.)
- ✓ Hidenobu Yajima (cosmology, Tsukuba Univ.)
- ✓ Yoichi Tamura (Hi-z galaxies/general, Nagoya Univ.)
- ✓ Akio Inoue (Hi-z galaxies/cluster, Waseda Univ.)
- ✓ Sakurako Okamoto (nearby galaxies, NAOJ)
- ✓ Toru Misawa (AGN and galaxies, Shinshu Univ.)

Statistics

Oversubscription Status (in # of Proposals)

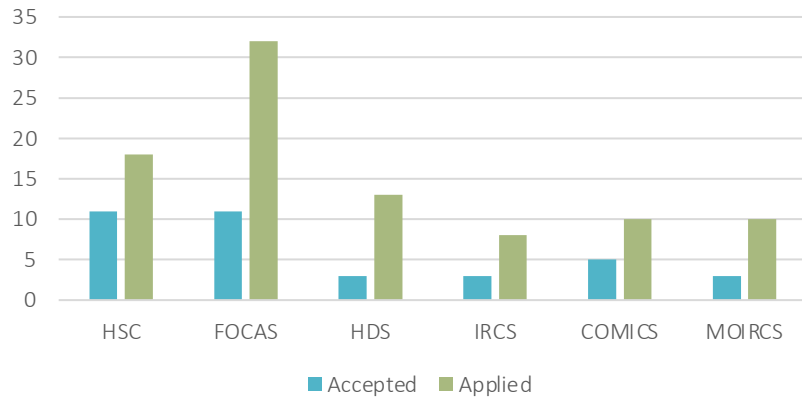


Oversubscription Status (in # of Nights)

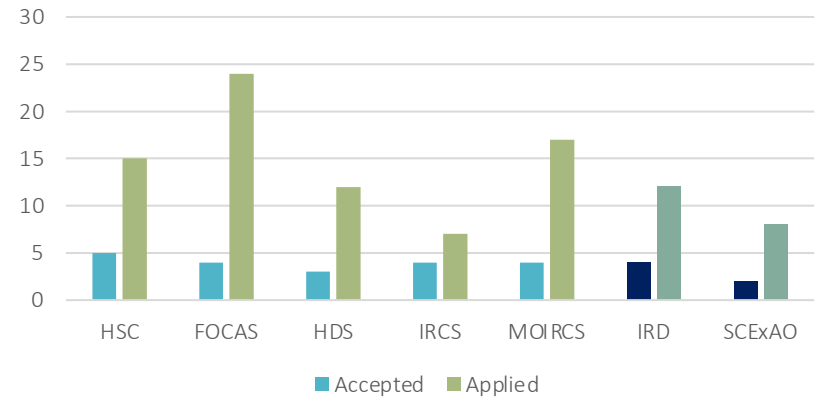


Proposals for Each Instrument

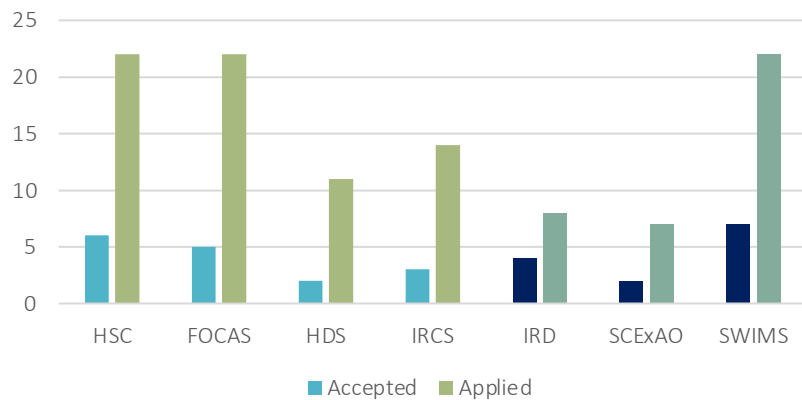
S20A # of Proposals



S20B # of Proposals

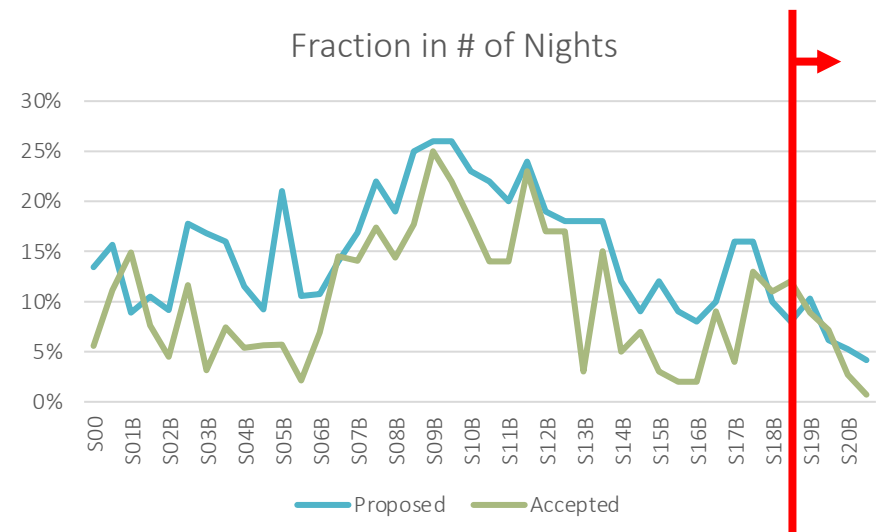
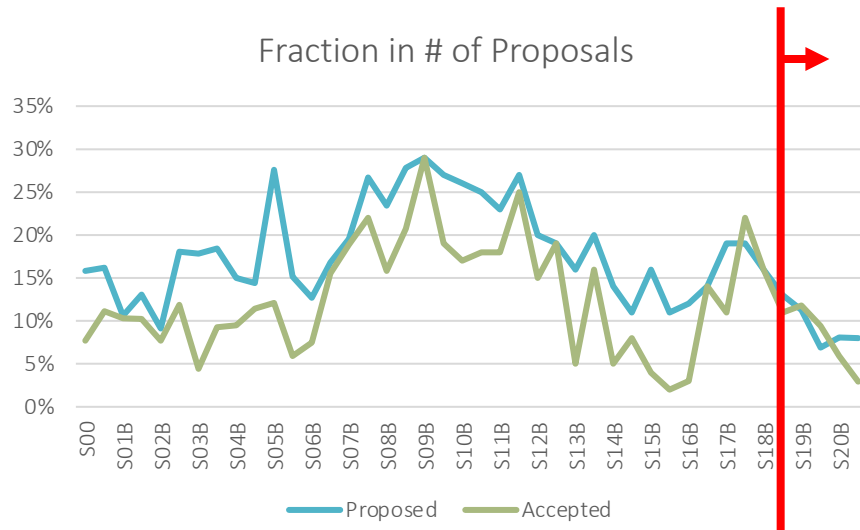


S21A # of Proposals



- ✓ Still high demands for HSC
- ✓ FOCAS gets popular again, possibly for the new IFU
- ✓ SWIMS had a good start in S21A

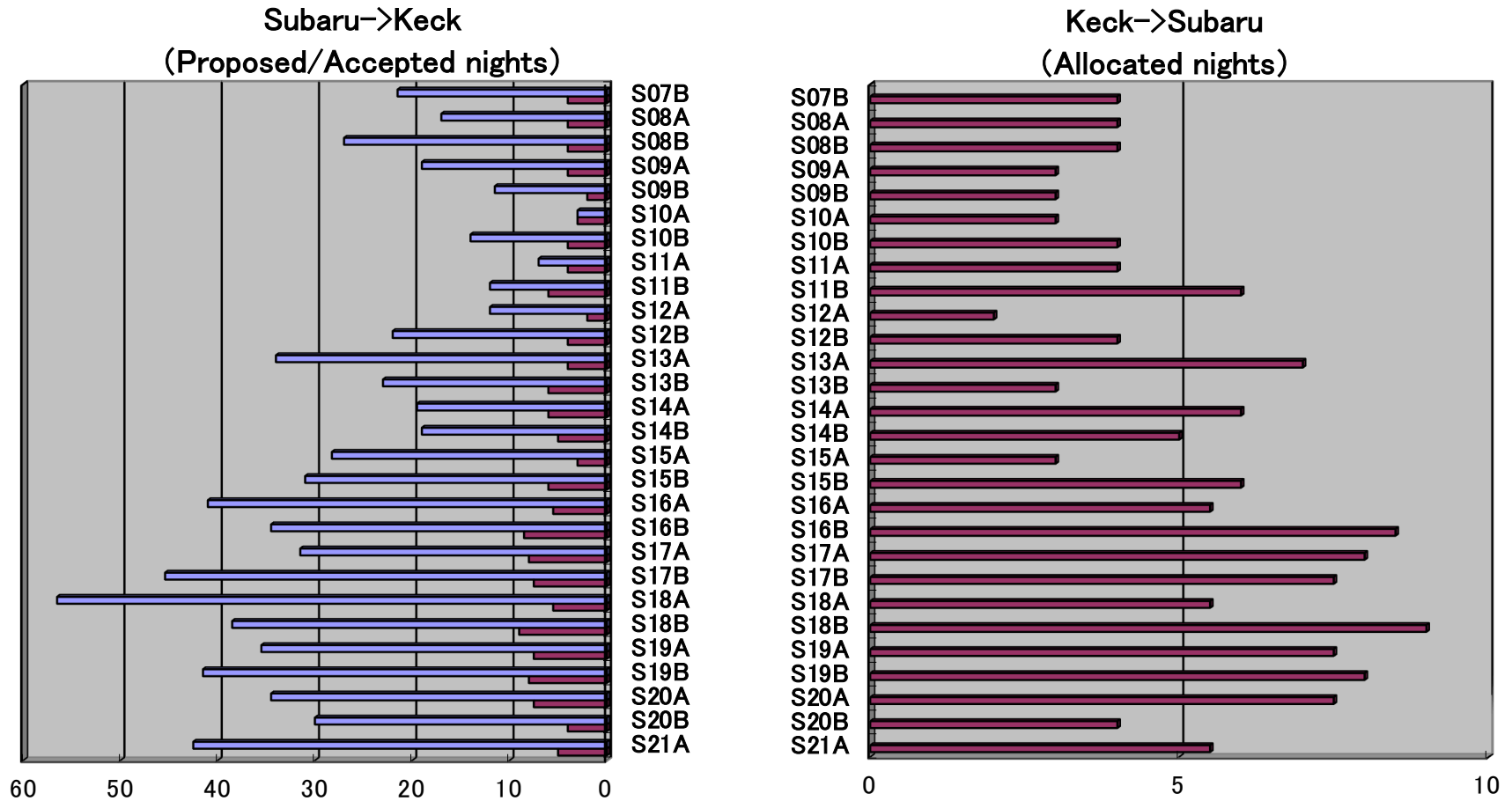
International Proposals



New rules introduced in S19A

- ✓ <5% in normal program nights for international PI proposals (3n in S19B)
- ✓ <10% in normal program nights for Princeton/Taiwan PI+ international PI proposals

Time Exchange (w. Keck)

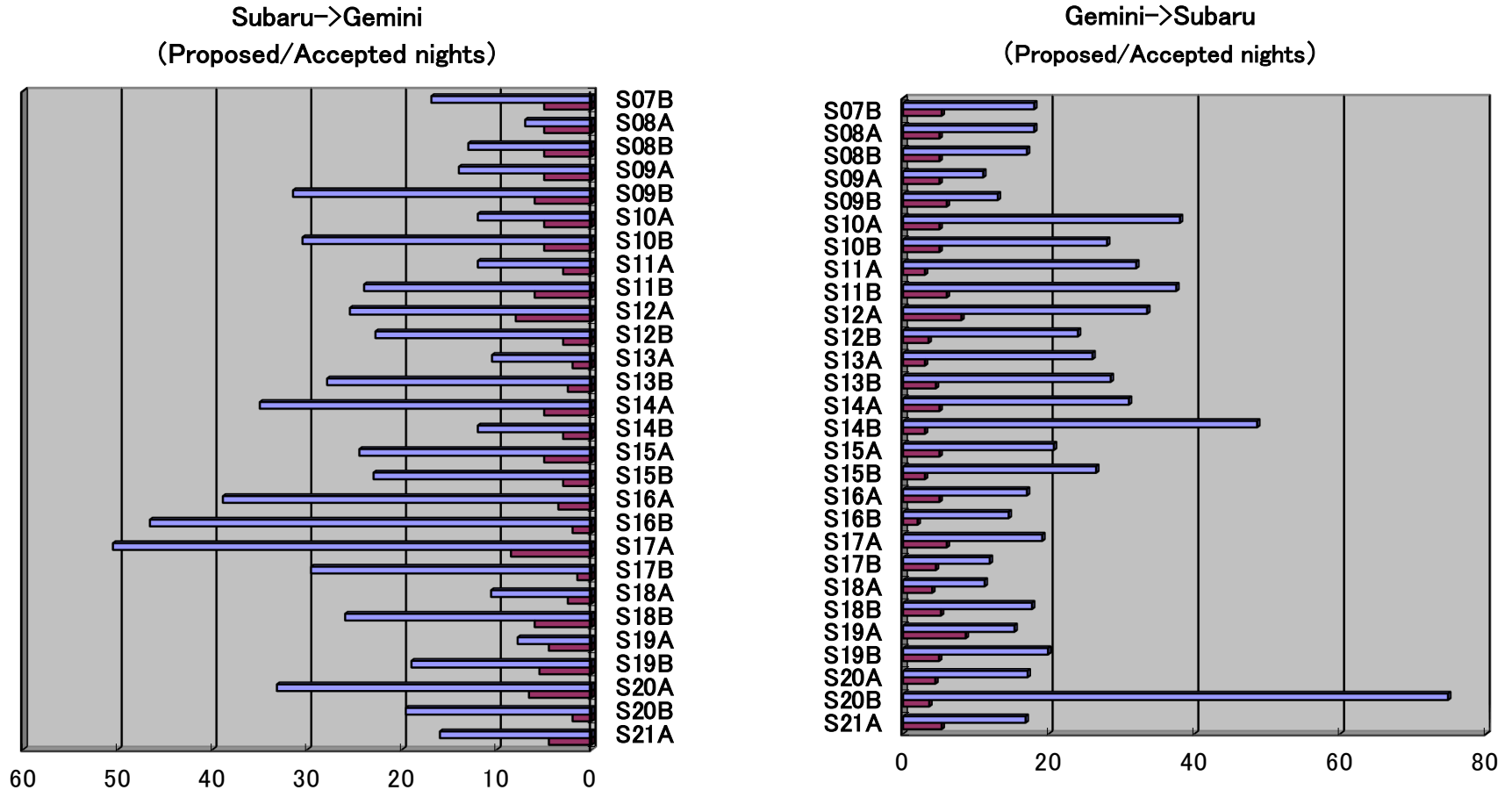


✓ Keck => Subaru : HSC and COMICS

✓ Subaru => Keck : MOSFIRE, DEIMOS, KCWI

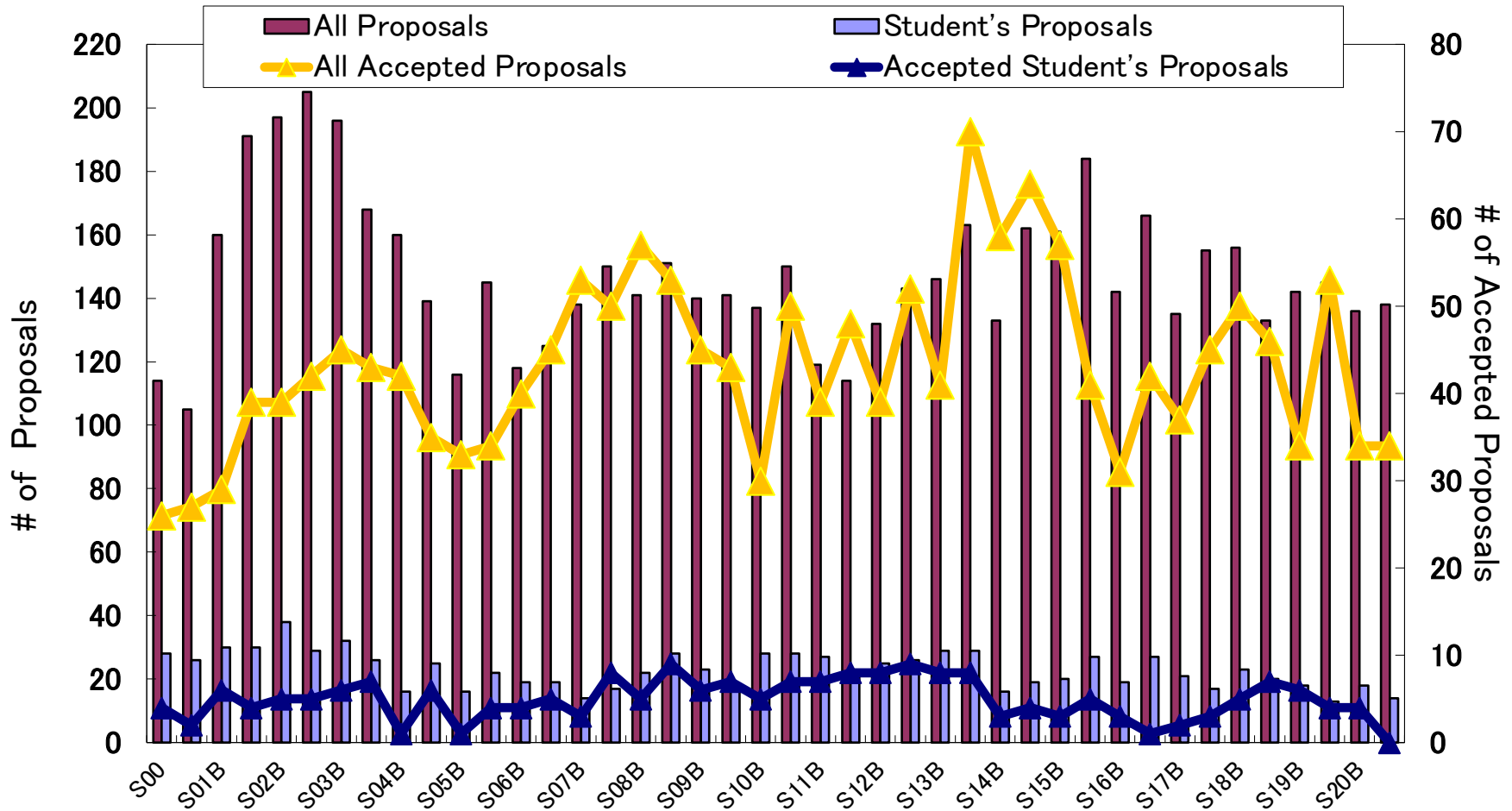
Competition rate is still high as 5...

Time Exchange (w. Gemini)



- ✓ Gemini => Subaru : Still high demand for HSC, some HDS
- ✓ Subaru => Gemini : Mostly GMOS (N and S), NIFS w. AO

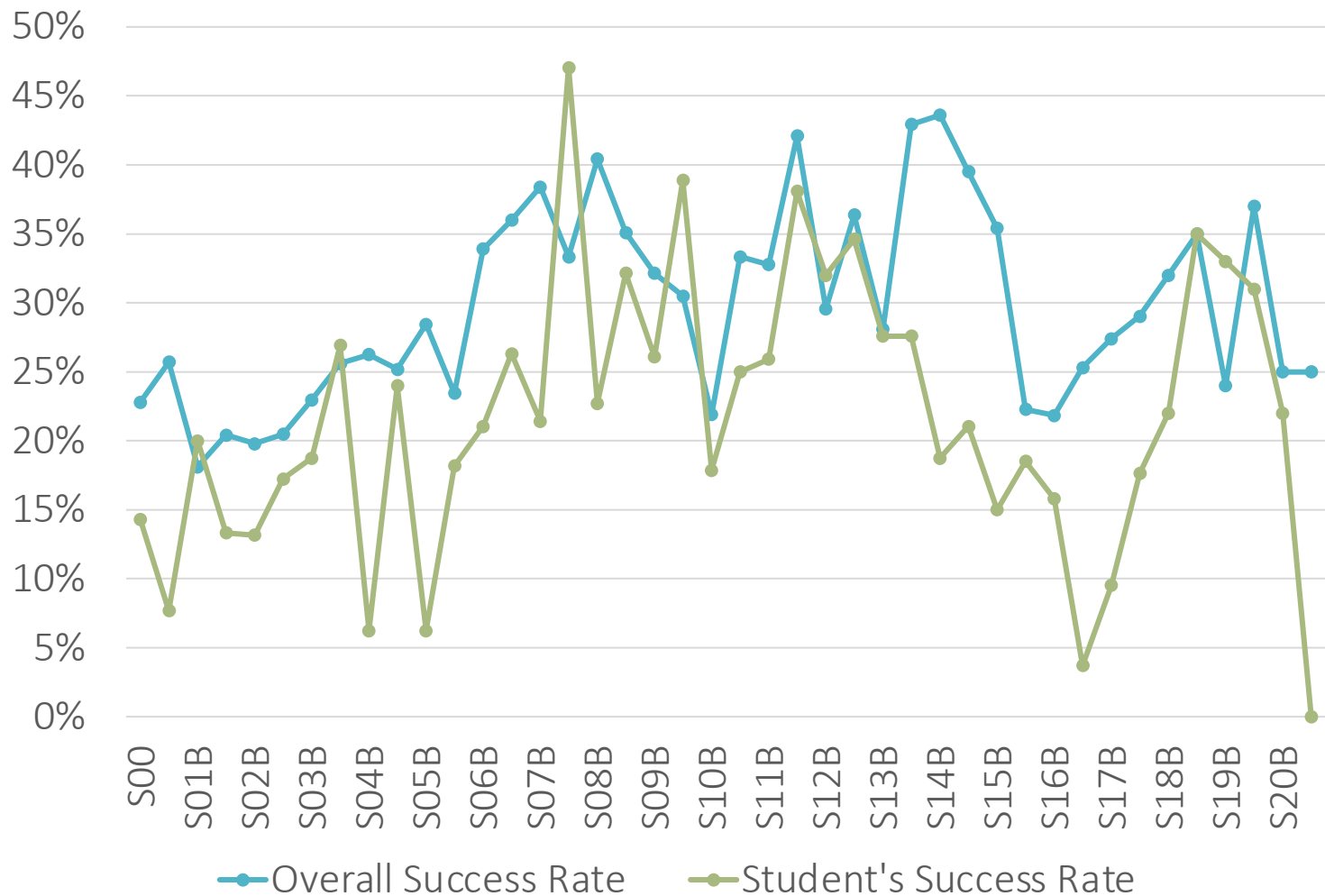
Graduate Students' Proposals (# of proposals)



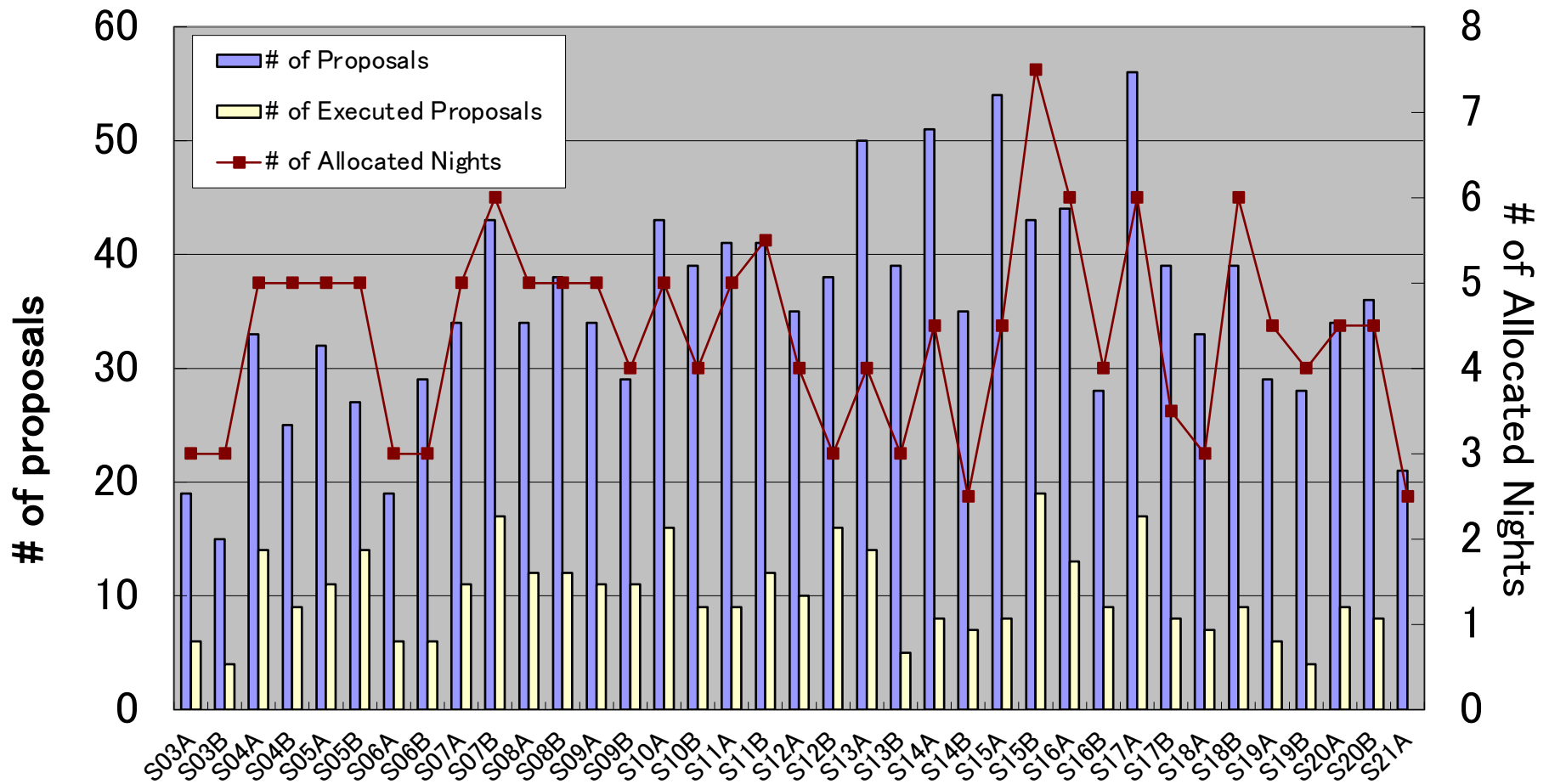
✓ No student's proposal was accepted in S21A

✓ Probably just a statistical fluctuation

Graduate Students' Proposals (Success rates in # of proposals)

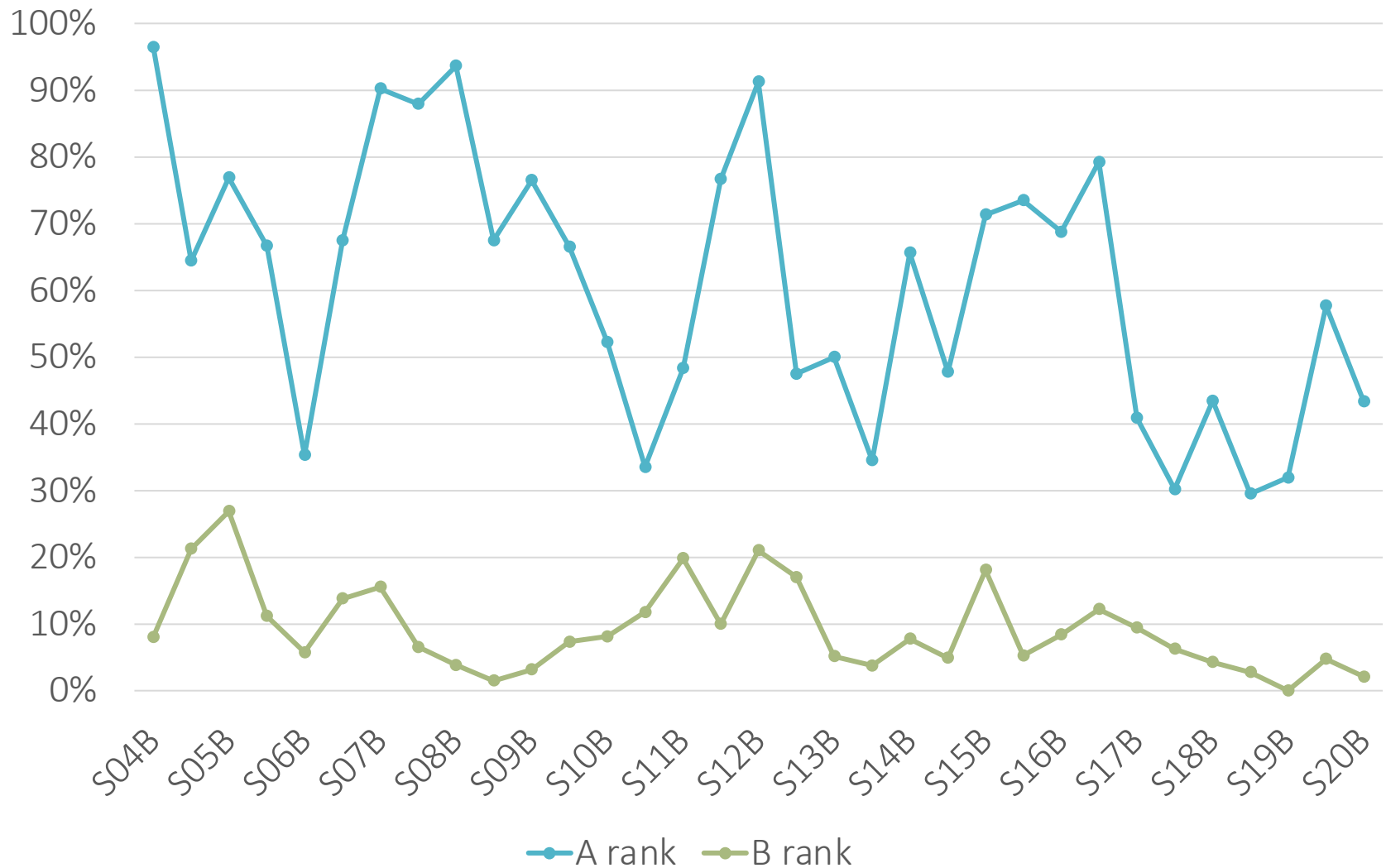


Service Programs (<4hrs)

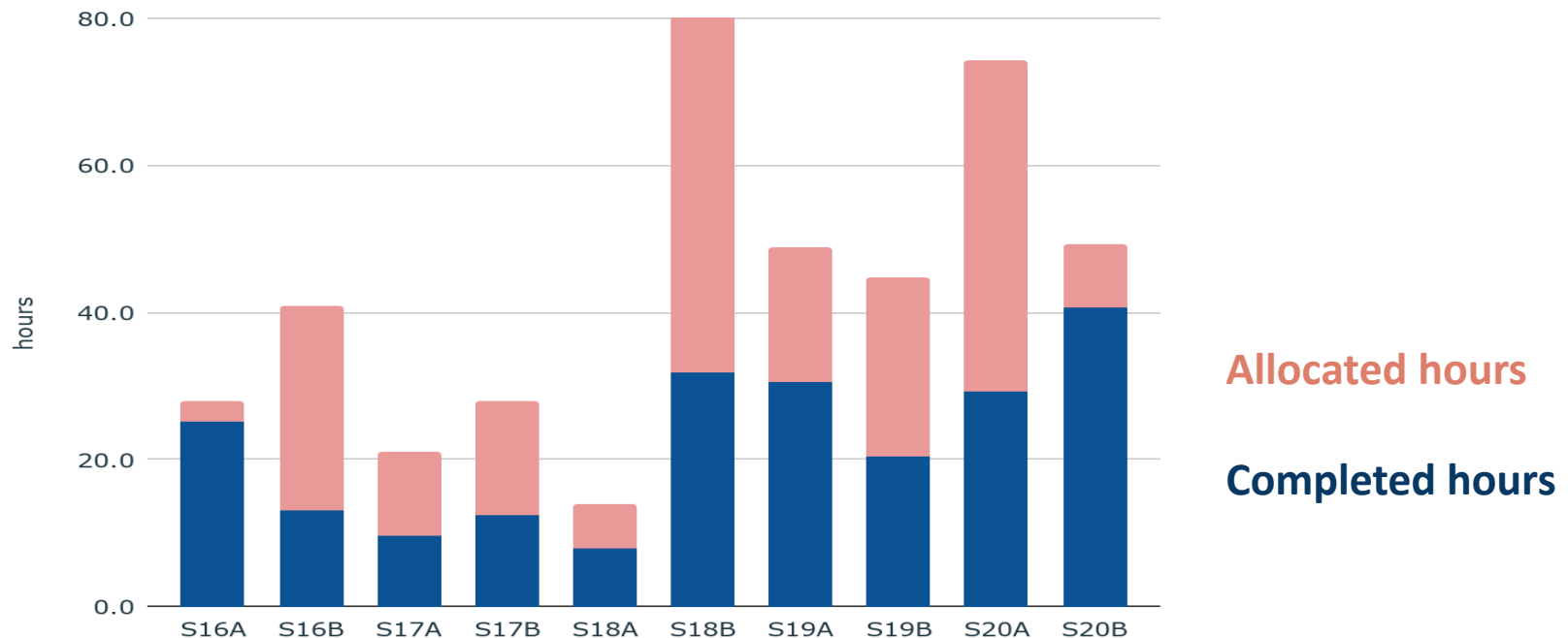


✓ # of service proposal decreased in S21A

Execution Rate of Service Programs



HSC Queue Execution



- ✓ Completion rate is relatively low
- ✓ S20B is an anomaly, due to
 - intensive program requiring loose condition
 - larger number of nights was allocated to HSC queue
 - good weather, etc...
- ✓ Detailed discussion in Friday morning

Issues, Comments, Concerns...

- ✓ Proposals PI-d by graduate students had a hard time in S21A down selection
- ✓ HSC Queue completion rate is low (will be discussed in Friday morning)
 - Completion rate is low
 - Too many rank-A proposals
- ✓ How to deal with carry-over of HSC-Queue Intensive program
- ✓ Two large HSC Intensive programs ongoing, which occupies the Grade-A nights
 - It may be difficult to accept another HSC intensive program now

Summary

- ✓ TAC #11 ends at 2021 June
- ✓ Current Concerns
 - Two Large HSC Intensive program as legacy
 - HSC queue completion rate is low
 - Have to make a new system once the international partnership is established (as suggested by TAC#10)

Please provide us whatever feedback you have!