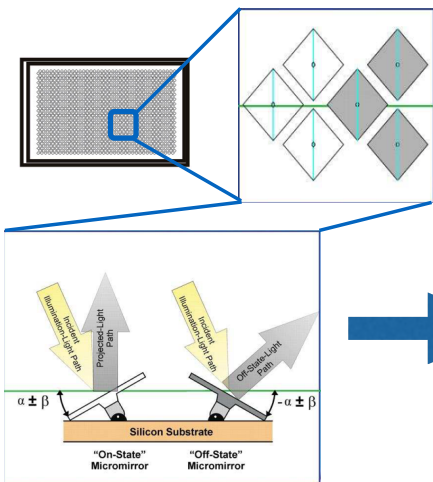
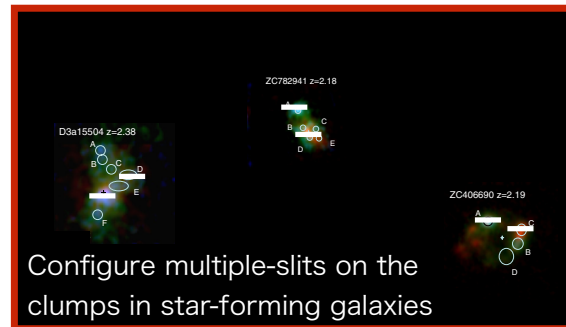


Development of a configurable multi-object slit unit for AO188+IRCS

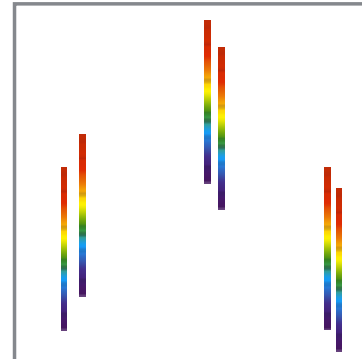
Yosuke Minowa (Subaru Telescope)



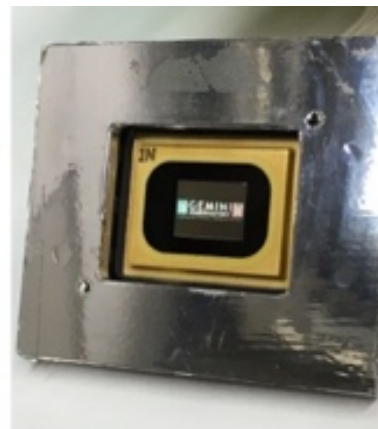
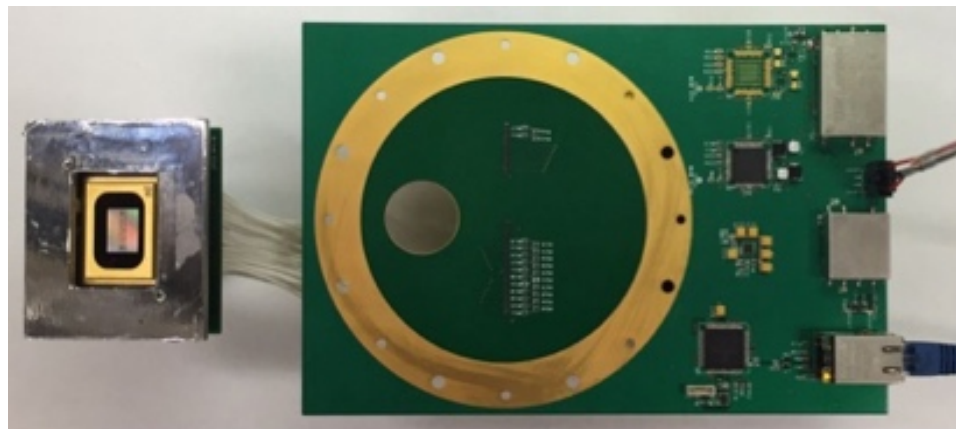
Example of slit configurations



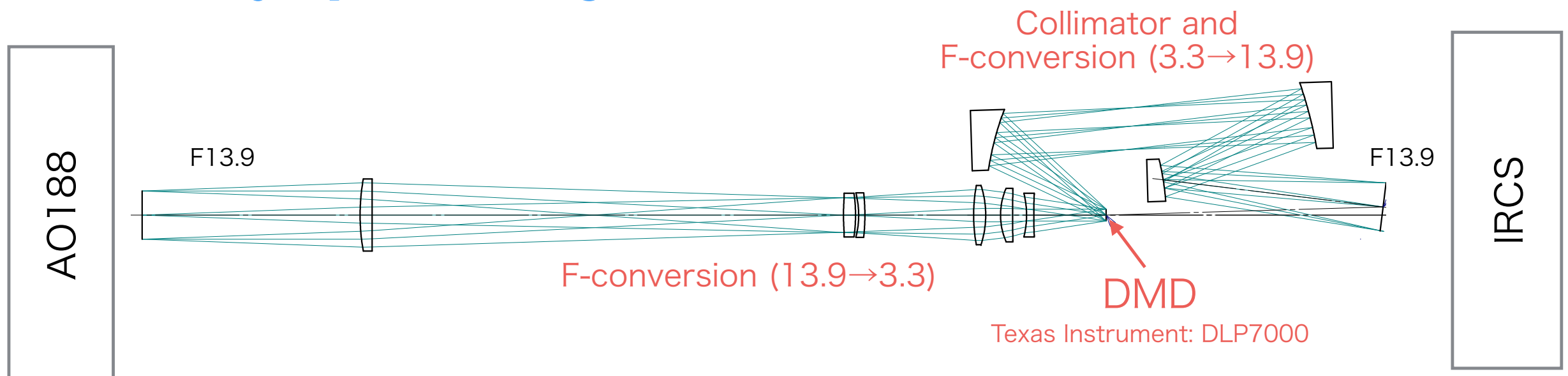
Expected spectra



- Digital Micro-mirror Device (DMD) is used as configurable reflective slits.
- Technical and Science demonstrator for a future massive spectrograph with a configurable slit unit (e.g. for ULTIMATE-Subaru)



Preliminary Optical Design



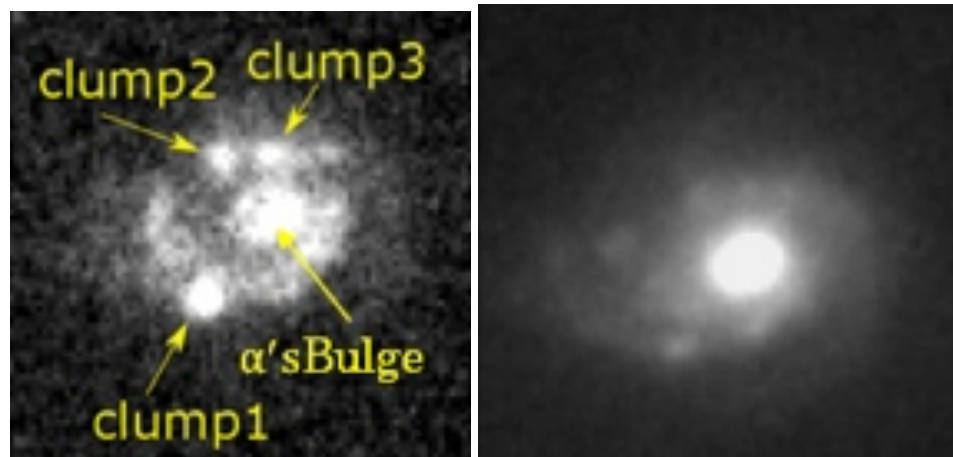
Development of a configurable multi-object slit unit for AO188+IRCS

Yosuke Minowa (Subaru Telescope)

Potential targets:

Star-forming galaxies observed with AO188+IRCS narrow-band imaging

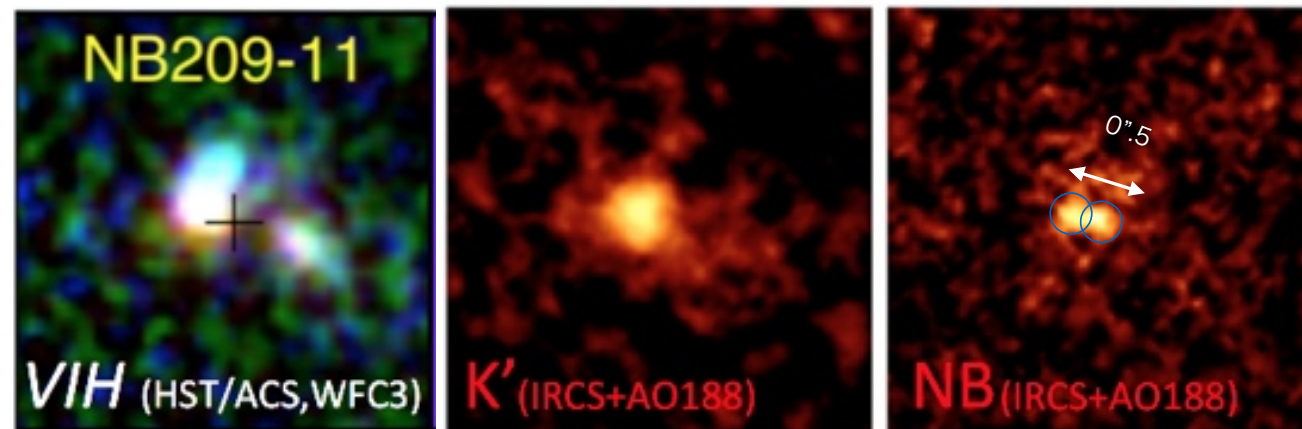
$z \sim 0.1$ star-burst galaxy



Ionized gas ($\text{Pa } \alpha$)

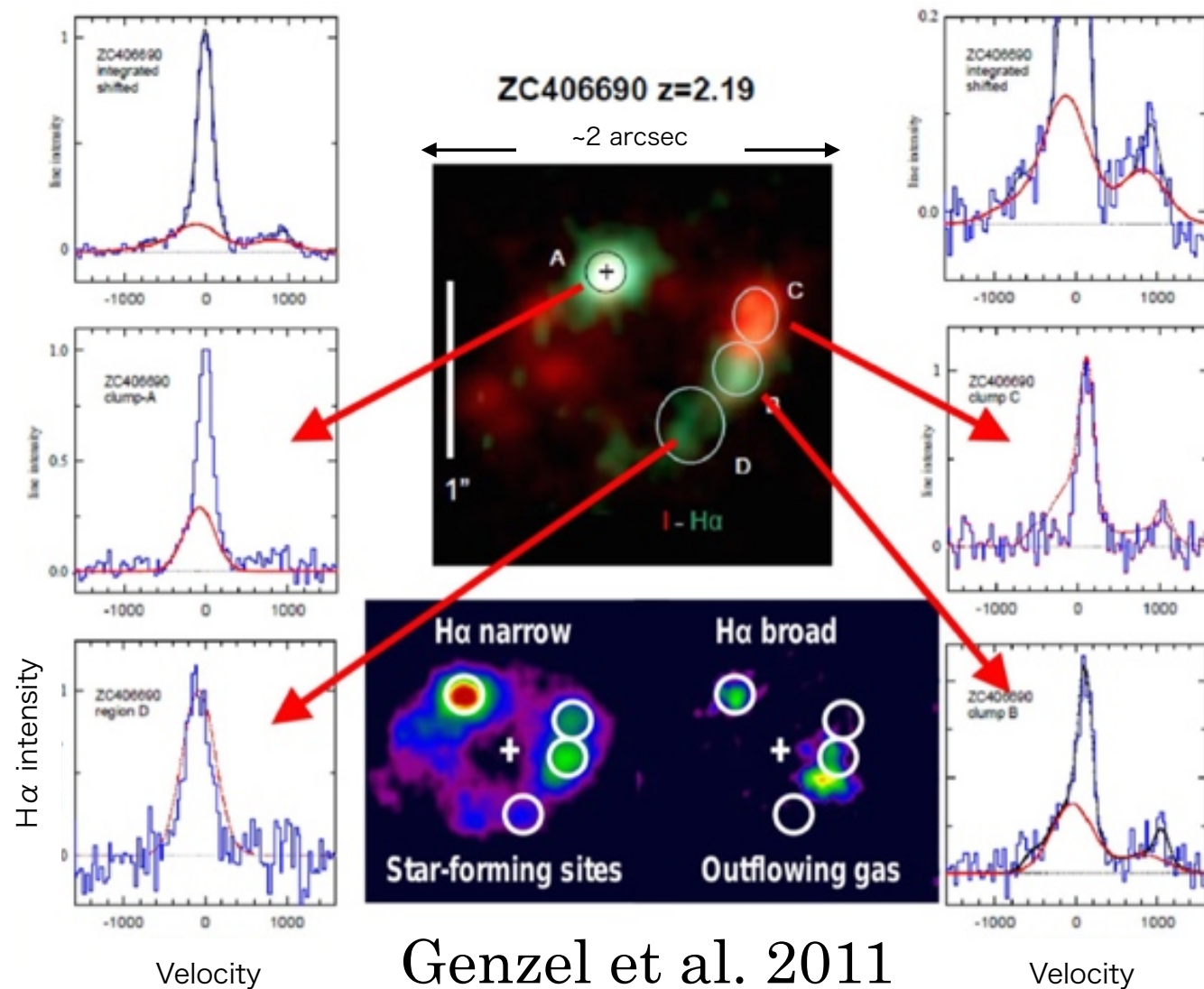
Stellar component

$z \sim 2.2$ star-forming galaxy



Ionized gas ($\text{H } \alpha$)

Stellar component



Genzel et al. 2011

Study outflows from star-forming clumps to understand the feedback process in galaxy evolution.