

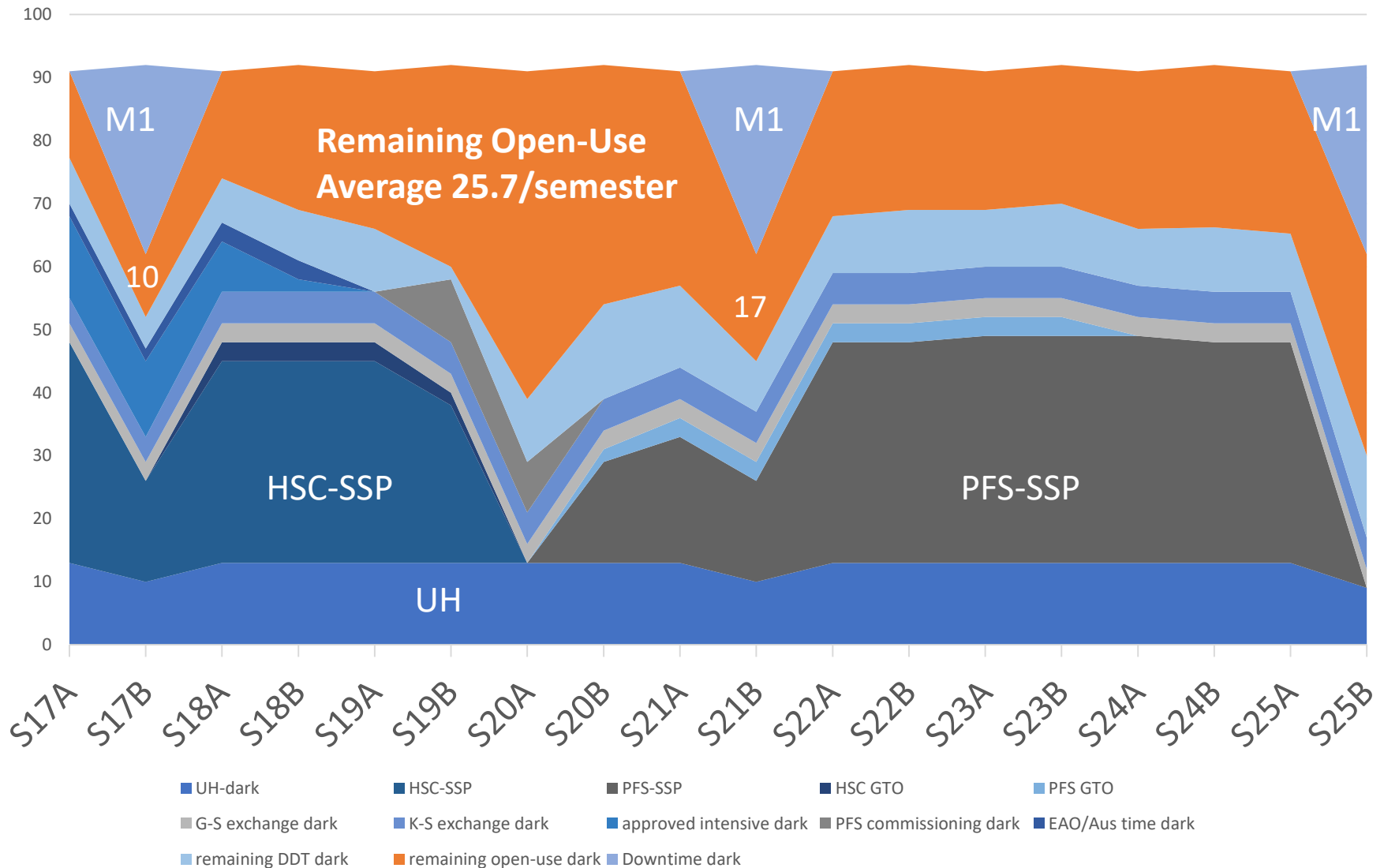
# Perspective of Available Open-use Time

- Large Strategic programs (HSC, IRD, PFS)
- Expansion of time-exchange programs?
  - Gemini – FT, LLP
  - Keck – Collaborative programs?
- Update estimate of available regular open-use time, based on the latest information on PFS schedule, telescope maintenance plans
  - ‘regular’ means normal + service
  - But not include possible medium or large-sized programs such as Subaru-Keck collaboration, Euclid-support HSC intensive, WFIRST joint programs etc.

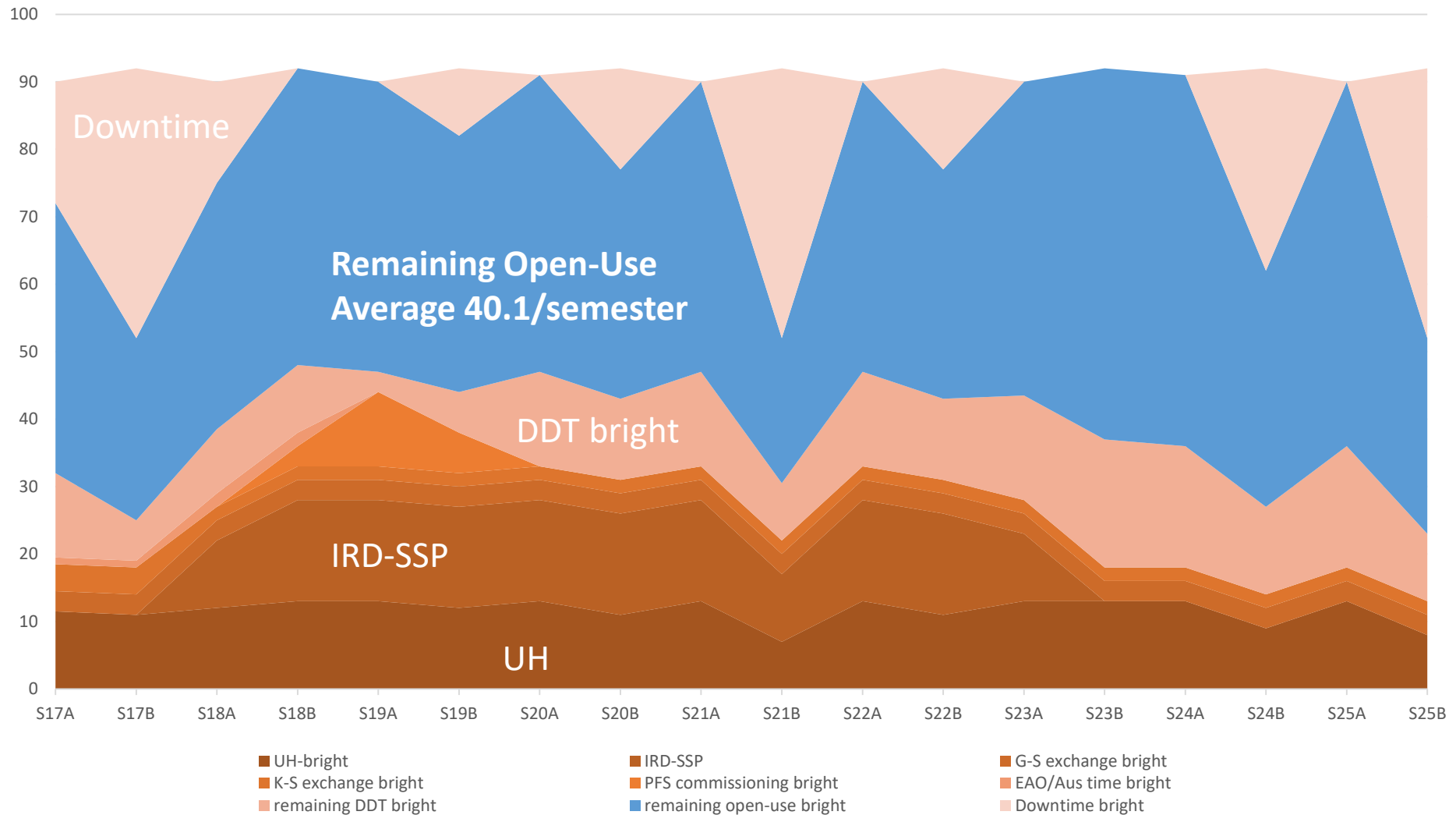
# Perspective of Available Open-use Time

- Open-use: 65%
  - Incl. 75% of SSP
  - Incl. time exchange programs
- UH: 15%
- Director's Discretionary Time: 20%
  - engineering and staff-time
    - Incl. commissioning of PFS
  - Incl. 25% of SSP
- Partners' telescope time shares are included in open-use

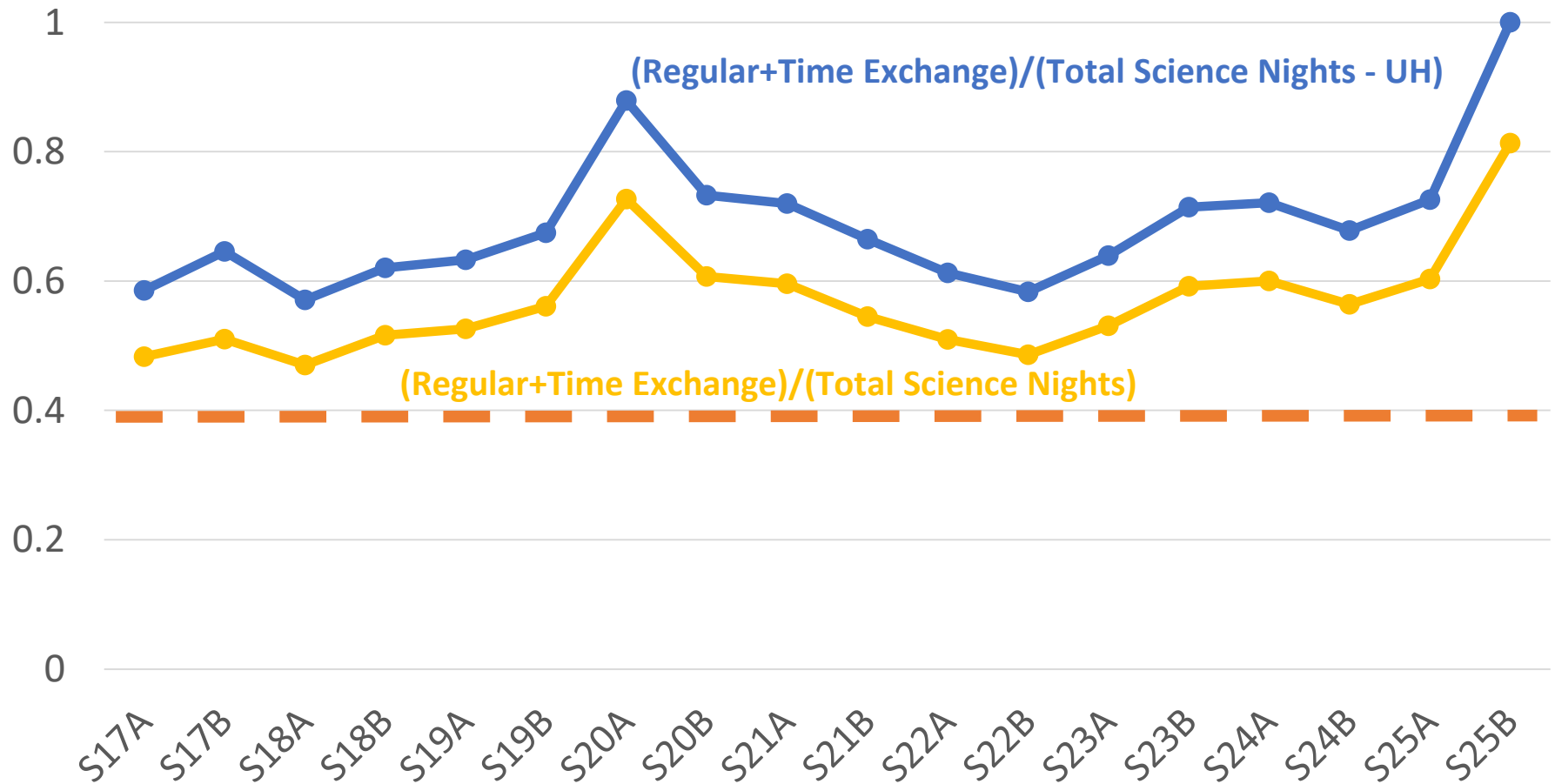
# Telescope time - Dark



# Telescope time - Bright

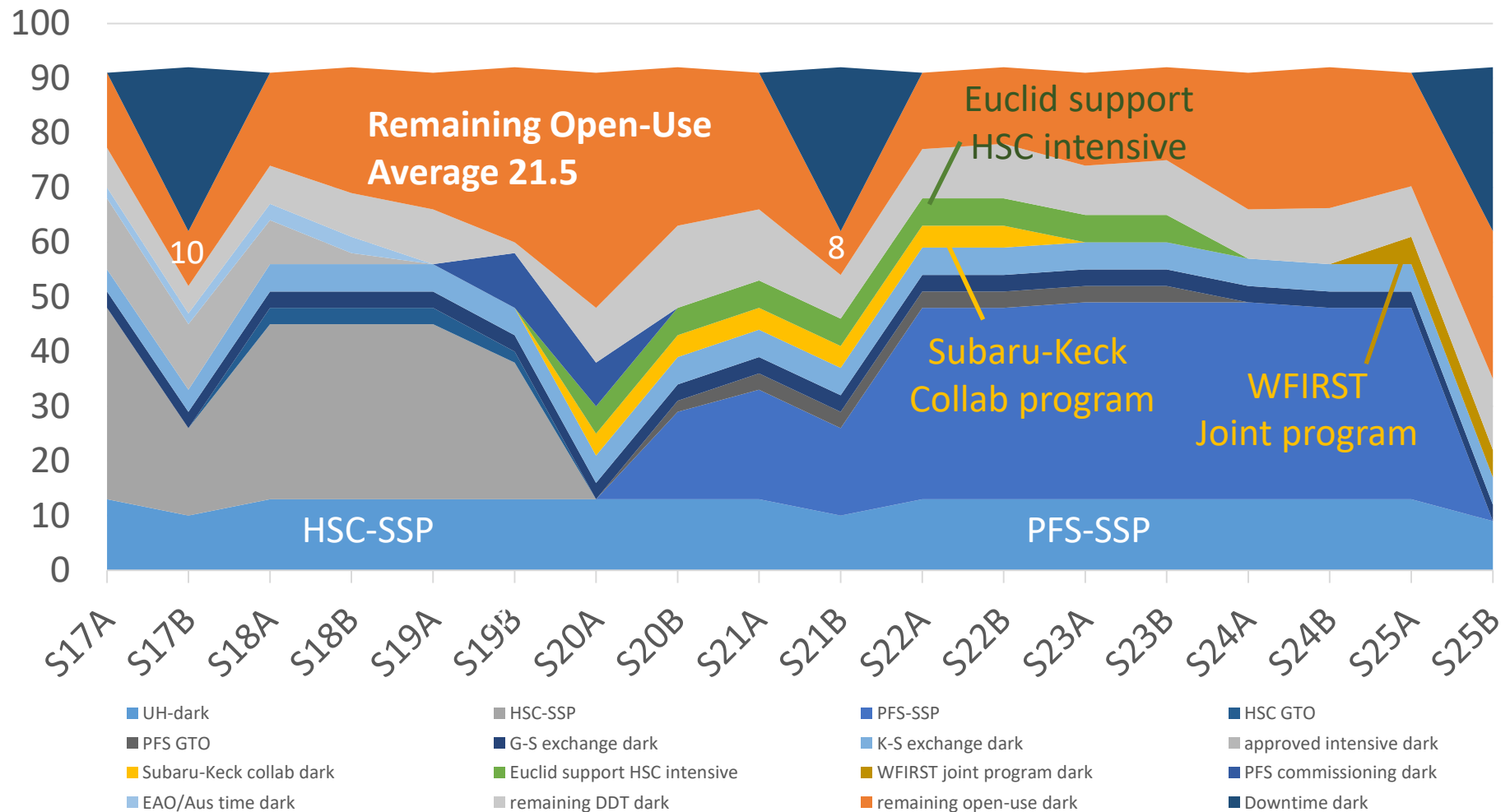


# Fraction of Regular+TE among Science nights



\* Intensive programs are not included in "Normal+TE"

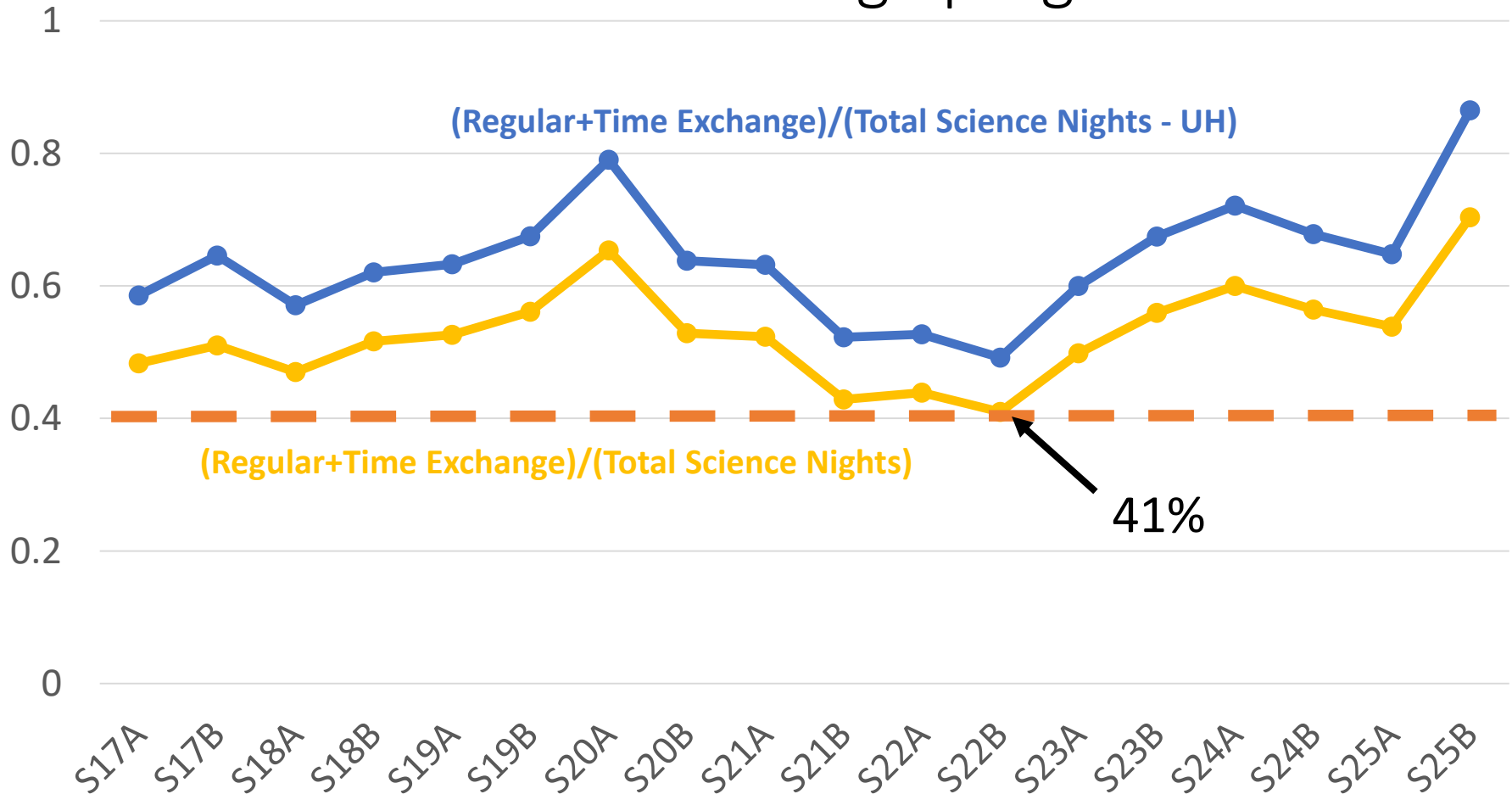
# Telescope time – Dark with Possible additional large programs



\* Subaru-Keck: 4 dark + 2 bright for 6 semesters (in addition to existing Time Exchange)

\* Euclid: 5 dark for 8 semesters \* WFIRST: 5 dark + 5 bright per semester from S25A

# Fraction of Regular+TE among Science nights with Possible additional large programs



# Open-use programs: discussions

- A new regulation proposed by SAC: “minimum 40% of science nights for regular programs”
  - This could regulate the size of new large / medium programs.
  - Keep this rule for five years from 2017
  - Is this fine with you?
- Any thoughts on changing other policies?