

# **Current Status of Subaru Telescope**

**Tomonori USUDA  
&  
Telescope Engineering Division**

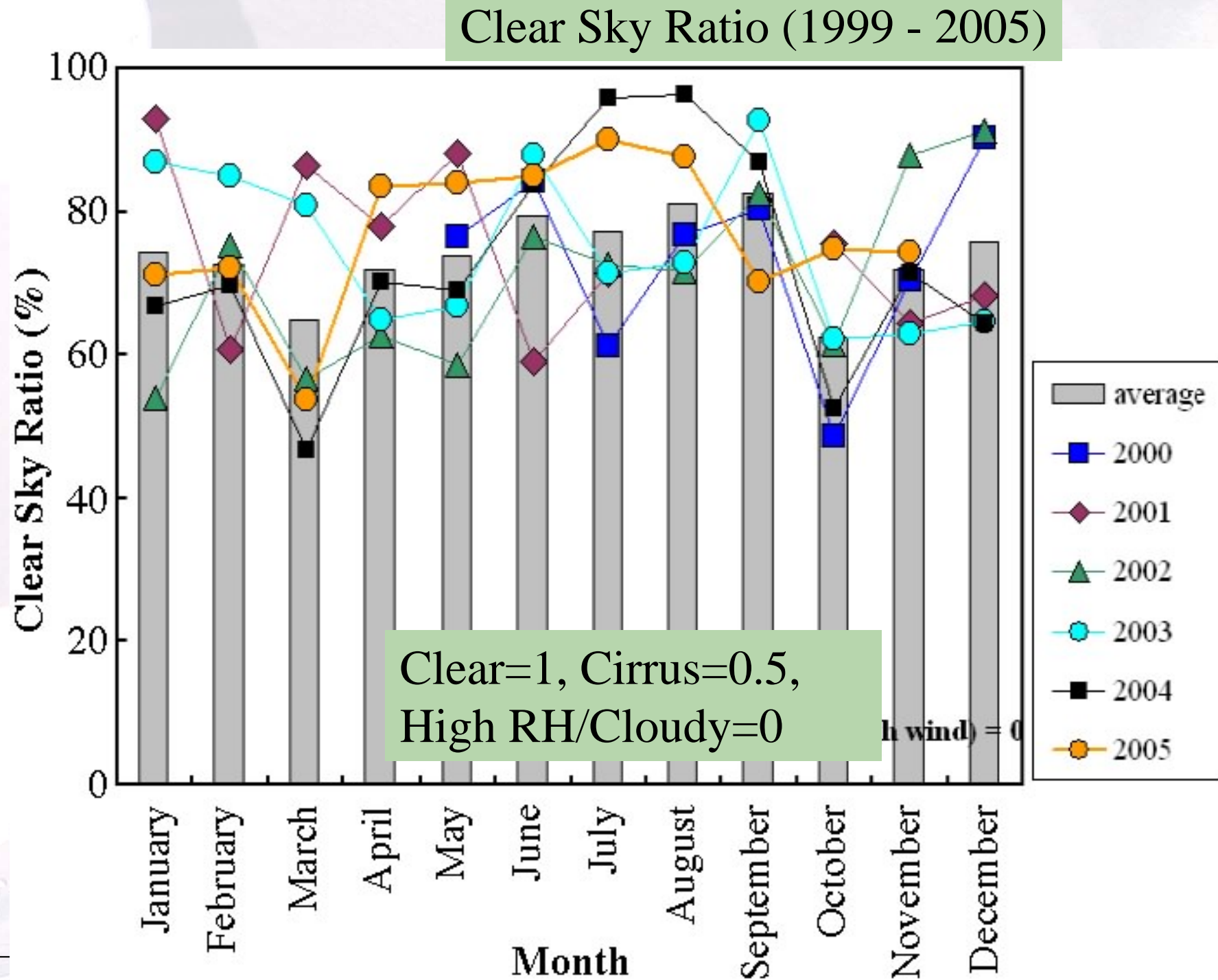
# Contents of our Presentation

## ∞ Current Status & Upgrade plans

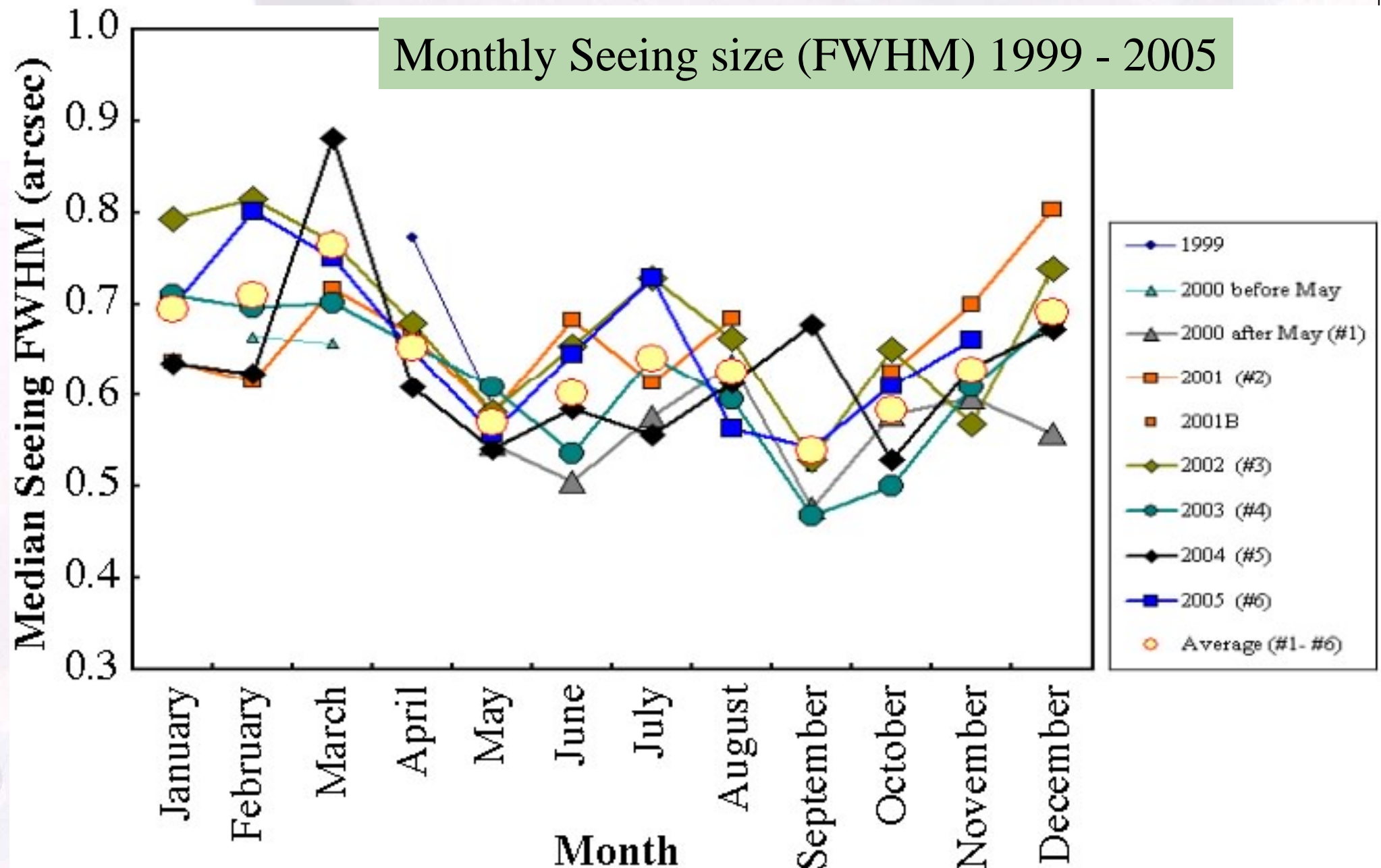
- **Weather** : Statistics
- **Image Quality** : Statistics (Focus AG)
- Upgrade items:
  - ✧ Mirror Re-coating , Useful information, etc.
  - ✧ Items in FY2005 (**Users' Comments**)
  - ✧ Items in FY2006 (**Users' Comments**)

## Weather & Seeing Statistics (Miyashita et al.)

- Statistics from 1999
- Humidity, Atm pressure, Precipitation, Temperature, Wind, Seeing, Clear sky ratios, etc.
  - ⇒ Enables to discuss statistically
- Median Seeing @R&I-band=0.''6
- Seeing: **September** is best & **Winter** is worst







## Mirror Re-coating , Useful Informations, etc.

- **Opt-M3** (A1, in October) & **IR-M3** (Ag, in December)  
**Successfully done.** Down time was 1 week for each.
- Useful Informations
  - ✧ **IR Cloud monitor**  
will be **updated in January**
  - ✧ **DIMM seeing monitor** (under testing) **@Cat walk**  
<http://www1.subaru.nao.ac.jp/~ura/asms/>
  - ✧ **Sky monitor**  
Images will be archived with IR Cloud monitor.
  - ✧ **SkyProbe (new)** Under developing
  - ✧ Others (SODAR in March, IRMA, etc.)

## ∞ Upgrade Items in FY2005

- **TSC** replace: Tests (Feb-May), Operation in June
- HDS: **SV guiding** improvement, **ADC**(orrection)  
Tests (Feb-May), Operation in June
- Operation GUI modifications, etc.

## ∞ Upgrade Items in FY2006

- **M1 Recoating works** (3 weeks) in **July/August 2006**
- Replace Local Control Units (design for TCMCU)
- Software for AO188 @NsIR
- PIR for FMOS (2006Q3), LLT (2006Q4)
- **Users' Comments**
  - ✧ AG (auto change threshold value, check FWHM, etc.)
  - ✧ Non-sidereal tracking (Auto guiding, easy pointing, etc.)
  - ✧ MIR (more stable diffraction limited image, etc.)



# Users comments are so important

- ⌘ Please continue letting us know your precious comments
- ⌘ Our response is too slow, but we are checking them and considering how to improve the system.